

## Top Stories This Week

- SEBI board approves norms for real estate investment trusts (REITs), infrastructure investment trusts (InvITs).
- SEBI expands framework for offer for sale (OFS). 10 percent of offer size to be reserved for retail investors.
- Preliminary CBI enquiry registered against IDBI Bank and Kingfisher Airlines (KFA).
- Tata Motors Q1 Consolidated Net Profit At Rs 5,398 Crore Versus Rs 1,726 Crore (YoY). Consolidated Revenue At Rs 64,683 Crore Versus Rs 46,796 Crore (YoY).
- June IIP data at 3.4 percent against 5 percent (MOM). July CPI inflation came in at 7.96 percent against 7.46 percent (MOM).
- ONGC net profit has surged by 19.07% at Rs 4781.79 crore as compared to Rs 4015.98 crore (YOY).
- Coal India net profit has declined by 66.14% at Rs 1202.02 crore as compared to Rs 3550.60 (YOY).
- BHEL Apr-Jun net profit fell 58.4% to Rs. 1.9 bn net sales fell 20.2% to to Rs. 50.7 bln (YOY).

## Weekly Indices Change

Index	Close	P. Close	Chg. (%)
SENSEX	26103	25313	3.12
NIFTY	7791	7568	2.95
MIDCAP	9007	8962	0.50
SMLCAP	9824	9828	-0.04
METAL	12775	12496	2.23
OIL&GAS	10854	10521	3.17
AUTO	16348	15544	5.17
TECK	5495	5465	0.55
BANKEKX	17251	16903	2.06
IT	9874	9730	1.48
FMCG	7265	7111	2.17
HC	12524	12092	3.57
PSU	7896	7804	1.18
CD	8648	8515	1.56
POWER	2061	2059	0.10
CG	14333	14159	1.23
REALTY	1808	1838	-1.63

## Global Indices

DOW	16662	16553	0.66
NASDAQ	4464	4370	2.15
FTSE	6689	6567	1.86
NIKKEI	15328	14778	3.72
HANGSENG	24666	24331	1.38

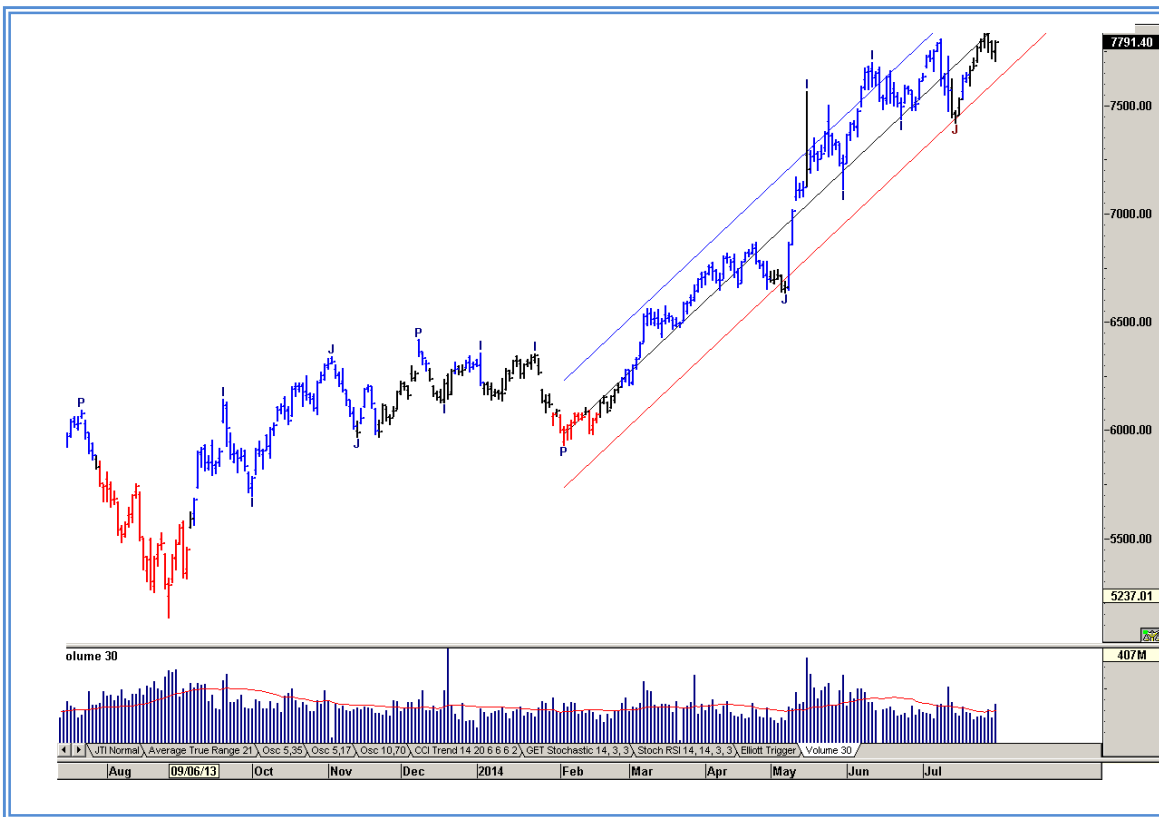
## Top Gainers Weekly

Scrip	Price	% Chg
Arvind Remedies	41.00	26.54
IFB Industries	234	21.41
Birla Corporation	532.55	20.80
Eicher Motors	10035	18.28
Bharat Rasayan	532.40	16.00

## Top Losers Weekly

Scrip	Price	% Chg
Bhushan Steel	160.50	26.83
Den Networks	151.55	22.74
BEML	559.15	13.45
Engineers India	248.25	9.25
Asian Hotels (North)	137.95	8.61

## Nifty Corner



<b>Support &amp; Resistance</b>						
S3	S2	S1	Nifty	R1	R2	R3
7500	7600	7650	7791	7850	7950	8100
<b>Moving Averages</b>						
20DMA		50DMA		100DMA		200DMA
7710		7640		7270		6750

## Market Commentary

Equity benchmarks closed with gain of around 1.75% during the week. IT and Pharma sectors seen good buying whereas Selling seen in the banking and realty stocks during the week. For the next week Nifty likely to trade in the range between 7950 - 8100 in the upper side and 7650 - 7500 in the lower side.

Stocks at 52 wk High

Scrip	Cmp
Bharat Forge	767
Blue Dart	4320.60
Britannia	1190.95
Dabur India	217.90
Emami	599.70

Stocks at 52 wk Low

Scrip	Cmp
Marico Kaya Ent	367.05
Wonderla	287.05
Eicher Motors	10024.90
J. K. Cement	484.70
IFB Industries	234.20

FII Activity

Date	Figures in crore
11/08	-162.92
12/08	370.83
13/08	718.27
14/08	625.18
15/08	-
Total	1551.36

DII Activity

Date	Figures in crore
11/08	234.41
12/08	-39.78
13/08	22.03
14/08	135.75
15/08	-
Total	352.41

Weekly Stock Idea

Scrip	B/S	Cmp	Tgt
CAIRN	B	318	335
ABIRLANUVO	B	1445	1515
EIDPARRY	B	189	198
BAYERCROP	B	2187	2350
ZANDUREALTY	B	1590	1730

Buy on dips & Sell on rise with Stop-loss of 3%

Volume Breakout Stocks

Scrip	Cmp
Shriram City	1622.65
Pfizer	1341.10
Dabur India	217.90
NALCO	56.60
Jindal Saw	77.35

Week Ahead**MAJOR RESULTS/AGM MEETING THIS WEEK:**

**AUG 19:** RANASUG, DLF, TINPLATE, MOTHERSUMI

**AUG 20:** BEML, ELECTCAST

**AUG 21:** SANGHIIND, BHARTIARTL, JUBILANT, BHARATFORG, DISHMAN, JUBLFOOD

**AUG 22:** CANDC, BALAJITELE, KIRLOSIND, MMFL

**VISIT US AT: [WWW.INDIRATRADE.COM](http://WWW.INDIRATRADE.COM)**

**Disclaimer**

This report is for private circulation within the Indira Group. This report is strictly confidential and for information of the selected recipient only and may not be altered in any way, transmitted to, copied or distributed, in part or in whole, to any other person or to the media or reproduced in any form. This report should not be construed as an offer or solicitation to buy or sell any securities or any interest in securities. It does not constitute a personal recommendation or take into account the particular investment objectives, financial situations, or any such factor. The information, opinions estimates and forecasts contained here have been obtained from, or are based upon, sources we believe to be reliable, but no representation of warranty, express or implied, is made by us to their accuracy or completeness. Opinions expressed are our current opinions as of the date appearing on this material only and are subject to change without notice.