

MONDAY



WEEKLY EQUITY REPORT

15 JULY 2019 TO 19 JULY 2019

**BULL
MARKET**



Indira Securities Pvt. Ltd.

www.indiratrade.com



TOP STORIES THIS WEEK

- June quarterly earnings and macroeconomic data will dictate market trend in the forthcoming week. Progress of monsoon, trend in global markets, the movement of rupee against the dollar and crude oil price movement, inflows from foreign portfolio investors (FPIs) and domestic institutional investors (DIIs) will also be closely watched.
- Shares of Infosys will on Monday, 15 July 2019 react to its results declared after market hours on Friday, 12 July 2019. Wipro and Yes Bank will declare their Q1 results on 17 July 2019.
- On the macro front, India's industrial production data for May 2019 and retail price inflation rate for June 2019 will be announced after market hours on Friday, 12 July 2019.
- Wholesale price inflation rate for June 2019 will be announced on Monday, 15 July 2019. Balance of Trade data for the month of June 2019 will also be announced on the same day.
- Overseas, China's second-quarter gross domestic product (GDP) data and industrial production data for June will be declared on Monday, 15 July 2019.
- The Finance Ministry will publish Japan's trade balance for June on Thursday, 18 July 2019. The Internal Affairs Ministry will publish data on Japan's core consumer inflation in June on Friday, 19 July 2019.
- On Wednesday, 17 July 2019, US Federal Reserve releases Beige — the anecdotal survey on the state of the economy.

WEEKLY INDICES

INDEX	CLOSE	PREV. CLOSE	CHANGE %
SENSEX	38736.23	39513.39	-1.97%
NIFTY	11552.5	11811.2	-2.19%
MIDCAP	14553.88	14725.65	-1.17%
SMLCAP	13776.58	14141.83	-2.58%
METAL	10540.26	10601.47	-0.58%
OIL&GAS	14088.55	14487.13	-2.75%
AUTO	17271.58	17692.26	-2.38%
TECK	7459.26	7528.37	-0.92%
BANKEX	34415.02	35340.51	-2.62%
IT	15102.18	15249.96	-0.97%
FMCG	11219.95	11505.35	-2.48%
HC	12923.39	12719.23	1.61%
PSU	7494.24	7763.68	-3.47%
CD	23190.84	25358.98	-8.55%
POWER	2019.72	2074.61	-2.65%
CG	18653.31	19675.59	-5.20%
REALTY	2163.68	2172.96	-0.43%

GLOBAL INDICES CHANGES

INDEX	CLOSE	PREV. CLOSE	CHANGE %
DOW	27332	26922.1	1.52%
NASDAQ	8,244.14	8,161.79	1.01%
FTSE	7505.97	7553.14	-0.62%
NIKKEI	21685.9	21746.4	-0.28%
HANGSENG	28441.5	28774.8	-1.16%

TOP GAINERS WEEKLY

SCRIPT	PRICE	CHANGE %
Reliance Com	1.89	16.67
Quess Corp	480.95	13.22
NLC India L	69.4	12.57
Sun Pharma.	407.7	11.06
Himachal F. Comm	21.7	11

TOP LOSERS WEEKLY

SCRIPT	PRICE	CHANGE %
GAIL (India) Ltd.	146.75	-51.41
Cox & Kings L	22.05	-18.18
Manpasand Beverage	35.15	-18.16
InterGlobe Aviation	1356.6	-13.61
Titan Company	1101.25	-12.09



1-Nifty 50 - 12/07/19

F7

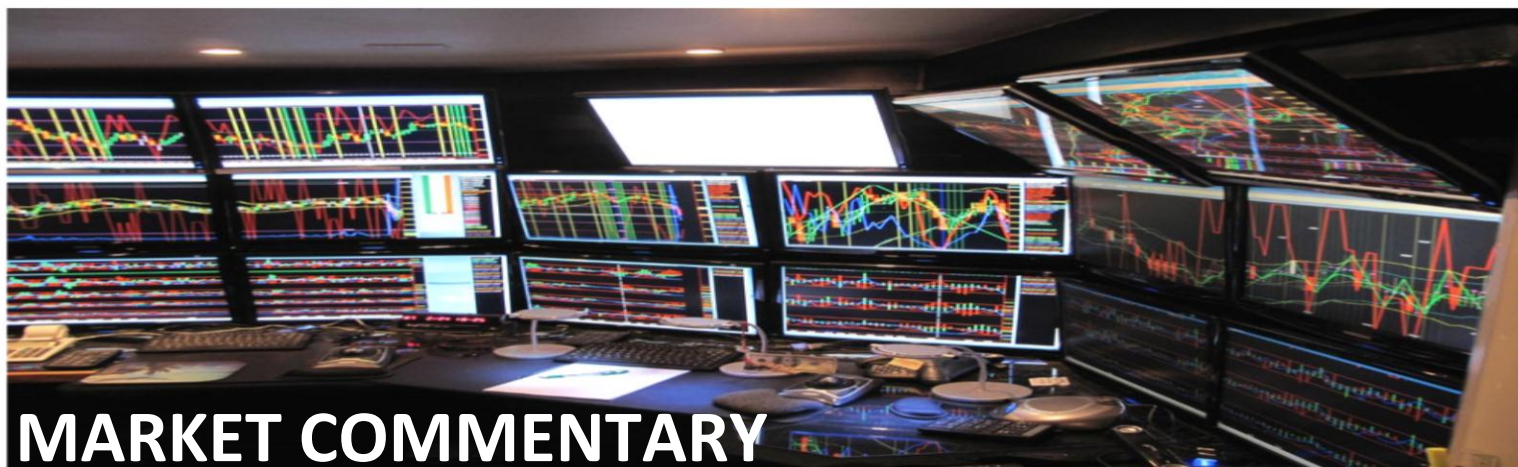


SUPPORT AND RESISTANCE

S3	S2	S1	Nifty	R1	R2	R3
11396	11523	11656	11783	11916	12043	12176

MOVING AVERAGE

MA20	MA50	MA100	MA200
11559	11167	10790	9606



In the week ended Friday, 12 July 2019, the Sensex fell 777.16 points or 1.97% to settle at 38,736.23. The Nifty 50 index fell 258.65 points or 2.19% to settle at 11,552.50. The BSE Mid-Cap index fell 171.77 points or 1.17% to settle at 14,553.88. The BSE Small-Cap index fell 365.25 points or 2.58% to settle at 13,776.58. Trading for the week began on a weak note as heavy selloff across all sectors dragged benchmark indices steeply lower on Monday, 8 July 2019. Weak global cues played the spoilsport. The Sensex slumped 792.82 points or 2.01% to settle at 38,720.57. The Nifty 50 index plunged 252.55 points or 2.14% to settle at 11,558.60.

Nifty likely to trade in the range between 11400-12200

STOCK AT 52 WEEK HIGH

SCRIPT	CMP
SBI Life Insuran	780.60
Metropolis Health.	1,067.45
Intellect Design	281.00
Vaibhav Global	870.70
Majesco	567.75

STOCK AT 52 WEEK LOW

SCRIPT	CMP
Godrej Consumer Prod	627.90
Glaxosmithkline Phar	1,151.65
Schaeffler India	4,470.55
Eris Lifesciences	453.35
Blue Dart Express	2,572.35

FII ACTIVITY

DATE	FIGURES IN CRORE
08/07	-401.99
09/07	-674.26
10/07	-604.94
11/07	-316.86
12/07	-850.11
NET	-2848

DII ACTIVITY

DATE	FIGURES IN CRORE
08/07	321.13
09/07	710.91
10/07	667.4
11/07	719.74
12/07	940.12
NET	+3359

WEEKLY STOCK IDEA

SCRIPT	B/S	CMP	TARGET
PVR	B	1760	1800
INTELLECT	B	281	295
SUNPHARMA	B	408	425
APOLLOHOSP	B	1365	1400
NIITECH	B	1348	1380

VOLUME BREAKOUT STOCKS

SCRIPT	CMP
GNA Axles	283.6
GTPL Hathway	77.75
Dharan Sugars & Chem	9.82
Goldstone Technology	10.63
Uttam Sugar Mills	125.6

Buy on dips & Sell on rise with Stop-loss of 3%



WOMEN Desk



204 Amardarshan Building 3rd floor Saket Nagar , Indore-452018

Call: 0731-4797170-173 Mob: +91-9303172345 / Toll Free: 18001030059 / SMS: <INDIRA> to 56070

DISCLAIMER

This report is for private circulation within the Indira Group. This report is strictly confidential and for information of the selected recipient only and may not be altered in any way, transmitted to, copied or distributed, in part or in whole, to any other person or to the media or reproduced in any form. This report should not be construed as an offer or solicitation to buy or sell any securities or any interest in securities. It does not constitute a personal recommendation or take into account the particular investment objectives, financial situations, or any such factor. The information, opinions estimates and forecasts contained here have been obtained from, or are based upon, sources we believe to be reliable, but no representation of warranty, express or implied, is made by us to their accuracy or completeness. Opinions expressed are our current opinions as of our current opinions as of the data appearing on this material only and are subject to change without notice.