

**BULL  
MARKET**



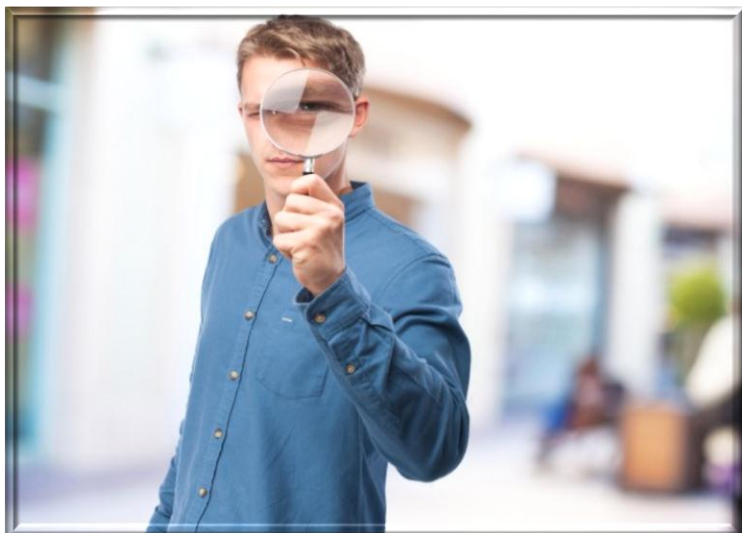
## **WEEKLY EQUITY REPORT**

18 SEP to 22 SEP 2017

Indira Securities Pvt. Ltd.

[www.indiratrade.com](http://www.indiratrade.com)

# Keep an Eye on Changing Market Place...



## TOP STORIES THIS WEEK

- On the macro front, the annual rate of inflation, based on monthly Wholesale Price Index (WPI), stood at 3.24% (provisional) for August 2017, compared with 1.88% (provisional) in July 2017 and 1.09% in August 2016. The data was announced during trading hours on Friday, 14 September 2017.
- In the week ended Friday, 15 September 2017, the Sensex rose 585.09 points or 1.85% to settle at 32,272.61. The Nifty 50 index rose 150.60 points or 1.52% to settle at 10,085.40.
- The S&P BSE Mid-Cap index advanced 217.99 points or 1.38% to settle at 15,972.74. The S&P BSE Small-Cap index gained 362.56 points or 2.22% to settle at 16,687.76.
- ICICI Bank fell 0.02%. The bank said that the Committee of Executive Directors of the bank at its meeting held yesterday, 12 September 2017 has approved the proposal for fund raising by way of issuance of Basel III compliant unsecured subordinated perpetual Additional Tier 1 Bonds. The announcement was made after market hours on Tuesday, 12 September 2017.
- The all-India general consumer price index (CPI)-based inflation accelerated to 3.36% in August 2017, compared with 2.36% in July 2017. The data was unveiled after market hours on Tuesday, 12 September 2017.
- Wipro lost 4.88% at Rs 285.75. The company announced that it has been awarded a 7-year contract by Innogy SE to manage their data center and cloud services. Innogy SE is an established European energy company.

## WEEKLY INDICES

INDEX	CLOSE	PREV. CLOSE	CHANGE %
SENSEX	32272.61	31687.52	1.85%
NIFTY	10085.40	9934.80	1.52%
MIDCAP	15972.74	15754.75	1.38%
SMLCAP	16687.76	16325.20	2.22%
METAL	13976.15	13956.79	0.14%
OIL&GAS	15229.77	15096.97	0.88%
AUTO	24483.27	24083.09	1.66%
TECK	5681.74	5610.66	1.27%
BANKEK	27977.88	27490.59	1.77%
IT	10070.10	9917.17	1.54%
FMCG	10136.25	10075.61	0.60%
HC	13763.32	13134.02	4.79%
PSU	8629.86	8578.14	0.60%
CD	18082.94	17998.34	0.47%
POWER	2288.76	2239.41	2.20%
CG	18157.94	17653.98	2.85%
REALTY	2190.20	2180.86	0.43%

## GLOBAL INDICES CHANGES

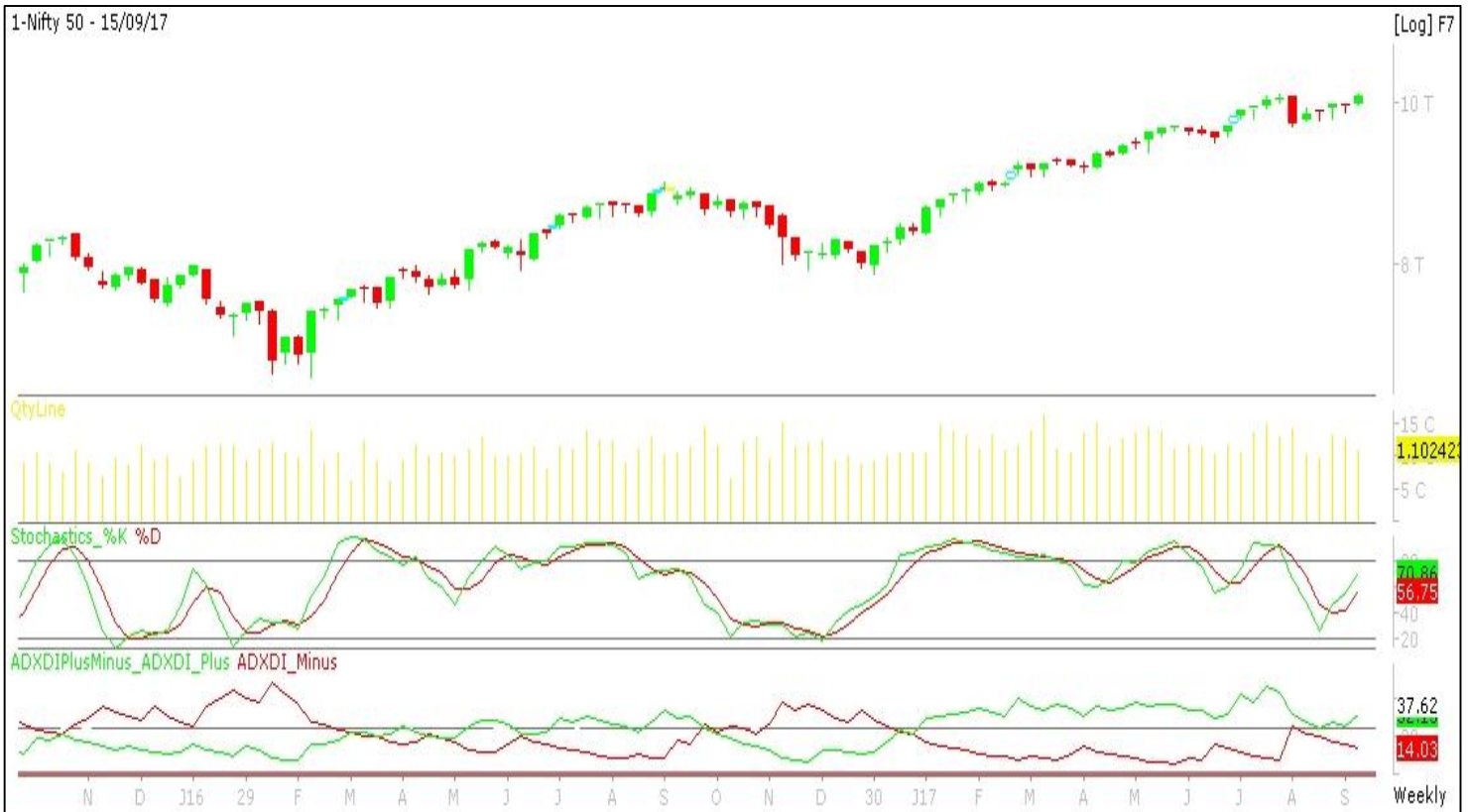
INDEX	CLOSE	PREV. CLOSE	CHANGE %
DOW	22268.34	21797.79	2.16%
NASDAQ	6448.47	6360.19	1.39%
FTSE	7215.47	7177.60	0.53%
NIKKEI	19909.50	19274.82	3.29%
HANGSENG	27807.59	27668.47	0.50%

## TOP GAINERS WEEKLY

SCRIPT	PRICE	CHANGE %
Divi's Lab	868.75	+22.87
Religare Enterprises	49.60	+22.77
Bombay Burmah	1237.80	+19.17
Andhra Bank	58.85	+15.85
Sun Pharma Advanced	419.20	+13.33

## TOP LOSERS WEEKLY

SCRIPT	PRICE	CHANGE %
Jaiprakash Associates	20.35	-12.85
Central Bank	91.45	-8.32
RelianceCommu.Ltd	20.50	-7.45
SREI Infrastructure	110.10	-6.10
Equitas Holdings Ltd	161.95	-5.93



### SUPPORT AND RESISTANCE

S3	S2	S1	Nifty	R1	R2	R3
9740	9800	9867	9928	9995	10055	10122

### MOVING AVERAGE

MA20	MA50	MA100	MA200
9733	9076	8535	8131



# MARKET COMMENTARY

Key benchmark indices settled near the flat line in what was a largely range-bound session of trade. The barometer index, the S&P BSE Sensex rose 30.68 points or 0.1% to settle at 32,272.61. The Nifty 50 index fell 1.20 points or 0.01% to settle at 10,085.40. Market sentiment was lackluster amid geopolitical tensions in the wake of North Korea's missile launch in the direction of the east of Japan.

The Sensex rose 30.68 points or 0.1% to settle at 32,272.61, its highest closing level since 7 August 2017. The index rose 114.18 points or 0.35% at the day's high of 32,356.11 in late trade. It fell 103.55 points or 0.32% at the day's low of 32,138.38 in morning trade.

For the next week Nifty likely to trade in the range between 9740-10122.

## STOCK AT 52 WEEK HIGH

SCRIPT	CMP
Apex Frozen	327.40
Avenue Supermar	1087.75
Bajaj Electric	389.60
BF Investment	221.00
Bombay Burmah	1236.65

## STOCK AT 52 WEEK LOW

SCRIPT	CMP
Alembic Pharma	486.00
Blue Blends	29.15
Advanced Enzyme	271.45
Allied Digital	21.80
Gammon Infra	3.10

## FII ACTIVITY

DATE	FIGURES IN CRORE
11/09	-392.52
12/09	-1230.74
13/09	-826.77
14/09	-1334.23
15/09	+418.86
<b>NET</b>	<b>-3365.4</b>

## DII ACTIVITY

DATE	FIGURES IN CRORE
11/09	+877.37
12/09	+1313.08
13/09	+725.90
14/09	+793.31
15/09	+125.55
<b>NET</b>	<b>3835.21</b>

## WEEKLY STOCK IDEA

SCRIPT	B/S	CMP	TARGET
BIOCON	B	348	360
HEXAWARE	B	278	290
ARVIND	B	413	430
DABUR	B	310	325
LUPIN	B	1009	1040

## VOLUME BREAKOUT STOCKS

SCRIPT	CMP
Kamdhenu	144.20
Andhra Bank	58.75
BF Investment	221.00
CL Educate	350.10
TVS Electronics	350.10

Buy on dips & Sell on rise with Stop-loss of 3%



# WOMEN Desk

‘Ramavat House’ E-15 Saket Nagar , Indore-452018

Call: 0731-4097170-173 Mob: +91-9303172345 / Toll Free: 18001030059 / SMS: <INDIRA> to 56070

## DISCLAIMER

This report is for private circulation within the Indira Group. This report is strictly confidential and for information of the selected recipient only and may not be altered in any way, transmitted to, copied or distributed, in part or in whole, to any other person or to the media or reproduced in any form. This report should not be construed as an offer or solicitation to buy or sell any securities or any interest in securities. It does not constitute a personal recommendation or take into account the particular investment objectives, financial situations, or any such factor. The information, opinions estimates and forecasts contained here have been obtained from, or are based upon, sources we believe to be reliable, but no representation of warranty, express or implied, is made by us to their accuracy or completeness. Opinions expressed are our current opinions as of our current opinions as of the data appearing on this material only and are subject to change without notice.