

MONDAY



WEEKLY EQUITY REPORT

10 JUNE 2019 TO 14 JUNE 2019

**BULL
MARKET**



Indira Securities Pvt. Ltd.

www.indiratrade.com



TOP STORIES THIS WEEK

- The market will focus on domestic macroeconomic data and the progress of monsoon next week. The southwest monsoon is likely to get delayed further and hit the Kerala coast on 8 June 2019, the weather office said. The India Meteorological Department (IMD) had earlier forecast monsoon onset over the mainland on 6 June, with rainfall seen at 96% of the 50-year long-term average (LPA) of 89 cm. The normal date of monsoon onset is 1 June.
- On the macro front, industrial production data for April 2019 will be unveiled on Wednesday, 12 June 2019. India's industrial production (base year 2011-12=100) declined 0.1% in March 2019, while snapping growth for last 21 straight months.
- India's inflation based on consumer price index (CPI) for May 2019 will be unveiled on Wednesday, 12 June 2019. The all-India general CPI inflation rose marginally to 2.92% in April 2019 (new base 2012=100), compared with 2.86% in March 2019.
- India's inflation based on wholesale price index (WPI) for May 2019 will be unveiled on Friday, 14 June 2019. WPI-based inflation, base year 2011-12, declined to 3.1% in April 2019 from 3.2% in March 2019, while snapping rise for last two straight months.
- Investors will keep a watch on inflows from foreign portfolio investors (FPIs) and domestic institutional investors (DIIs). The movement of rupee against the dollar and crude oil price movement will also be monitored.

WEEKLY INDICES

INDEX	CLOSE	PREV. CLOSE	CHANGE %
SENSEX	39615.9	39714.2	-0.25%
NIFTY	11870.7	11922.8	-0.44%
MIDCAP	14906.38	15096.18	-1.26%
SMLCAP	14657.09	14867.04	-1.41%
METAL	10778.6	10756.4	0.21%
OIL&GAS	15225.54	15734.43	-3.23%
AUTO	18490.22	18445.99	0.24%
TECK	7751.8	7767.07	-0.20%
BANKEKX	34866.11	35264.03	-1.13%
IT	15738.57	15781.62	-0.27%
FMCG	11531.67	11518.09	0.12%
HC	13038.91	13305.06	-2.00%
PSU	7684.6	7825.82	-1.80%
CD	25269.44	24700.46	2.30%
POWER	1995.29	2010.12	-0.74%
CG	19552.77	19939.33	-1.94%
REALTY	2162.42	2200.74	-1.74%

GLOBAL INDICES CHANGES

INDEX	CLOSE	PREV. CLOSE	CHANGE %
DOW	25983.9	24815	4.71%
NASDAQ	7,742.10	7453.15	3.88%
FTSE	7331.94	7161.71	2.38%
NIKKEI	21113.5	20354	3.73%
HANGSENG	27526.5	26741.5	2.94%

TOP GAINERS WEEKLY

SCRIPT	PRICE	CHANGE %
Heritage Foods	420.15	7.41
Himadri Speciality	110.15	6.27
Guj. Fluorochemi	1111.45	5.46
Tata Global Beverage	256.4	4.89
Power Finance Co	134.15	4.8

TOP LOSERS WEEKLY

SCRIPT	PRICE	CHANGE %
Dewan Housing	83.5	-26.24
Reliance Infrastruct	74	-25.25
Reliance Capital	100.05	-17.11
PC Jeweller L	62.4	-16.97
Reliance Power L	6.17	-15.71



1-Nifty 50 - 07/06/19

F7

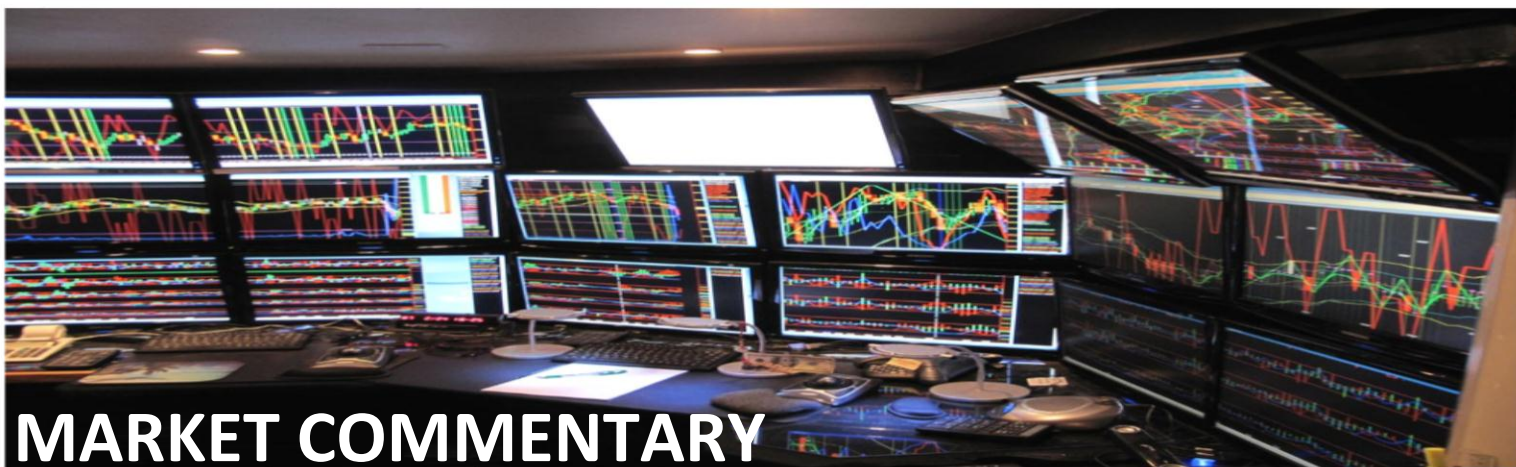


SUPPORT AND RESISTANCE

S3	S2	S1	Nifty	R1	R2	R3
11583	11697	11810	11924	12037	12151	12264

MOVING AVERAGE

MA20	MA50	MA100	MA200
11369	11095	10717	9532



The market tumbled last week after the forecast of a delay in the onset of the southwest monsoon and concerns over global trade tensions triggered selling pressure. Investors booked profits after the Reserve Bank of India cut repo rate by 25 basis points to lowest in nine years.

In the week ended Friday, 7 June 2019, the Sensex fell 98.30 points or 0.25% to settle at 39,615.90. The Nifty 50 index fell 52.15 points or 0.44% to settle at 11,870.65.

The BSE Mid-Cap index fell 189.80 points or 1.26% to settle at 14,906.38. The BSE Small-Cap index fell 209.95 points or 1.41% to settle at 14,657.09.

Nifty likely to trade in the range between 11500-12250

STOCK AT 52 WEEK HIGH

SCRIPT	CMP
Havells India	787.85
Apollo Hospital Ent.	1,397.05
Astral Poly Technik	1,331.70
Guj. Fluorochem	1,111.45
Chambal Fert & Chem	190.95

STOCK AT 52 WEEK LOW

SCRIPT	CMP
Hindustan Zinc	239.65
Lupin	729.80
Oracle Finl. Service	3,273.50
New India Assurance	161.60
Cadila Healthcare	242.70

FII ACTIVITY

DATE	FIGURES IN CRORE
03/06	3,068.88
04/06	-416.08
05/06	0.00
06/06	-1,448.99
07/06	724.97
NET	+1929

DII ACTIVITY

DATE	FIGURES IN CRORE
03/06	-462.69
04/06	-355.42
05/06	0
06/06	-650.84
07/06	179.79
NET	-1289

WEEKLY STOCK IDEA

SCRIPT	B/S	CMP	TARGET
DCBBANK	B	240	260
MAS FINAN	B	603	640
HDFCLIFE	B	451	480
VOLTAS	B	615	640
CHAMBEL FERT	B	191	202

VOLUME BREAKOUT STOCKS

SCRIPT	CMP
Guj. Fluorochem	1111.45
Voltas	617.2
Dishman Carbogen Amc	245.6
Lakshmi Vilas Bank	73.3
Himatsingka Seide	175.45

Buy on dips & Sell on rise with Stop-loss of 3%



WOMEN
Desk

204 Amardarshan Building 3rd floor Saket Nagar , Indore-452018

Call: 0731-4797170-173 Mob: +91-9303172345 / Toll Free: 18001030059 / SMS: <INDIRA> to 56070

DISCLAIMER

This report is for private circulation within the Indira Group. This report is strictly confidential and for information of the selected recipient only and may not be altered in any way, transmitted to, copied or distributed, in part or in whole, to any other person or to the media or reproduced in any form. This report should not be construed as an offer or solicitation to buy or sell any securities or any interest in securities. It does not constitute a personal recommendation or take into account the particular investment objectives, financial situations, or any such factor. The information, opinions estimates and forecasts contained here have been obtained from, or are based upon, sources we believe to be reliable, but no representation of warranty, express or implied, is made by us to their accuracy or completeness. Opinions expressed are our current opinions as of our current opinions as of the data appearing on this material only and are subject to change without notice.