

MONDAY



WEEKLY EQUITY REPORT

23 DEC 2019 TO 27 DEC 2019

**BULL
MARKET**



Indira Securities Pvt. Ltd.

www.indiratrade.com



TOP STORIES THIS WEEK

- Global cues, macroeconomic data, movement of rupee against the dollar, Brent crude oil price movement and investments by foreign portfolio investors (FPI) and domestic institutional investors (DII) will be watched in the truncated week ahead. Domestic stock markets will remain closed on Wednesday, 25 December 2019 on account of Christmas.
- Trading could be volatile next week as traders roll over positions in the F&O segment from the near month December 2019 series to January 2020 series. The December 2019 F110 contracts expire on Thursday, 26 December 2019.
- On the political front, Legislative Assembly election results for Jharkhand will be declared on 23 December 2019.
- Overseas, Bank of Japan will release its Monetary Policy Meeting Minutes on Tuesday, 24 December 2019.
- The US will announce Durable Goods Orders (MoM) for November 2019 on Thursday, 24 December 2019.

WEEKLY INDICES

INDEX	CLOSE	PREV. CLOSE	CHANGE %
S&P BSE Sensex	41645.18	41009.71	1.55%
NSE NIFTY	12263.3	12086.7	1.46%
MIDCAP	14875.42	14830.4	0.30%
SMLCAP	13410.6	13332.66	0.58%
METAL	10191.93	9788.75	4.12%
OIL&GAS	14885.65	14878.67	0.05%
AUTO	18211.41	18087.73	0.68%
TECK	7804.8	7463.76	4.57%
BANKEK	36894.57	36496.3	1.09%
IT	15713.32	15005.82	4.71%
FMCG	11532.76	11513.41	0.17%
HC	13407.66	13376.12	0.24%
PSU	6909.92	6878.34	0.46%
CD	25183.71	25070.51	0.45%
POWER	1899.54	1888.87	0.56%
CG	17075.92	17006.4	0.41%
REALTY	2244.6	2203.57	1.86%

GLOBAL INDICES CHANGES

INDEX	CLOSE	PREV. CLOSE	CHANGE %
DOW 30	28455.1	28135.4	0.30%
NASDAQ 100	8,924.96	8,734.88	0.80%
FTSE 100	7582.48	7353.44	0.09%
NIKKEI 225	23837.5	24023.1	3.13%
HANG SENG	27901	27687.8	5.09%

TOP GAINERS WEEKLY

SCRIPT	PRICE	CHANGE %
KRBL Ltd.	277.9	28.45
Jamna Auto Inds.	46.5	16.69
Jindal St & Pwr	157.9	15.47
Time Technoplast Ltd	53.7	12.23
Essel Propack Ltd.	169.5	12.03

TOP LOSERS WEEKLY

SCRIPT	PRICE	CHANGE %
Dishman Carbogen Amc	102.05	-19.01
PC Jeweller L	23.8	-13.92
Trident Ltd.	7.15	-13.86
ABB India	1284	-13.23
CG Power and Indust	10.75	-10.34

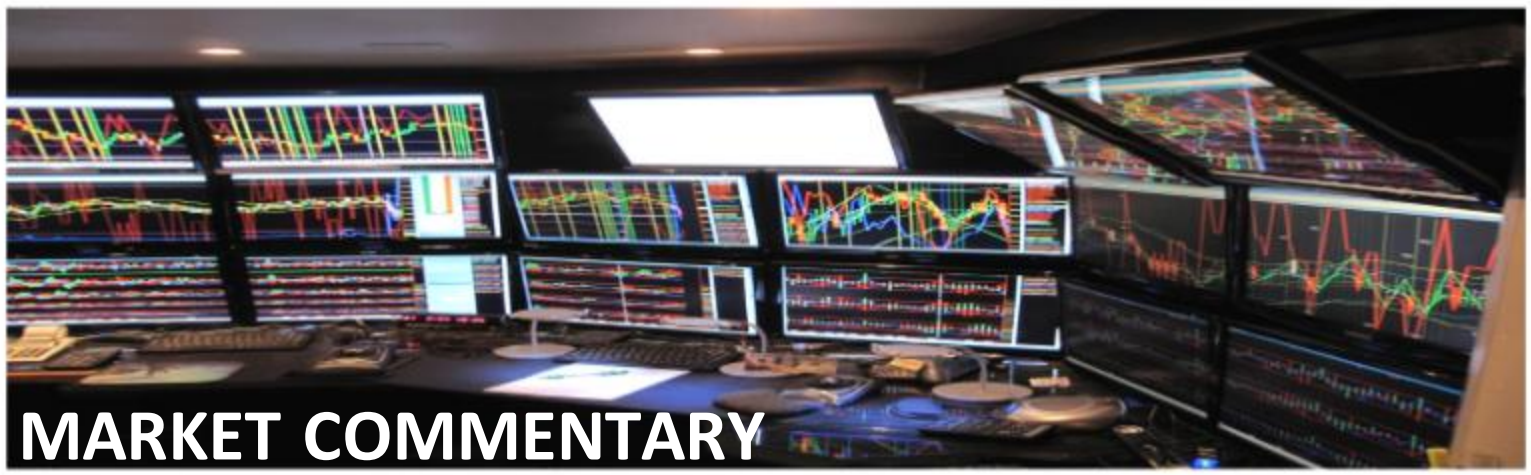


SUPPORT AND RESISTANCE

S3	S2	S1	Nifty	R1	R2	R3
11866	11956	11842	12204	12361	12451	12609

MOVING AVERAGE

MA20	MA50	MA100	MA200
11582	11469	11108	10189



In the week ended on Friday, 20 December 2019, the Sensex jumped 671.83 points or 1.64% to settle at 41,681.54, its record closing high. The Nifty 50 index advanced 185.10 points or 1.53% to settle at 12,271.80, its record closing high. The BSE Mid-Cap index gained 5.57 or 0.04% to settle at 14,835.97. The BSE Small-Cap index rose 58.37 points or 0.44% to settle at 13,391.03.

Domestic equity market corrected on Monday, 16 December 2019 amid profit booking. The barometer index, the BSE Sensex, fell 70.99 points or 0.17% to 40,938.72. The Nifty 50 index slipped 26 points or 0.22% to 12,060.70.

Nifty likely to trade in the range between 12080-12450

STOCK AT 52 WEEK HIGH

SCRIPT	CMP
DLF	231.75
NMDC	125.20
Muthoot Finance	746.60
Relaxo Footwears	628.10
CRISIL	1,829.15

STOCK AT 52 WEEK LOW

SCRIPT	CMP
GNFC	167.70
Dishman Carbogen Amc	102.10
Majesco	372.15
Tata Teleservice(Mah)	2.30
Shriram EPC	4.77

FII ACTIVITY

DATE	FIGURES IN CRORE
16/12	728.13
17/12	1248.47
18/12	1,836.81
19/12	739.43
20/12	338.86
NET	4892

DII ACTIVITY

DATE	FIGURES IN CRORE
16/12	-796.38
17/12	-908.16
18/12	-1267.57
19/12	-493.95
20/12	-285.41
NET	-3751

WEEKLY STOCK IDEA

SCRIPT	B/S	CMP	TARGET
ABFRL	B	234	242
SRF	B	3326	3456
Relaxo	B	621	645
Gmpfaudlr	B	1759	1832
Muthoot fin	B	732	758

VOLUME BREAKOUT STOCKS

SCRIPT	CMP
Reliance Infra	24.25
BASF India	1001.35
Sadbhav Engineering	115.5
Reliance Capital	12.65
Delta Corp	216.2

Buy on dips & Sell on rise with Stop-loss of 3%



WOMEN
Desk

204 Amardarshan Building 3rd floor Saket Nagar , Indore-452018

Call: 0731-4797170-71-72

To get regular updates please whatsapp us on Mob. +91 9300059777

DISCLAIMER

This report is for private circulation within the Indira Group. This report is strictly confidential and for information of the selected recipient only and may not be altered in any way, transmitted to, copied or distributed, in part or in whole, to any other person or to the media or reproduced in any form. This report should not be construed as an offer or solicitation to buy or sell any securities or any interest in securities. It does not constitute a personal recommendation or take into account the particular investment objectives, financial situations, or any such factor. The information, opinions estimates and forecasts contained here have been obtained from, or are based upon, sources we believe to be reliable, but no representation of warranty, express or implied, is made by us to their accuracy or completeness. Opinions expressed are our current opinions as of our current opinions as of the data appearing on this material only and are subject to change without notice.