

MONDAY



WEEKLY EQUITY REPORT

18 FEB 2019 TO 22 FEB 2019

**BULL
MARKET**



Indira Securities Pvt. Ltd.

www.indiratrade.com



TOP STORIES THIS WEEK

- On the global front, the UK Claimant Count Change data for January, which presents the number of unemployed people in the UK, will be unveiled on Tuesday, 19 February 2019. The number of people claiming for unemployment benefits in the United Kingdom increased by 20.8 thousand in December of 2018, following an upwardly revised 24.8 thousand rise in November.
- Japan balance of trade data for January will be unveiled on Wednesday, 20 February 2019. Japan logged a trade deficit of JPY 55.3 billion in December 2018, compared with a surplus of JPY 356.2 billion a year earlier.
- US durable goods orders data for December will be declared on Thursday, 21 February 2019. New orders for US manufactured durable goods surged 0.8% from a month earlier in November 2018, following a downwardly revised 4.3% plunge in October.
- Among corporate news, Ambuja Cements is scheduled to announce October-December 2018 quarterly earnings on Monday, 18 February 2018
- Global macroeconomic data, trend in global markets, investment by foreign portfolio investors (FPIs) and domestic institutional investors (DIIs), the movement of rupee against the dollar and crude oil price movement will dictate the trend on the bourses in the near term

WEEKLY INDICES

INDEX	CLOSE	PREV. CLOSE	CHANGE %
SENSEX	35808.95	36546.48	-2.02%
NIFTY	10724.4	10943.6	-2.00%
MIDCAP	13940.54	14328.81	-2.71%
SMLCAP	13252.81	13656.75	-2.96%
METAL	10014.34	10266.29	-2.45%
OIL&GAS	13073.34	13649.17	-4.22%
AUTO	18262.97	18943.57	-3.59%
TECK	7601.07	7711.53	-1.43%
BANKEX	29972.02	30546.58	-1.88%
IT	15378.44	15624.07	-1.57%
FMCG	11358.81	11582.21	-1.93%
HC	13432.98	13982.94	-3.93%
PSU	6437.14	6678.97	-3.62%
CD	21092	21654.96	-2.60%
POWER	1784.93	1781.58	0.19%
CG	16411.23	16846.83	-2.59%
REALTY	1740.22	1768.66	-1.61%

GLOBAL INDICES CHANGES

INDEX	CLOSE	PREV. CLOSE	CHANGE %
DOW	25883.2	24737.2	4.63%
NASDAQ	7472.41	7164.86	4.29%
FTSE	7236.68	6809.22	6.28%
NIKKEI	21289.5	20686.5	2.91%
HANGSENG	28405	27708.5	2.51%

TOP GAINERS WEEKLY

SCRIPT	PRICE	CHANGE %
YES Bank Ltd.	218.7	26.6
Dilip Buildcon Ltd.	445.1	25.57
Redington (India) Lt	82.15	23.81
Infibeam Avenues	39.5	21.54
Shankara Building Pr	425.4	21.53

TOP LOSERS WEEKLY

SCRIPT	PRICE	CHANGE %
Gujarat Narmada Vall	250.5	-18.72
Indo Count Inds.	32	-17.1
Uflex Ltd.	202.05	-15.5
CG Power and Indust	29.3	-14.58
Natco Pharma	594.4	-11.5

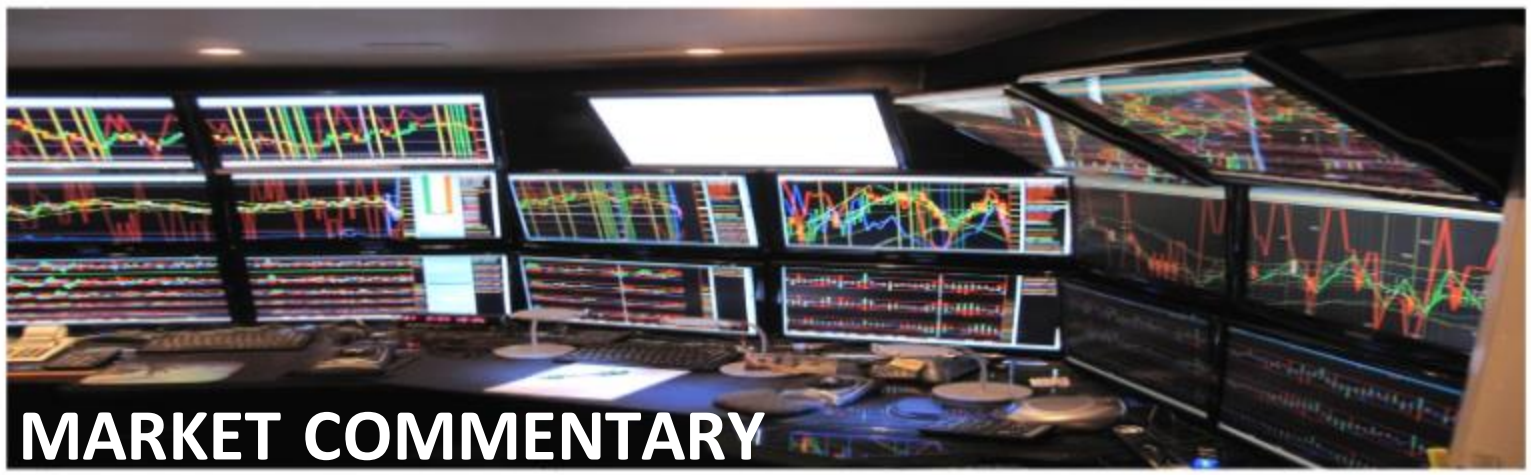


SUPPORT AND RESISTANCE

S3	S2	S1	Nifty	R1	R2	R3
10495	10654	10799	10958	11103	11263	11408

MOVING AVERAGE

MA20	MA50	MA100	MA200
10661	10780	10381	9280



In the week ended Friday, 15 February 2019, the Sensex fell 737.53 points or 2.02% to settle at 35,808.95. The Nifty 50 index fell 219.20 points or 2% to settle at 10,724.40.

The BSE Mid-Cap index fell 388.27 points or 2.71% to settle at 13,940.54. The BSE Small-Cap index fell 403.94 points or 2.96% to settle at 13,252.81.

Nifty likely to trade in the range between 10500-11400

STOCK AT 52 WEEK HIGH

SCRIPT	CMP
Aditya Birla Fashion	217.45
Balrampur Chini Mill	117.55
Xelpmoc Design	90.85

STOCK AT 52 WEEK LOW

SCRIPT	CMP
M&M	627.80
Vedanta	147.45
Grasim Industries	706.55
Hindalco	186.50
Cadila Healthcare	314.35

FII ACTIVITY

DATE	FIGURES IN CRORE
11/02	-125
12/02	-467
13/02	-677
14/02	-250
15/02	-966
NET	-2485.12

DII ACTIVITY

DATE	FIGURES IN CRORE
11/02	-233
12/02	-123
13/02	713
14/02	1225
15/02	853
NET	+2436.4

WEEKLY STOCK IDEA

SCRIPT	B/S	CMP	TARGET
A.B. FASHION	B	218	232
DBL	B	450	490
PFC	B	103	111
REDINGTON	B	82	88
TECHM B	B	800	830

VOLUME BREAKOUT STOCKS

SCRIPT	CMP
BAG Films & Media	4.95
Pitti Engineering	55.3
Infibeam Avenues	39.5
Pressman Advertising	26.4
Redington	82.15

Buy on dips & Sell on rise with Stop-loss of 3%



WOMEN Desk



204 Amardarshan Building 3rd floor Saket Nagar , Indore-452018

Call: 0731-4797170-173 **Mob:** +91-9303172345 / **Toll Free:** 18001030059 / **SMS:** <INDIRA> to 56070

DISCLAIMER

This report is for private circulation within the Indira Group. This report is strictly confidential and for information of the selected recipient only and may not be altered in any way, transmitted to, copied or distributed, in part or in whole, to any other person or to the media or reproduced in any form. This report should not be construed as an offer or solicitation to buy or sell any securities or any interest in securities. It does not constitute a personal recommendation or take into account the particular investment objectives, financial situations, or any such factor. The information, opinions estimates and forecasts contained here have been obtained from, or are based upon, sources we believe to be reliable, but no representation of warranty, express or implied, is made by us to their accuracy or completeness. Opinions expressed are our current opinions as of our current opinions as of the data appearing on this material only and are subject to change without notice.