

MONDAY



WEEKLY EQUITY REPORT

04 FEB 2019 TO 08 FEB 2019

**BULL
MARKET**



Indira Securities Pvt. Ltd.

www.indiratrade.com



TOP STORIES THIS WEEK

- The outcome of the Reserve Bank of India's (RBI) monetary policy meeting, domestic macroeconomic data, trend in global markets, the movement of rupee against the dollar and crude oil price movement will dictate trend on the bourses in the near term. Investment by foreign portfolio investors (FPIs) and domestic institutional investors (DIIs) will also be monitored.
- RBI's Monetary Policy Committee (MPC) meeting is scheduled from 5 to 7 February 2019 for sixth bi-monthly monetary policy for 2018-19. The resolution of the MPC will be announced on 7 February 2019.
- On the global front, US ISM Non-Manufacturing PMI data for January will be unveiled on Tuesday, 5 February 2019. The ISM Non-Manufacturing PMI index for the United States was revised higher to 58 in December of 2018 from a preliminary of 57.6.
- In the previous meeting, MPC kept the policy repo rate under the liquidity adjustment facility (LAF) unchanged at 6.5%. Consequently, the reverse repo rate under the LAF remained at 6.25%, and the marginal standing facility (MSF) rate and the Bank Rate at 6.75%.
- Nikkei India Services PMI data for January will be announced on Tuesday, 5 February 2019. The Nikkei India Services PMI dropped to 53.2 in December of 2018 from November's 4-month high of 53.7

WEEKLY INDICES

INDEX	CLOSE	PREV. CLOSE	CHANGE %
SENSEX	36469.43	36025.54	1.23%
NIFTY	10893.7	10780.5	1.05%
MIDCAP	14641.38	14681.82	-0.28%
SMLCAP	13950.45	14000.2	-0.36%
METAL	10542.63	10735.51	-1.80%
OIL&GAS	13633.78	13765	-0.95%
AUTO	18985.17	18624.17	1.94%
TECK	7585.37	7274.38	4.28%
BANKEX	30412.15	30377.47	0.11%
IT	15433.98	14784.37	4.39%
FMCG	11748.28	11657.36	0.78%
HC	13997.3	13948.31	0.35%
PSU	6846.55	6857.05	-0.15%
CD	21412.99	20951.27	2.20%
POWER	1887.82	1883.29	0.24%
CG	17462.98	17174.33	1.68%
REALTY	1797.76	1790.41	0.41%

GLOBAL INDICES CHANGES

INDEX	CLOSE	PREV. CLOSE	CHANGE %
DOW	25063.9	24737.2	1.32%
NASDAQ	7263.87	7164.86	1.38%
FTSE	7020.22	6809.22	3.10%
NIKKEI	20788.4	20686.5	0.49%
HANGSENG	27930.7	27708.5	0.80%

TOP GAINERS WEEKLY

SCRIPT	PRICE	CHANGE %
Jubilant Foodworks L	1354.85	13.13
Zee Entertainment En	356.5	11.63
Gateway Distriparks	108.2	10.75
Persistent Systems	619	10.2
Centrum Capital	36.25	9.68

TOP LOSERS WEEKLY

SCRIPT	PRICE	CHANGE %
Dewan Housing	111.45	-46.73
Sterlite Technologie	222.55	-21.42
IL&FS Transportation	7.2	-20.79
Linde India	457.85	-19.62
Vedanta	162.3	-16.75

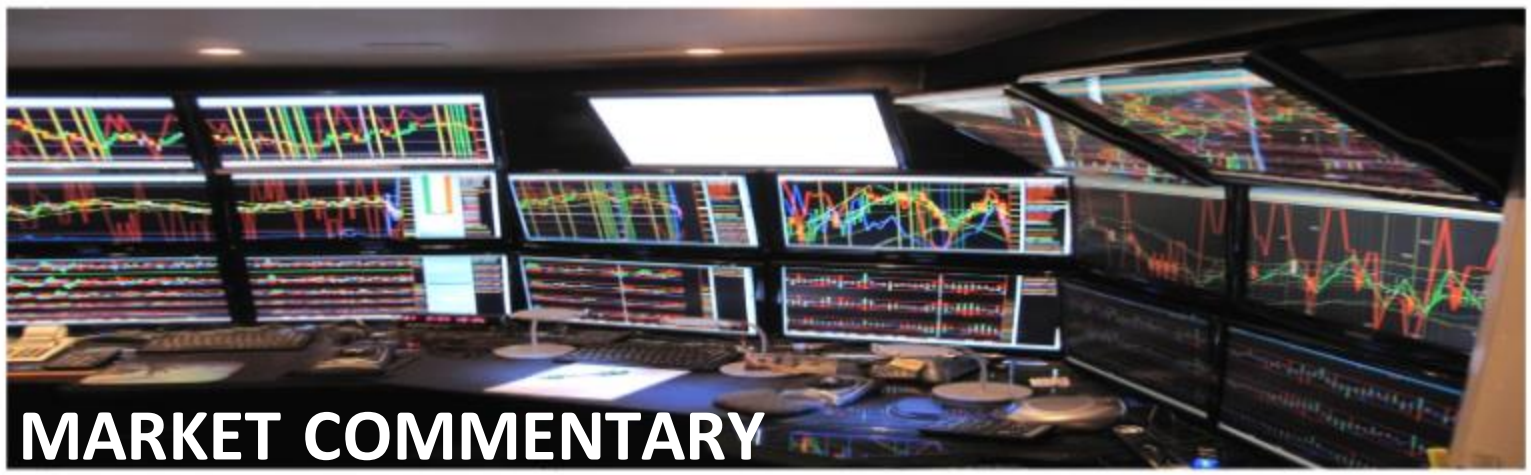


SUPPORT AND RESISTANCE

S3	S2	S1	Nifty	R1	R2	R3
10464	10610	10695	10840	10926	11072	11157

MOVING AVERAGE

MA20	MA50	MA100	MA200
10681	10766	10345	9259



In the week ended Friday, 1 February 2019, the Sensex rose 443.89 points or 1.23% to settle at 36,469.43. The Nifty 50 index rose 113.10 points or 1.05% to settle at 10,893.65.

The BSE Mid-Cap index fell 40.44 points or 0.28% to settle at 14,641.38. The BSE Small-Cap index fell 49.75 points or 0.36% to settle at 13,950.45.

Nifty likely to trade in the range between 10460-11160

STOCK AT 52 WEEK HIGH

SCRIPT	CMP
Infosys	756.55
Wipro	371.35
Dr. Reddys Labs	2,786.90
Havells India	736.40
UPL	777.55

STOCK AT 52 WEEK LOW

SCRIPT	CMP
Hindustan Zinc	255.15
Vedanta	162.30
Grasim Industries	720.70
Motherson Sumi	139.10
ICICI Prudential	286.60

FII ACTIVITY

DATE	FIGURES IN CRORE
28/01	223
29/01	-354
30/01	130
31/01	3006
01/02	1316
NET	+4321

DII ACTIVITY

DATE	FIGURES IN CRORE
28/01	92
29/01	81
30/01	502
31/01	-1634
01/02	-5
NET	-964

WEEKLY STOCK IDEA

SCRIPT	B/S	CMP	TARGET
WIPRO	B	372	395
TECHM	B	748	770
JUBLFOOD	B	1355	1405
INFOSYS	B	757	790
RELIANCE	B	1248	1301

VOLUME BREAKOUT STOCKS

SCRIPT	CMP
KRBL Ltd.	360.05
Jet Airways (India)	255.9
Jubilant FoodWorks	1354.85
Hero MotoCorp	2807.35
Sadbhav Infra	90.55

Buy on dips & Sell on rise with Stop-loss of 3%



WOMEN
Desk

204 Amardarshan Building 3rd floor Saket Nagar , Indore-452018

Call: 0731-4797170-173 Mob: +91-9303172345 / Toll Free: 18001030059 / SMS: <INDIRA> to 56070

DISCLAIMER

This report is for private circulation within the Indira Group. This report is strictly confidential and for information of the selected recipient only and may not be altered in any way, transmitted to, copied or distributed, in part or in whole, to any other person or to the media or reproduced in any form. This report should not be construed as an offer or solicitation to buy or sell any securities or any interest in securities. It does not constitute a personal recommendation or take into account the particular investment objectives, financial situations, or any such factor. The information, opinions estimates and forecasts contained here have been obtained from, or are based upon, sources we believe to be reliable, but no representation of warranty, express or implied, is made by us to their accuracy or completeness. Opinions expressed are our current opinions as of our current opinions as of the data appearing on this material only and are subject to change without notice.