

MONDAY



WEEKLY EQUITY REPORT

24 DEC TO 28 DEC 2018

**BULL
MARKET**



Indira Securities Pvt. Ltd.

www.indiratrade.com

Keep an Eye on Changing Market Place...



TOP STORIES THIS WEEK

- In global market, United States S&P Case-Shiller Home Price Index data for October will be declared on Wednesday, 26 December 2018. The index rose 5.1% from a year earlier in September 2018, following a 5.5% advance in August.
- Trading could be volatile next week as traders roll over positions in the F&O segment from the near month December 2018 series to January 2019 series. The December 2018 F&O contracts expire on Thursday, 27 December 2018
- In absence of any major events, trend in global markets, the movement of rupee against the dollar and crude oil price movement will dictate trend on the bourses in the near term. Investment by foreign portfolio investors (FPIs) and domestic institutional investors (DIIs) will also be monitored.
- United States new home sales data for November 2018 will be declared on Thursday, 27 December 2018. Sales of new single-family houses in the United States slumped 8.9% from the previous month to a seasonally adjusted annual rate of 544 thousand in October 2018, following an upwardly revised 1% growth in September.
- Japan unemployment data for November 2018 will be declared on Friday, 28 December 2018. The unemployment rate in Japan edged up to 2.4% in October of 2018 from a 4-month low of 2.3% in the previous month.

WEEKLY INDICES

INDEX	CLOSE	PREV. CLOSE	CHANGE %
SENSEX	35742.07	35962.93	-0.61%
NIFTY	10754	10805.5	-0.48%
MIDCAP	15253	15192.84	0.40%
SMLCAP	14633.62	14501.76	0.91%
METAL	11831.79	11634.58	1.70%
OIL&GAS	13654.76	13412.01	1.81%
AUTO	21006.03	20882.29	0.59%
TECK	6956.39	7314.95	-4.90%
BANKEX	30023.63	30003.15	0.07%
IT	13893.8	14663.55	-5.25%
FMCG	11713.09	11774.18	-0.52%
HC	13763.77	13742.69	0.15%
PSU	7166.43	6967.31	2.86%
CD	20413.65	20929.91	-2.47%
POWER	1986.95	1935.96	2.63%
CG	18600.84	18500.56	0.54%
REALTY	1851.93	1838.31	0.74%

GLOBAL INDICES CHANGES

INDEX	CLOSE	PREV. CLOSE	CHANGE %
DOW	22445.4	24100.5	-6.87%
NASDAQ	6333	6910.67	-8.36%
FTSE	6721.17	6845.17	-1.81%
NIKKEI	20166.2	21531.5	-6.34%
HANGSENG	25501.5	26132.5	-2.41%

TOP GAINERS WEEKLY

SCRIPT	PRICE	CHANGE %
Navkar Corporation L	61.95	37.67
Sharda Cropchem	322.3	21.65
IL&FS Transportation	13.3	20.91
Vakrangee	38.2	17.18
Central Bank	35.55	15.05

TOP LOSERS WEEKLY

SCRIPT	PRICE	CHANGE %
Zee Entertainment En	447.3	-11.01
Reliance Naval	14.2	-10.01
Reliance Com	14.19	-9.39
Infosys	645.75	-6.89
APL Apollo Tubes	1171.5	-6.71

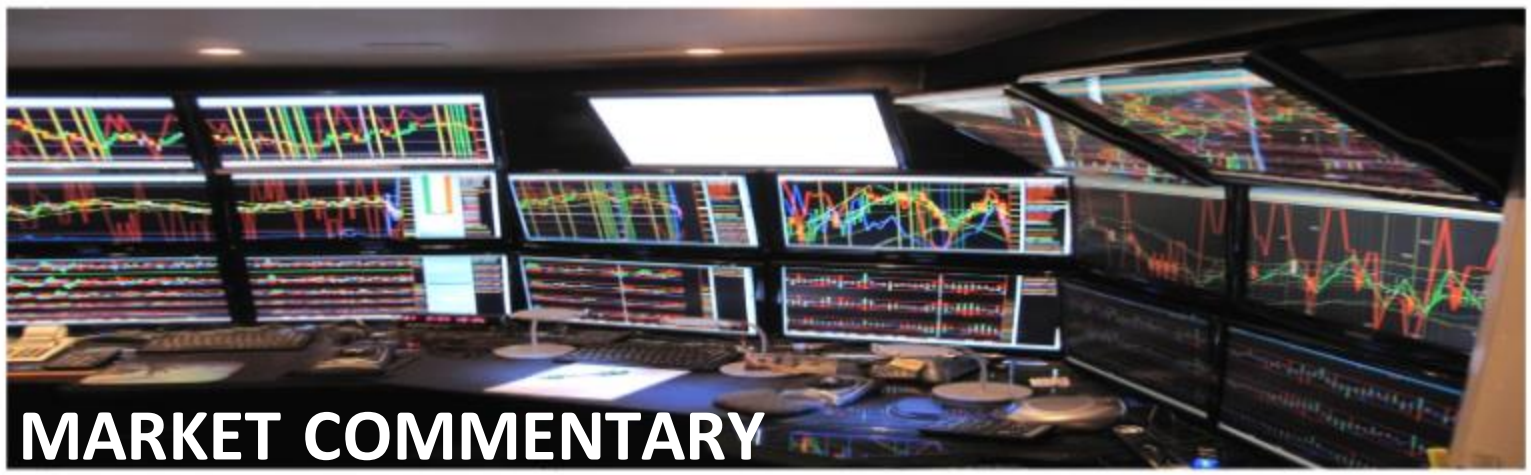


SUPPORT AND RESISTANCE

S3	S2	S1	Nifty	R1	R2	R3
9975	10155	10480	10660	10985	11165	11490

MOVING AVERAGE

MA20	MA50	MA100	MA200
10895	10753	10224	9193



In the week ended Friday, 21 December 2018, the Sensex fell 220.86 points or 0.61% to settle at 35,742.07. The Nifty 50 index fell 51.45 points or 0.48% to settle at 10,754.

The BSE Mid-Cap index rose 60.16 points or 0.40% to settle at 15,253. The BSE Small -Cap index rose 131.86 points or 0.91% to settle at 14,633.62.

Nifty likely to trade in the range between 10000-11500

STOCK AT 52 WEEK HIGH

SCRIPT	CMP
Bata India	1,116.15
PVR	1,562.40
Next Mediaworks	24.25
Commercial Engineers	27.15
Proseed India	0.76

STOCK AT 52 WEEK LOW

SCRIPT	CMP
General Insuranc	269.45
New India Assurance	187.20
Khadim India	530.45
Hindustan Media Vent	128.00
Ramco Systems	277.55

FII ACTIVITY

DATE	FIGURES IN CRORE
17/12	-61
18/12	145
19/12	1209
20/12	-386
21/12	134
NET	+1041

DII ACTIVITY

DATE	FIGURES IN CRORE
17/12	-77
18/12	-183
19/12	-481
20/12	-88
21/12	-488
NET	-1317

WEEKLY STOCK IDEA

SCRIPT	B/S	CMP	TARGET
ZEEENT.	S	447	420
BATA	B	1118	1160
REPCOHOME	B	388	400
DHFL	B	241	260
IRB	B	168	180

VOLUME BREAKOUT STOCKS

SCRIPT	CMP
Arshiya	31.05
Agarwal Indl. Corp	230.3
Amrutanjan Health	292.6
BhandariHosiery Exp.	2.07
Ashima	15.8

Buy on dips & Sell on rise with Stop-loss of 3%



WOMEN
Desk

204 Amardarshan Building 3rd floor Saket Nagar , Indore-452018

Call: 0731-4797170-173 Mob: +91-9303172345 / Toll Free: 18001030059 / SMS: <INDIRA> to 56070

DISCLAIMER

This report is for private circulation within the Indira Group. This report is strictly confidential and for information of the selected recipient only and may not be altered in any way, transmitted to, copied or distributed, in part or in whole, to any other person or to the media or reproduced in any form. This report should not be construed as an offer or solicitation to buy or sell any securities or any interest in securities. It does not constitute a personal recommendation or take into account the particular investment objectives, financial situations, or any such factor. The information, opinions estimates and forecasts contained here have been obtained from, or are based upon, sources we believe to be reliable, but no representation of warranty, express or implied, is made by us to their accuracy or completeness. Opinions expressed are our current opinions as of our current opinions as of the data appearing on this material only and are subject to change without notice.