

MONDAY



WEEKLY EQUITY REPORT

02 JULY TO 06 JULY 2018

**BULL
MARKET**



Indira Securities Pvt. Ltd.

www.indiratrade.com



TOP STORIES THIS WEEK

- U.S. manufacturing probably continued to expand at a robust pace in June, economists forecast ahead of Monday's release.
- The Reserve Bank of Australia has a policy decision Tuesday.
- The U.S. celebrates Independence Day on July 4, Wednesday. Stock and bond markets are closed, along with government offices.
- Federal Reserve releases minutes of its June 12-13 meeting, when FOMC policy makers raised the benchmark rate a quarter point for the second time this year, and lifted their median forecast to four total increases in 2018.
- U.S. payrolls are due Friday.
- Also on Friday, the U.S. is scheduled to impose tariffs on \$34 billion of Chinese goods. Beijing has said it will slap tariffs on an equal value on U.S. exports including agricultural and auto exports.

WEEKLY INDICES

| INDEX | CLOSE | PREV. CLOSE | CHANGE % |
|---------|----------|-------------|----------|
| SENSEX | 35423.48 | 35622.14 | -0.56% |
| NIFTY | 10714.3 | 10817.7 | -0.96% |
| MIDCAP | 15450.9 | 16001.2 | -3.44% |
| SMLCAP | 16032.15 | 16961.16 | -5.48% |
| METAL | 13064.49 | 13406.34 | -2.55% |
| OIL&GAS | 13659.5 | 14397.31 | -5.12% |
| AUTO | 23838.3 | 24849.93 | -4.07% |
| TECK | 7164.97 | 7184.87 | -0.28% |
| BANKEX | 29250.56 | 29557.61 | -1.04% |
| IT | 13920.07 | 13951.11 | -0.22% |
| FMCG | 11213.28 | 11216.66 | -0.03% |
| HC | 14003.64 | 14301.44 | -2.08% |
| PSU | 7291.6 | 7721.54 | -5.57% |
| CD | 20206.69 | 20517.95 | -1.52% |
| POWER | 1946.64 | 2016.65 | -3.47% |
| CG | 17488.15 | 18288.89 | -4.38% |
| REALTY | 2073.37 | 2182.53 | -5.00% |

GLOBAL INDICES CHANGES

| INDEX | CLOSE | PREV. CLOSE | CHANGE % |
|----------|---------|-------------|----------|
| DOW | 24271.4 | 25090.48 | -3.26% |
| NASDAQ | 7510.3 | 7746.38 | -3.05% |
| FTSE | 7636.93 | 7633.91 | 0.04% |
| NIKKEI | 22304.5 | 22711.71 | -1.79% |
| HANGSENG | 28955.1 | 30309.49 | -4.47% |

TOP GAINERS WEEKLY

| SCRIPT | PRICE | CHANGE % |
|---------------------|-------|----------|
| NDTV | 51.45 | 55.67 |
| Vanta Bioscience | 73.4 | 54.2 |
| Zim Laboratories | 470 | 44.77 |
| AMJ Land Holdings L | 31.75 | 32.29 |
| Kuber Udyog L | 8.65 | 30.27 |

TOP LOSERS WEEKLY

| SCRIPT | PRICE | CHANGE % |
|---------------------|---------|----------|
| Uniply Industries | 80.5 | -80.59 |
| Filatex India | 43.85 | -78.85 |
| Avanti Feeds Lim | 538.95 | -65.12 |
| Kaycee Inds. | 3258.05 | -60.37 |
| The New India Assur | 318 | -50.82 |

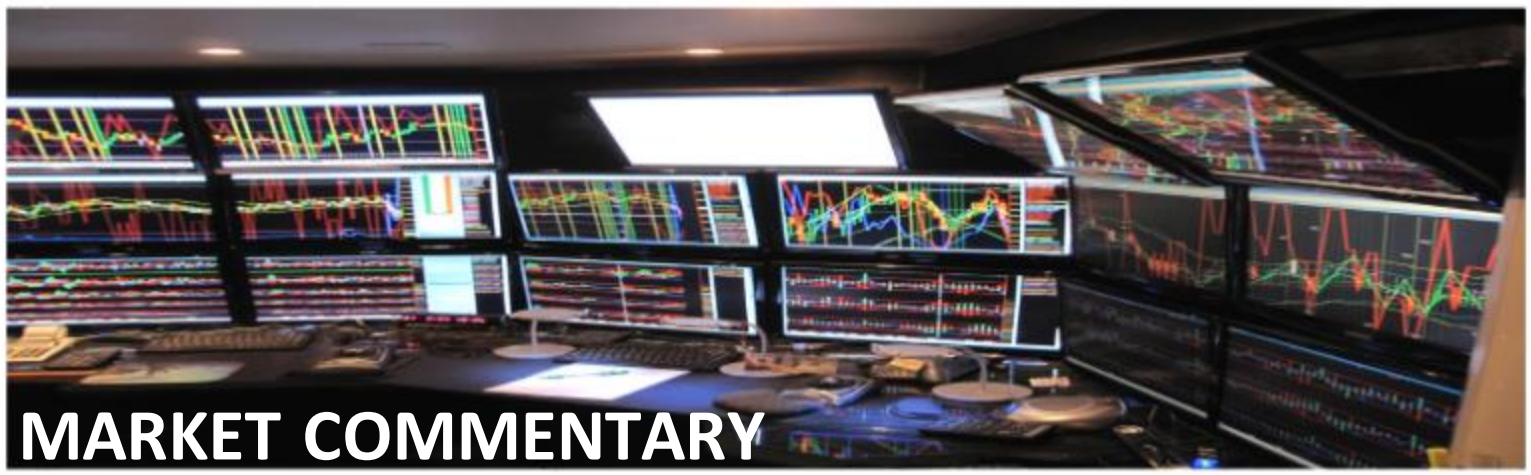


SUPPORT AND RESISTANCE

| S3 | S2 | S1 | Nifty | R1 | R2 | R3 |
|-------|-------|-------|-------|-------|-------|-------|
| 10460 | 10565 | 10630 | 10714 | 10798 | 10863 | 10967 |

MOVING AVERAGE

| MA20 | MA50 | MA100 | MA200 |
|-------|-------|-------|-------|
| 10552 | 10304 | 9548 | 8829 |



The index rose 133.95 points, or 1.26% at the day's high of 10,723.05. The index fell 23.25 points, or 0.22% at the day's low of 10,612.35.

Among secondary barometers, the BSE Mid-Cap index rose 1.81%. The BSE Small-Cap index rose 1.92%. Both these indices outperformed the Sensex.

Nifty likely to trade in the range between 10450-11000

STOCK AT 52 WEEK HIGH

| SCRIPT | CMP |
|-----------------|----------|
| Infosys | 1,306.75 |
| Godrej Consumer | 1,224.90 |
| Britannia Ind. | 6,196.40 |
| Bata India | 859.05 |
| Dr Lal Pathlabs | 954.95 |

STOCK AT 52 WEEK LOW

| SCRIPT | CMP |
|---------------------|--------|
| Hindustan Petroleum | 259.10 |
| Bank Of Baroda | 112.80 |
| Castrol India | 164.80 |
| Gujarat Gas | 732.20 |
| IDFC Ltd. | 46.25 |

FII ACTIVITY

| DATE | FIGURES IN CRORE |
|------------|------------------|
| 25/06 | 198.68 |
| 26/06 | -538.40 |
| 27/06 | 67.44 |
| 28/06 | -951.51 |
| 29/06 | -157.15 |
| NET | -1380.94 |

DII ACTIVITY

| DATE | FIGURES IN CRORE |
|------------|------------------|
| 25/06 | -86.22 |
| 26/06 | 238.05 |
| 27/06 | 84.31 |
| 28/06 | 442.64 |
| 29/06 | 2262.83 |
| NET | +2941.61 |

WEEKLY STOCK IDEA

| SCRIPT | B/S | CMP | TARGET |
|--------------|-----|-----|--------|
| ASHOK LEY | B | 129 | 138 |
| NETCO PHARMA | B | 824 | 870 |
| TATA STEEL | B | 578 | 594 |
| BPCL | B | 372 | 392 |
| JET AIRWAYS | B | 350 | 370 |

VOLUME BREAKOUT STOCKS

| SCRIPT | CMP |
|-------------------|---------|
| Matrimony | 833 |
| Hind Net Glass | 100 |
| Shankara Buildcon | 1533.85 |
| Bharti Airtel | 377.35 |
| S Chand | 347 |

Buy on dips & Sell on rise with Stop-loss of 3%



WOMEN Desk



204 Amardarshan Building 3rd floor Saket Nagar , Indore-452018

Call: 0731-4797170-173 Mob: +91-9303172345 / Toll Free: 18001030059 / SMS: <INDIRA> to 56070

DISCLAIMER

This report is for private circulation within the Indira Group. This report is strictly confidential and for information of the selected recipient only and may not be altered in any way, transmitted to, copied or distributed, in part or in whole, to any other person or to the media or reproduced in any form. This report should not be construed as an offer or solicitation to buy or sell any securities or any interest in securities. It does not constitute a personal recommendation or take into account the particular investment objectives, financial situations, or any such factor. The information, opinions estimates and forecasts contained here have been obtained from, or are based upon, sources we believe to be reliable, but no representation of warranty, express or implied, is made by us to their accuracy or completeness. Opinions expressed are our current opinions as of the data appearing on this material only and are subject to change without notice.