

# WEEKLY REPORT

12<sup>th</sup> to 17<sup>th</sup> Sep 2016

# MARBUZZ

the market buzz



## Its high time for Networks



# Keep an Eye on Changing Market Place...



## TOP STORIES THIS WEEK

- India's Index for Industrial Production (IIP) contracted 2.4% in July 2016 as against the growth of 2.1% in June 2016.
- India Consumer Price Index (CPI) inflation for August 2016 was at 5.05% vs 6.07% in July 2016. Whereas, Wholesale Price Index (WPI) rises to 3.74% in August 2016 vs 3.55% in July 2016.
- Cairn & Vedanta shareholders approve merger of Cairn India and Vedanta
- Tata Motors global wholesales at 86.28lk units in Aug, up 16% YoY.
- Reliance Capital board Approves Plan to independently, List Home Finance Biz On Exchanges.
- Reliance Communications announces merger with Aircel. Wireless business of RCOM to be combined with Aircel.
- Bayer to acquire Monsanto for USD 128 per share.
- Hindalco to sell Brazil plant, Bauxite mines to pare debt.
- Ashok Leyland board has approved the amalgamation of Hinduja Foundries.
- PVR - Delhi HC approves merger of Bijli Holdings with itself
- Coal India Q1 Cons Net Profit Down 14.8% At ₹3,065.2 Cr Vs ₹3,596.9 Cr (YoY) Cons Total Income Down 5.6% At ₹18,421.9 Cr Vs ₹19,518.1 Cr (YoY)

## WEEKLY INDICES CHANGE

Index	Close	Prev Close	CHG(%)
SENSEX	28599	28797	-0.69
NIFTY	8779	8866	-0.98
MIDCAP	13050	13345	-2.21
SMLCAP	12764	12861	-0.75
METAL	9508	10080	-5.67
OIL&GAS	11092	11193	-0.90
AUTO	22419	22844	-1.86
TECK	5667	5615	0.93
BANKEK	22734	23249	-2.22
IT	10326	10207	1.17
FMCG	8874	8871	0.03
HC	16474	16587	-0.68
PSU	7461	7679	-2.84
CD	12568	12716	-1.16
POWER	2057	2127	-3.29
CG	14989	15402	-2.68
REALTY	1541	1612	-4.40

## GLOBAL INDICES

Index	Close	Prev Close	CHG(%)
DOW	18123	18085	0.21
NASDAQ	5244	5125	2.32
FTSE	6710	6776	-0.97
NIKKEI	16519	16965	-2.63
HANGSENG	23335	24099	-3.17

## TOP GAINERS WEEKLY

Scrip	Price	% Chg
Gitanjali Gems	59.75	25.26
Hind. Composites	1875.05	23.61
Zee Media Corp	29.00	14.62
Inox Wind Ltd.	199.05	11.14
Tata Investment	646.20	9.51

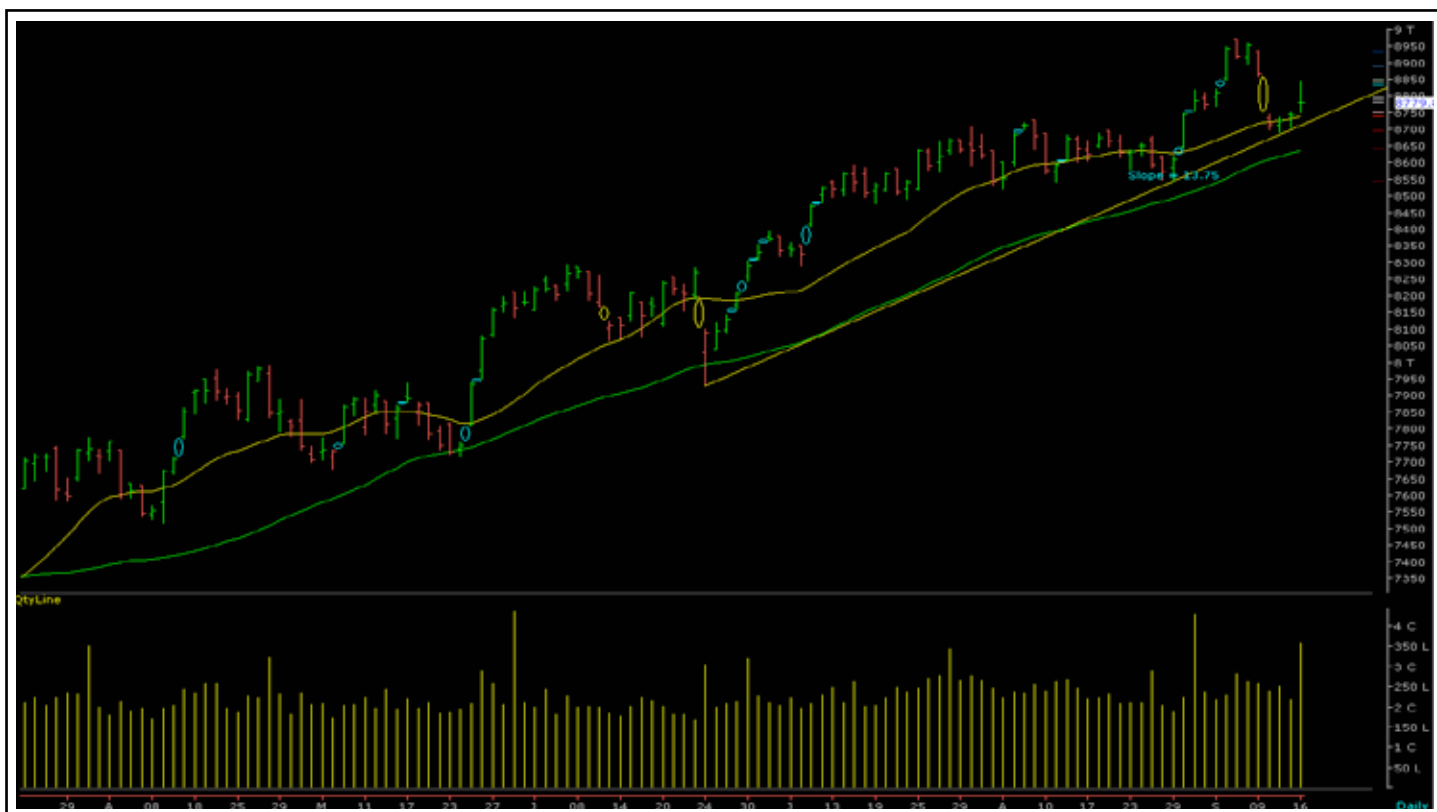
## TOP LOSERS WEEKLY

Scrip	Price	% Chg
Man Industries	50.45	14.13
BEML Ltd.	922.05	14.09
HDIL	88.90	11.81
Reliance Def.& Eng.	57.40	11.62
IIFL Holdings	248.20	11.61



# NIFTY CORNER

0.0003 -13.04% 0.  
 0.0001 -50.00% 0.  
 0.0003 14.29% 0.  
 12.50% 0.



## SUPPORT & RESISTANCE

S3	S2	S1	Nifty	R1	R2	R3
8450	8550	8650	8779	8850	8950	9050

## MOVING AVERAGES

20DMA	50 DMA	100 DMA	200 DMA
8735	8635	8335	7945

## COMMODITY MARKET

Scrip	Close	P. Close	Change %
GOLD	30813	31217	-1.29
Silver	45273	46194	-1.99
Crude	2885	3080	-6.33

## CURRENCY RATES

Scrip	Close	P. Close	Change %
INR- 1 USD	66.8804	66.5462	0.50
INR – 1 EURO	75.1535	75.0242	0.17
INR- 100 YEN	65.5200	65.1300	0.60
INR – 1 POUND	88.4694	88.5863	-0.13

# MARKET COMMENTARY

Key benchmark indices declined in the truncated trading week. After suffering steep losses on first trading day of the week, key indices edged higher in remaining three trading sessions during the week ended 16 September 2016. In the week ended Friday, 16 September 2016, the Sensex fell 0.69% to settle at 28,599. The Nifty 50 index fell 0.98% to settle at 8,779. The BSE Mid-Cap index lost 2.21% to settle at 13,051. The BSE Small-Cap index fell 0.75% to settle at 12,764. The fall in both these indices was higher than the Sensex's decline in percentage terms. For the next week Nifty likely to trade in the range between 8850 – 8950 in the upper side and 8650 – 8550 in the lower side.

## STOCKS AT 52 WK HIGH

Scrip	CMP
Alkem Lab	1682.10
Deepak Fert	242.65
Exide Ind	193.45
Jain Irrigation	97.90
Maruti Suzuki	5573.30

## STOCKS AT 52 WK LOWT

Scrip	CMP
AstraZeneca	983.45
GlaxoSmithKline	2826.45
Ramco System	473.50
Sharon Bio Medi	8.35
Stampede Cap	39.40

## FII ACTIVITY

DATE	FIGURES IN CRORE
12/09	-593.61
13/09	--
14/09	-477.33
15/09	345.42
16/09	660.59
NET	-64.93

## DII ACTIVITY

DATE	FIGURES IN CRORE
12/09	-12.90
13/09	--
14/09	-8.53
15/09	-456.91
16/09	-213.13
NET	-691.47

## WEEKLY STOCK IDEA

Scrip	B/S	CMP	TGT
RELINFRA	B	590	615
TVSMOTORS	B	338	355
PNB	B	138	155
SUNPHARMA	B	783	815
WOCKPHARMA	B	909	945

## VOLUME BREAKOUT STOCKS

Scrip	CMP
JBF Industries	235.75
United Brewerie	828.75
Polaris Consulting	169.15
Sadbhav Infra	106.25
Wockhardt	909.65

Buy on dips & Sell on rise with Stop-loss of 3%





# WEEK AHEAD

## MAJOR RESULTS AGM MEETING THIS WEEK:

### 19 SEPTEMBER 2016

- NFL
- HGS
- CARERATING
- MAXVIL
- IRB
- FINANTECH
- MAXINDIA

### 20 SEPTEMBER 2016

- DBREALTY
- PVR
- IFCI
- SHALPAINTS
- JPASSOCIAT
- EROSMEDIA

### 21 SEPTEMBER 2016

- MUTHOOTFIN
- MONTECARLO
- ABAN
- GMDCLTD
- GUJGASLTD
- MCDHOLDING

### 22 SEPTEMBER 2016

- CIMMCO
- IDEA
- SUZLON
- DHANBANK
- DISHTV
- TV18BRDCST
- SRSLTD
- NETWORK18
- KSQL
- HDIL
- MTNL
- NMDC

### 23 SEPTEMBER 2016

- PRAKASH
- JMTAUTOLT

# COMMODITY OUTLOOK

## ■ GOLD-OCT:

Over the past week, investors pulled \$698 million from SPDR Gold Shares, the largest exchange-traded fund, backed by the metal, taking their holdings to the lowest since June, data compiled by Bloomberg through Tuesday shows. Through Tuesday, aggregate open interest in gold futures dropped for four straight sessions, the longest stretch since May.

It has major support at 30600/30270, if it breaks 30600, then only you can see upto 30333/30070 levels. On the upper side major Resistance is at 31591, if it breaks in future then only it can move upto 31845/32299.

## ■ SILVER-DEC:

MCX Silver-Dec has major support at 44700/43500, if it breaks 44700, then only it can go down to

44400/43700 levels. And on the upper side it has major Resistance @47091/48400.

## ■ COPPER-NOV:

Technically, MCX Copper-Nov seems to be at support; it has major support at 316, if it breaks, then only you can see it upto 311/306 levels. It has major Resistance at @331/339.

## ■ CRUDE OIL-OCT:

After the Crude oil inventories on 14/09/2016, it seems too weak, it has major & crucial support at 2850, if it breaks 2850 & if upcoming U.S. Job data & Manufacturing data will not support it, then only it can go down to 2766/2691. Otherwise it may retreat upto 3048/3175.

## PRECIOUS METALS

Commodity	S2	S1	Pivot	R1	R2
Gold-Oct	30330	30600	30966	31275	31591
Silver-Dec	43500	44770	45560	46310	47091

## BASE METALS

Commodity	S2	S1	Pivot	R1	R2
Copper-Nov	297	309	319	331	340
Zinc-Sep	141.10	144.90	149.40	153.30	158.20
Lead-Sep	118.70	123.45	128.30	133.45	138.20
Nickel-Sep	592	623	661	691	730

## ENERGY

Commodity	S2	S1	Pivot	R1	R2
Crude oil-Oct	2691	2786	2966	3114	3295
Natural Gas-Sep	178	186	194	201	209

Joint us :



Launches



Making it easy for Women Traders/Investors and helping them achieve their financial goals, Indira Securities introduces the concept of Women Desk. Under which equipped office space, management facilities, expert guidance, advanced softwares like Advance Get, Falcon, Ace equity research, Greek option analysis etc provide charting/research facilities also to traders. Women relationship officers are also appointed here for any assistance. This trading desk is indeed a very good platform for women to become successful trader/investor in capital market.

'Ramavat House' E-15 Saket Nagar, Indore-452018

**Call:** 0731-4097170-173 | **Mob:** +91-9303172345 | **Toll Free :** 18001030059 | **SMS <INDIRA>** to 56070

**Disclaimer:** This report is for private circulation within the Indira Group. This report is strictly confidential and for information of the selected recipient only and may not be altered in any way, transmitted to, copied or distributed, in part or in whole, to any other person or to the media or reproduced in any form. This report should not be construed as an offer or solicitation to buy or sell any securities or any interest in securities. It does not constitute a personal recommendation or take into account the particular investment objectives, financial situations, or any such factor. The information, opinions estimates and forecasts contained here have been obtained from, or based upon, sources we believe to be reliable, but no representation of warranty, express or implied, is made by us to their accuracy or completeness. Opinions expressed are our current opinions as of the date appearing on this material only and are subject to change without notice.