

**WEEKLY REPORT**

22<sup>nd</sup> to 27<sup>th</sup> August 2016



# From **Goodbye** to **Good Luck**

## **Welcome**

Mr. Urjit Patel - RBI Governor



# Keep an Eye on Changing Market Place...



## TOP STORIES THIS WEEK

- Biocon & Mylan proposed Biosimilar Trastuzumab accepted for review by European medicine agencies
- HCL tech to move into cloud automation and IP products.
- Ujjivan subsidiary company submits application to RBI for banking license
- MOIL executed 76.4Ha mining lease by government of MP
- Birla Corp Completes Acquisition Of Reliance Cement From Reliance Infra
- Tata global beverage looks to enter dairy business.
- MCX & MSEI settle ongoing dispute over 41.5 crore warrants.
- J Kumar Infra: JV With CRTG Wins MMRC Order Worth ₹5,012 Cr For Metro 3 Project.
- Mandhana: Pact With 'Being Human' Finalised & Executed With Unit MRVL.
- HPCL Q1 -Net profit up 30 percent at Rs 2,098.4 crore versus Rs 1,614.1 crore (YoY). Total income down 5.8 percent at Rs 51,661 crore Rs 54,822.3 crore (YoY)
- Aurobindo Pharma Q1 -Net profit up 23.8 percent at Rs 585 crore versus Rs 472.5 crore (YoY). Total income up 12.9 percent at Rs 3,725.9 crore versus Rs 3,298.9 crore (YoY)

## WEEKLY INDICES CHANGE

Index	Close	Prev Close	CHG(%)
SENSEX	27782	28077	-1.05
NIFTY	8572	8666	-1.08
MIDCAP	13000	13035	-0.27
SMLCAP	12487	12459	0.22
METAL	9870	10144	-2.70
OIL&GAS	10910	10851	0.54
AUTO	21235	21417	-0.85
TECK	5721	5786	-1.12
BANKEK	22005	22296	-1.31
IT	10390	10536	-1.39
FMCG	8706	8699	0.08
HC	16055	16201	-0.90
PSU	7405	7516	-1.48
CD	12298	12198	0.82
POWER	2070	2115	-2.13
CG	14673	15126	-2.99
REALTY	1550	1583	-2.08

## GLOBAL INDICES

Index	Close	Prev Close	CHG(%)
DOW	18395	18552	-0.85
NASDAQ	5218	5238	-0.38
FTSE	6838	6858	-0.29
NIKKEI	16360	16545	-1.12
HANGSENG	22909	22937	-0.12

## TOP GAINERS WEEKLY

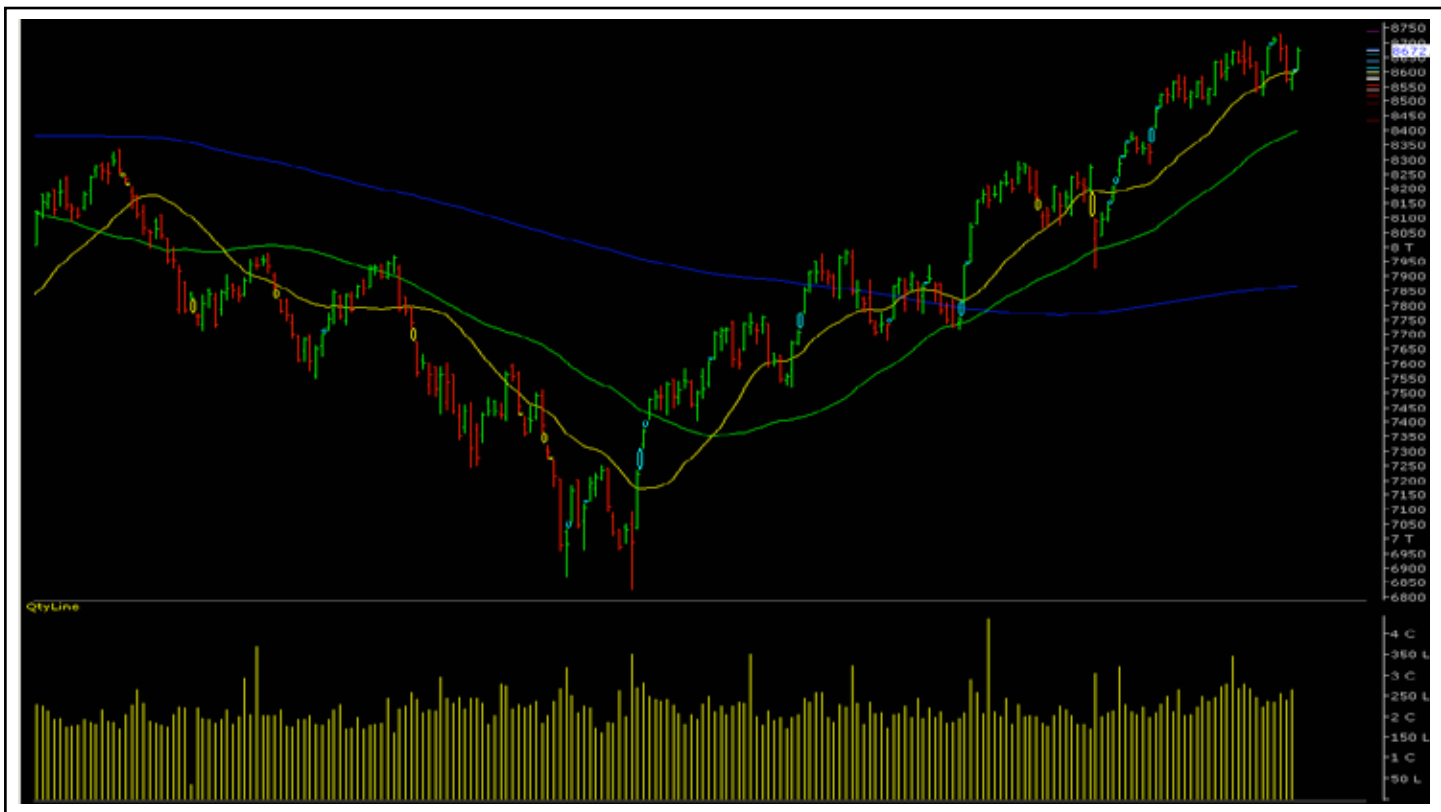
Scrip	Price	% Chg
V2 Retail	95.15	50.32
Kirloskar Industries	1019.10	31.48
Deepak Fertilisers	223.35	23.74
Prabhat Dairy	94.05	19.89
Trident Ltd.	56.45	18.10

## TOP LOSERS WEEKLY

Scrip	Price	% Chg
Welspun India	49.40	52.13
Shriram Pistons	1548.70	17.55
Global Offshore Ser	136.10	12.59
Supreme Infrastructur	95.35	9.62
ROHL	66.45	9.52



# NIFTY CORNER



## SUPPORT & RESISTANCE

S3	S2	S1	Nifty	R1	R2	R3
8300	8350	8400	8572	8650	8750	8800

## MOVING AVERAGES

20DMA	50 DMA	100 DMA	200 DMA
8615	8435	8155	7875

## COMMODITY MARKET

Scrip	Close	P. Close	Change %
GOLD	30990	31404	-1.32
Silver	43977	45444	-3.29
Crude	3194	3247	-1.63

## CURRENCY RATES

Scrip	Close	P. Close	Change %
INR- 1 USD	67.0299	66.9296	0.15
INR – 1 EURO	75.7371	75.8714	-0.18
INR- 100 YEN	66.7200	66.8200	-0.15
INR – 1 POUND	88.5934	87.9723	0.70

# MARKET COMMENTARY

The market declined last week, reflecting the cautious mood in global equities, ahead of the eagerly awaited commentary from US Federal Reserve on how aggressively it plans to raise rates. In the week ended Friday, 26 August 2016, the Sensex fell 294.75 points or 1.05% to settle at 27,782. The Nifty 50 index fell 94.35 points or 1.09% to settle at 8,572. The BSE Mid-Cap index fell 35.02 points or 0.27% to settle at 13,000.15. The decline in this index was lower than the Sensex's decline in percentage terms. The BSE Small-Cap index gained 27.66 points or 0.22% to settle at 12,487, outperforming the Sensex. For the next week nifty likely to trade in the range between 8650 – 8750 in the upper side and 8400 – 8350 in the lower side.

## STOCKS AT 52 WK HIGH

Scrip	CMP
Biocon	892.45
Dewan Housing	283.50
Indiabulls Hsg	818.95
Kotak Mahindra	780.80
Rel Capital	502.85

## STOCKS AT 52 WK LOWT

Scrip	CMP
Blue Dart	5127.10
GlaxoSmithKline	2981.7
Ortel Comm	142.75
Welspun India	49.40
Wipro	490.00

## FII ACTIVITY

DATE	FIGURES IN CRORE
22/08	-300.50
23/08	-0.19
24/08	-39.28
25/08	-372.08
26/08	341.35
NET	-370.7

## DII ACTIVITY

DATE	FIGURES IN CRORE
22/08	52.5
23/08	-451.87
24/08	129.18
25/08	-357.02
26/08	-266.43
NET	-893.64

## WEEKLY STOCK IDEA

Scrip	B/S	CMP	TGT
BINANIIND	B	114	135
RAJESHEXPO	B	442	475
TATAMOTORS	B	503	535
M&M	B	1424	1475
LICHSGFIN	B	577	615

## VOLUME BREAKOUT STOCKS

Scrip	CMP
Aro Granite	80.70
Trident	56.45
GRUH Finance	346.05
Future Life	137.65
Shilpa	551.70

Buy on dips & Sell on rise with Stop-loss of 3%



# WEEK AHEAD

## MAJOR RESULTS AGM MEETING THIS WEEK:

29 AUGUST

- ASHOKA ■ PRAKASH
- RCF ■ MOIL ■ IOC
- ECLERX ■ GMDCLTD
- DLF

30 AUGUST

- COX&KINGS
- WHIRLPOOL
- CROMPGREAV

31 AUGUST

- UBHOLDINGS ■ SADBHIN
- SADBHAV ■ POWERMECH
- KANORICHEM ■ HATHWAY
- GVKPIL ■ ABFRL

01 SEPTEMBER

- TVTODAY ■ KALINDEE
- MGL ■ APOLLOHOSP
- BPCL

02 SEPTEMBER

- PENINLAND ■ MEP
- JKIL ■ NOIDATOLL
- INOXWIND

# COMMODITY OUTLOOK

## ■ GOLD-OCT:

Yellen says as on Aug-26, 2016; case for Fed rate hike has strengthened: - In her conclusion, Yellen expressed her belief that (U.S. Interest Rate fully depends on upcoming economic data) the monetary policy will "continue to play a vital part in promoting a stable and healthy economy." She added that the Fed expected inflation to rise to the 2% target "over the next few years".

It has major support at 30830/30600, if it will break @30830, then only you can see it upto-> 30600/30270. And upper side major Resistance on 31570, if it will break in future then only you can see upto-> 32200/32750.

## ■ SILVER-SEP:

MCX Silver-Sep has major support = 43200/41400, if

it will break @43200, then only you can see it upto-> 42700/41400. And upper side it has major Resistance @45900/47250.

## ■ COPPER-AUG:

Technically, Copper-Aug seems too weak; it may be down upto-> 305/297 in a few days. It has major Resistance at @322.70/333.

## ■ CRUDE OIL-AUG:

Technically, it seems more positive, it has major support = 3110, if it will not break @3110 & if upcoming U.S. Job data & Manufacturing data will support it, then only you can see a retracement upto-> 3270/3390.

## PRECIOUS METALS

Commodity	S2	S1	Pivot	R1	R2
Gold-Oct	30210	30566	31105	31570	31966
Silver-Sep	41655	42900	44260	45500	46870

## BASE METALS

Commodity	S2	S1	Pivot	R1	R2
Copper-Aug	291	303	312	318	327
Zinc- Aug	149.20	152.10	154.50	158.20	161.55
Lead-Aug	120.20	122.75	124.70	127.60	130.30
Nickel-Aug	612	636	668	693	724

## ENERGY

Commodity	S2	S1	Pivot	R1	R2
Crude oil-Sep	2940	3060	3195	3318	3455
Natural Gas-Sep	171	180	187	199	209



# FANTASTIC FOUR CALLS

DATE	SCRIPT	QTY	POSITION	RATE	TG-1	TOTAL PROFIT OR LOSS (Rs.)
1/4/2016	JAYSREETEA	1163	LONG	86.00	92.00	6976.74
18/4/2016	NATIONALUM	2262	LONG	44.20	47.90	8371.04
20/4/2016	RCF	2198	LONG	45.50	43.00	-5494.51
20/4/2016	SUNFLAG	4348	LONG	23.00	25.50	10869.57
20/4/2016	JINDALPOLY	199	LONG	502.80	508.70	1173.43
20/4/2016	AMBIKCO	114	LONG	878.00	850.00	-3189.07
22/4/2016	NELCO	1028	LONG	97.30	101.00	3802.67
27/4/2016	MCX	112	LONG	895.00	920.00	2793.30
29/4/2016	DLF	772	LONG	129.50	126.00	-2702.70
3/5/2016	V2RETAIL	1905	LONG	52.50	57.00	8571.43
12/5/16	TATASTEEL	305	LONG	328.40	345.00	5054.81
13/6/2016	TATACOFFEE	1045	LONG	95.70	105.75	10501.57
20/6/2016	MARALOVER	3636	LONG	27.50	30.50	10909.09
29/06/2016	MANINFRA	2160	LONG	46.30	42.00	-9287.26
29/6/2016	ADANITRANS	2628	LONG	38.05	42.00	10381.08
1/7/2016	DECNGOLD	2016	LONG	49.60	61.00	22983.87
20/7/2016	SPARC	277	LONG	361.45	375.25	3817.96
18/7/2016	EMCO	3226	LONG	31.00	33.00	6451.61
17/08/2016	HCL-INSYS	2500	LONG	40.00	41.85	4625.00
						<b>96609.63</b>

\*calculation on investment amount of 1 lacs in each trade

Launches



Making it easy for Women Traders/Investors and helping them achieve their financial goals, Indira Securities introduces the concept of Women Desk. Under which equipped office space, management facilities, expert guidance, advanced softwares like Advance Get, Falcon, Ace equity research, Greek option analysis etc provide charting/research facilities also to traders. Women relationship officers are also appointed here for any assistance. This trading desk is indeed a very good platform for women to become successful trader/investor in capital market.

'Ramavat House' E-15 Saket Nagar, Indore-452018

**Call:** 0731-4097170-173 | **Mob:** +91-9303172345 | **Toll Free :** 18001030059 | **SMS <INDIRA>** to 56070