

## Top Stories This Week

- Nalco Inks MoU With Government For Higher Production FY17. Revenue Target Excluding Excise Duty Set At Rs 7,100 Cr
- JSW Energy To Acquire 500 MW Bina Thermal Power Plant From Jaiprakash Power Ventures for Enterprise Value Of Rs 2,700 Cr
- Government to privatize 2 loss making SAIL units Salem steel plant and Visvesvarya iron and steel plant(fe)
- Government to allow 100% FDI in private banks(HT)
- Exide to invest 1400 cr on new technology over next 2 years: BS
- HPCL Board Approves Hiking Visakh Refinery Capacity To 15 mmpa From 8.33 mmpa. Recommends Bonus Issue In The Ratio Of 2 Shares For Every 1 Held
- ITC Q1 -Standalone net profit up 10.1 percent at Rs 2,384.7 crore versus Rs 2,166.1 crore (YoY). Standalone total income up 8.3 percent at Rs 13,253 crore versus Rs 12,232.7 crore (YoY)
- Mindtree Q1 -Net Profit Down 7.1 percent At Rs 123.5 Crore Versus Rs 133 Crore (QoQ). EBITDA Down 11.6 percent At Rs 195.1 Crore Versus Rs 220.6 Crore (QoQ)
- Wipro Q1 Cons Net Profit Down 8.3% At `2,052 Cr Vs `2,238 Cr (QoQ). IT Services Revenue Up 2.4% At `13,109 Cr Vs `12,796.7 Cr (QoQ)

## Weekly Indices Change

Index	Close	Prev Close	Chg. (%)
SENSEX	27803	27836	-0.12
NIFTY	8541	8541	0.00
MIDCAP	12277	12125	1.25
SMLCAP	12107	11979	1.07
METAL	9434	9368	0.70
OIL&GAS	10446	10191	2.50
AUTO	20646	20423	1.09
TECK	5851	5845	0.10
BANKEK	21377	21720	-1.58
IT	10652	10608	0.41
FMCG	8627	8618	0.10
HC	16367	16060	1.91
PSU	7100	7078	0.31
CD	12099	12249	-1.22
POWER	2036	2020	0.79
CG	15549	15546	0.02
REALTY	1601	1588	0.82

## Global Indices

DOW	18570	18516	0.29
NASDAQ	5100	5029	1.41
FTSE	6730	6669	0.91
NIKKEI	16627	16497	0.79
HANGSENG	21964	21659	1.41

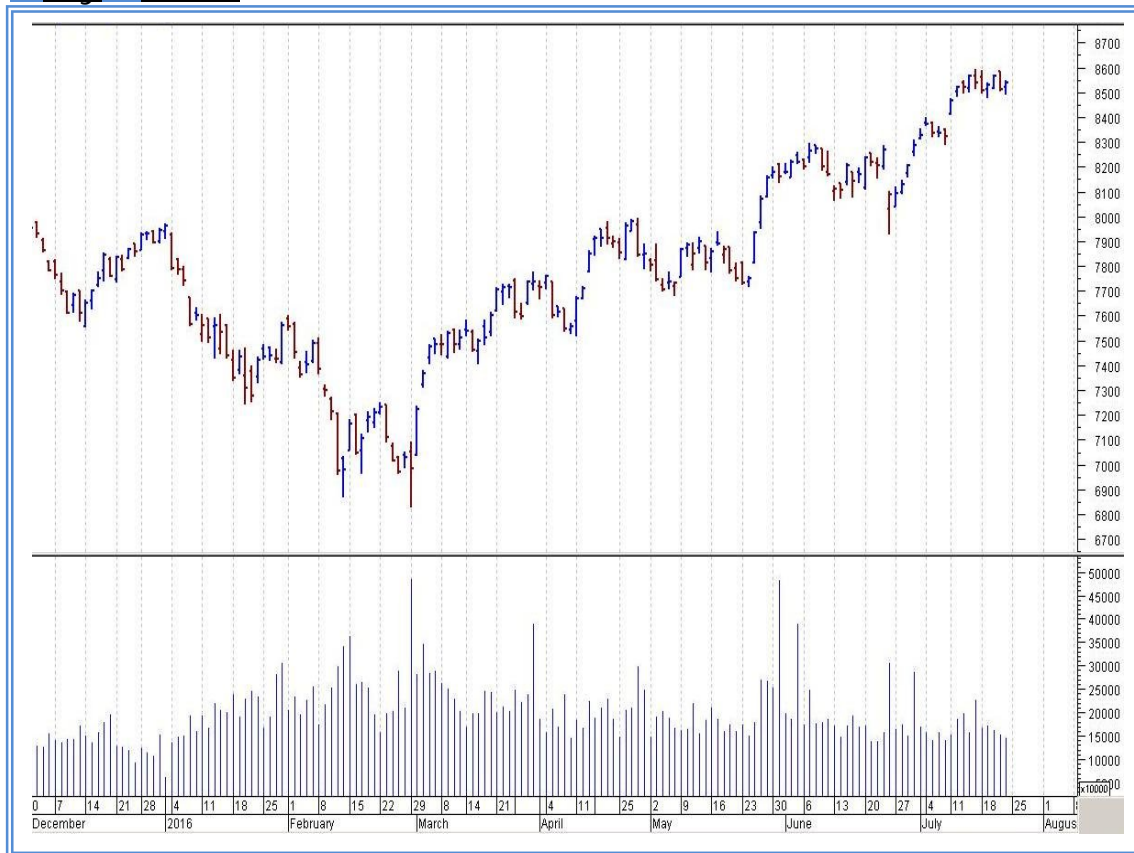
## Top Gainers Weekly

Scrip	Price	% Chg
Rane Brake Lining Ltd	638.85	41.09
Tata Metaliks	477.55	40.35
Anant Raj Ltd.	63.00	30.30
Motilal Oswal Finance	484.9	24.37
JM Financial Ltd.	63.75	22.13

## Top Losers Weekly

Scrip	Price	% Chg
Max India	130.75	19.51
Bharat Bijlee	824.80	13.36
Tree House Education	37.70	12.83
MindTree Ltd.	556.90	12.61
Punjab National Bank	120.20	11.59

## Nifty Corner



Support & Resistance						
S3	S2	S1	Nifty	R1	R2	R3
8300	8400	8450	8541	8650	8750	8800
Moving Averages						
20DMA	50DMA	100DMA	200DMA			
8235	8075	7795	7805			

## Market Commentary

Key benchmark indices registered minuscule losses in the week ended Friday, 22 July 2016. The barometer index, the S&P BSE Sensex settled below the psychologically important 28,000 level after surpassing that level in the course of trading during the week. The Sensex lost 33.26 points or 0.11% to settle at 27,803.24. The Nifty 50 index fell 0.20 points to settle at 8,541.20. The broader market depicted strength. The BSE Mid-Cap index rose 1.25%. The BSE Small-Cap index rose 1.06%. Both these indices outperformed the Sensex. Key benchmark indices registered modest losses in the first trading session of the week on Monday, 18 July 2016. The Sensex lost 89.84 points or 0.32% to settle at 27,746.66, its lowest closing level since 11 July 2016. For the next week Nifty likely to trade in the range between 8650 – 8750 in the upper side and 8450 – 8400 in the lower side.

### Stocks at 52 wk High

Scrip	Cmp
Asian Paints	1047.05
Bharat Financial	843.60
Biocon	809.70
Cairn India	191.90
GAIL	394.75

### Stocks at 52 wk Low

Scrip	Cmp
Kalyani Invest	1251.05
Pokarna	872.00
Pratibha Ind	28.15
SRS	7.90
Tree House	37.70

### FII Activity

Date	Figures in crore
18/07	599.09
19/07	548.90
20/07	215.21
20/07	420.22
22/07	437.78
NET	2221.20

### DII Activity

Date	Figures in crore
18/07	-439.09
19/07	-377.43
20/07	-45.45
20/07	-372.40
22/07	-365.67
NET	-1600.04

### Weekly Stock Idea

Scrip	B/S	Cmp	Tgt
PFOCUS	B	68	85
PNB	B	120	135
COFFEDAY	B	251	285
BEML	B	982	1035
TWL	B	100	115

Buy on dips & Sell on rise with Stop-loss of 3%

### Volume Breakout Stocks

Scrip	Cmp
Guj Alkali	249.00
UFO Moviez	597.70
Biocon	810.10
Rane Brake	640.55
JM Financial	63.30

### Week Ahead

MAJOR RESULTS/AGM MEETING THIS WEEK:

25 JULY: IBULHSGFIN, CANBK, EVEREADY, MYSOREBANK, TATASPONGE,  
 26 JULY: TATAELXSI, INFRATEL, MCDOWELL-N, SBT, IDFC, ACC, IDFCBANK,  
 SCI, ZEEL, DRREDDY, AMBUJACEM, TVSMOTOR, MARUTI  
 27 JULY: GICHSGFIN, ASIANPAINT, BAJAJ-AUTO, HDFC, DABUR, BHARTIARTL,  
 JSWSTEEL, CASTROLIND, YESBANK,  
 28 JULY: PNB, SINTEX, EICHERMOT, ESCORTS, DISHTV, CEATLTD, MAHLIFE,  
 ADLABS, SYNDIBANK, HEXAWARE, MUTHOOTFIN, HCC,  
 29 JULY: LALPATHLAB, UPL, CROMPTON, VEDL, ICICIBANK, SPARC, LT, PVR,  
 GODREJCP, KTKBANK

**VISIT US AT: [WWW.INDIRATRADE.COM](http://WWW.INDIRATRADE.COM)**

#### **Disclaimer**

This report is for private circulation within the Indira Group. This report is strictly confidential and for information of the selected recipient only and may not be altered in any way, transmitted to, copied or distributed, in part or in whole, to any other person or to the media or reproduced in any form. This report should not be construed as an offer or solicitation to buy or sell any securities or any interest in securities. It does not constitute a personal recommendation or take into account the particular investment objectives, financial situations, or any such factor. The information, opinions estimates and forecasts contained here have been obtained from, or are based upon, sources we believe to be reliable, but no representation of warranty, express or implied, is made by us to their accuracy or completeness. Opinions expressed are our current opinions as of the date appearing on this material only and are subject to change without notice.