

## Top Stories This Week

- India's current account deficit (CAD) declined sharply to \$0.3 billion or 0.1% of GDP in Q4FY16 vs \$7.1 billion (1.3 per cent of GDP) in Q3FY16.
- India Trade deficit expanded in May'16 to \$6.27 billion from \$4.84 billion in April'16
- CPI for May 2016 rose to 5.76%, Vs 5.39% in April 2016. WPI rose 0.79% in May, vs 0.34% (MOM)
- Government levies 20 percent export duty on raw, refined and white sugar to keep domestic prices in check.
- International Finance Corp leads race to buy stake in IDBI Govt likely to cut holding to 50% from 74%
- PNB Releases list of wilful defaulters up to March 2016. Classifies 913 borrowers as wilful defaulters that owes Rs. 11486.15 cr
- Tata Power Company to buy 25 percent stake in Resurgent Power for USD 300 million: ET
- Government to impose anti-dumping duty of USD 1.22 per kg on import of chemical used for refrigerant industry: FE
- Global investors eye big stake in GMR Hyderabad Airport valued at Rs. 5000 cr: ToI
- SBI creates Rs 200 crore fund to invest in FinTech startups

## Weekly Indices Change

Index	Close	Prev Close	Chg. (%)
SENSEX	26625	26635	-0.04
NIFTY	8170	8170	0.00
MIDCAP	11359	11376	-0.15
SMLCAP	11435	11362	0.64
METAL	8352	8284	0.82
OIL&GAS	9421	9403	0.19
AUTO	19233	19308	-0.39
TECK	6090	6088	0.03
BANKEX	20243	20426	-0.90
IT	11323	11282	0.36
FMCG	8258	8155	1.26
HC	14844	14910	-0.44
PSU	6524	6411	1.76
CD	11503	11452	0.45
POWER	1955	1939	0.83
CG	14657	14705	-0.33
REALTY	1476	1438	2.64

## Global Indices

DOW	17675	17865	-1.06
NASDAQ	4800	4894	-1.92
FTSE	6021	6115	-1.54
NIKKEI	15599	16601	-6.04
HANGSENG	20169	21042	-4.15

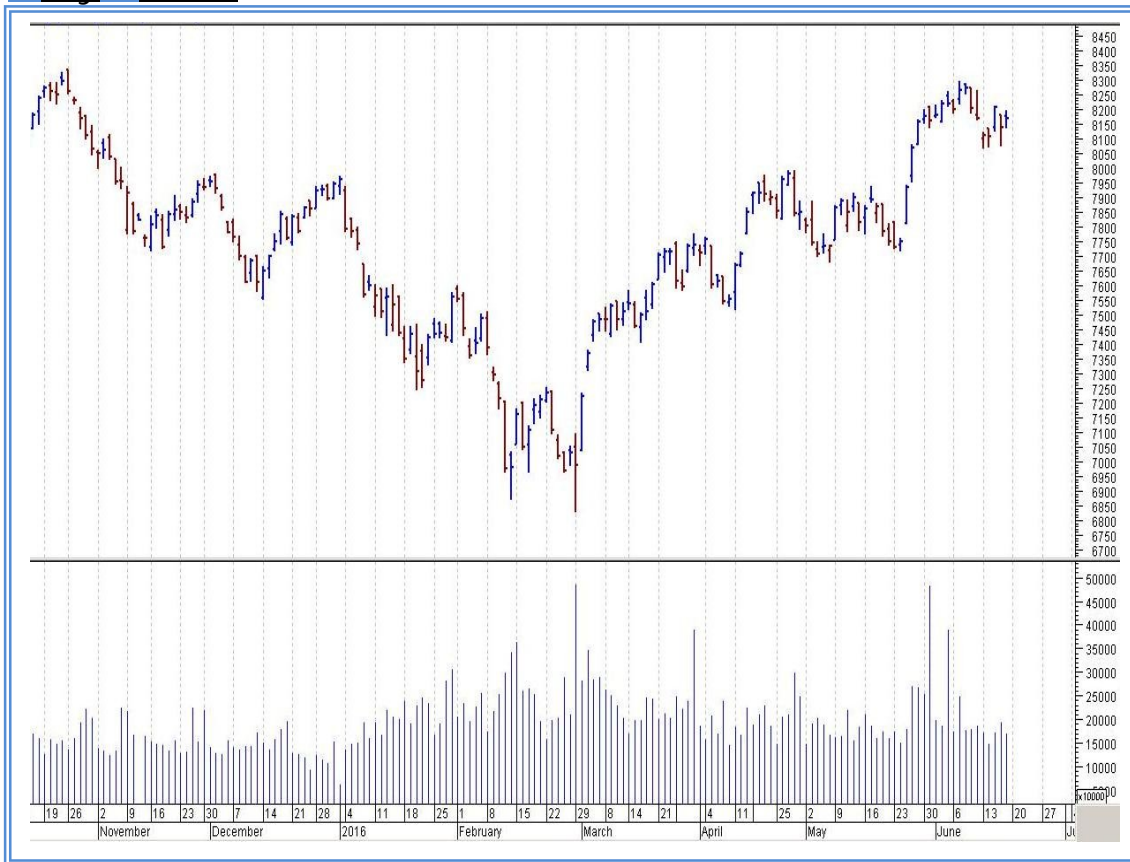
## Top Gainers Weekly

Scrip	Price	% Chg
State Bank Of Mysore	695.65	54.56
Upper Ganges Sugar	368.50	40.51
State Bank Of Bikaner	695.35	38.09
State Bank Of Travanco	546.50	37.48
ARSS Infrastructure	62.60	34.62

## Top Losers Weekly

Scrip	Price	% Chg
Mangalam Drugs	147.40	13.90
Patel Integrated Logist	103.10	11.77
Bharti Infratel Ltd.	338.65	9.57
IIFL Holdings	207.05	9.41
Dr. Lal Pathlabs Ltd	897.20	9.19

## Nifty Corner



Support & Resistance						
S3	S2	S1	Nifty	R1	R2	R3
7950	8000	8050	8170	8250	8350	8400
Moving Averages						
20DMA		50DMA		100DMA		200DMA
7845		7765		7575		7785

## Market Commentary

Key benchmark indices settled almost unchanged in a rangebound trade for the week ended 17 June 2016 as worries about a potential exit by the UK from the European Union in a referendum due next week and domestic data showing rise in wholesale and consumer price inflation offset reports indicating sooner than expected implementation of the Goods and Services Tax (GST), the biggest tax reform. The Bank of Japan and the US Federal Reserve deciding to keep interest rates unchanged also marred sentiment. The Sensex settled with small losses while the Nifty 50 index settled a tick higher for the week. The Sensex fell in three out of five sessions of the week. The Sensex fell 9.84 points or 0.03% to settle at 26,625.91. The Nifty rose 0.15 points to settle at 8,170.20. The BSE Mid-Cap index declined 0.15%. The fall in this index was higher than the Sensex's decline in percentage terms. The BSE Small-Cap index rose 0.63%, outperforming the Sensex. For the Next week Nifty likely to trade in the range between 8250 – 8350 in the upper side and 8050 – 8000 in the lower side.

### Stocks at 52 wk High

Scrip	Cmp
Asian Granito	189.40
Dabur India	315.15
HDIL	102.70
NHPC	25.30
Power Grid	157.05

### Stocks at 52 wk Low

Scrip	Cmp
Bharti Infratel	338.65
Global Offshore	154.75
MBL Infra	115.75
TIL	264.45
Usher Agro	24.90

### FII Activity

Date	Figures in crore
13/06	212.24
14/06	-113.36
15/06	-108.23
16/06	-156.75
17/06	31.96
NET	-134.14

### DII Activity

Date	Figures in crore
13/06	-597.83
14/06	-32.27
15/06	234.10
16/06	-163.00
17/06	-26.21
NET	-585.21

### Weekly Stock Idea

Scrip	B/S	Cmp	Tgt
VEDL	B	122	135
TATAELXSI	B	1775	1845
SBIN	B	213	225
KOTHARIPROD	B	168	195
HDIL	B	102	115

Buy on dips & Sell on rise with Stop-loss of 3%

### Volume Breakout Stocks

Scrip	Cmp
Zandu Realty	1544.30
Sobha	318.30
Rel Ind Infra	450.00
Jai Corp	76.45
Central Bank	105.10

### Week Ahead

MAJOR RESULTS/AGM MEETING THIS WEEK:

20 JUNE: DENABANK, SUPREMEIND, PSB

21 JUNE: TATAMETALI, ALBK, UCObANK, MAHABANK, EVERESTIND

22 JUNE: BIOCON, HINDUNILVR, CORPBANK

23 JUNE: PNB, INDIANB, INDUSINDBK, CENTRALBK, WELCORP, VEDL

24 JUNE: AJANTPHARM, MPSSLTD, POLARIS, JSWHL

**VISIT US AT: [WWW.INDIRATRADE.COM](http://WWW.INDIRATRADE.COM)**

#### **Disclaimer**

This report is for private circulation within the Indira Group. This report is strictly confidential and for information of the selected recipient only and may not be altered in any way, transmitted to, copied or distributed, in part or in whole, to any other person or to the media or reproduced in any form. This report should not be construed as an offer or solicitation to buy or sell any securities or any interest in securities. It does not constitute a personal recommendation or take into account the particular investment objectives, financial situations, or any such factor. The information, opinions estimates and forecasts contained here have been obtained from, or are based upon, sources we believe to be reliable, but no representation of warranty, express or implied, is made by us to their accuracy or completeness. Opinions expressed are our current opinions as of the date appearing on this material only and are subject to change without notice.