

Top Stories This Week

- April IIP at -0.8% vs 0.1% (MOM)
- L&T sells Gen Insurance Biz to HDFC Ergo for ₹ 551 C
- Bharat Forge North America Class 8 truck orders down 30% @ 14.1 k units YoY for May 2016
- Adani may abandon Australian coal mine project due to legal hurdles, delays
- National Pharmaceutical Pricing Authority cuts prices of cancer, diabetes by 25 percent: BS
- Anti-dumping duty imposed on chemical import from China and Russia
- Apex consumer panel slaps penalty of 12% per annum on DLF to be given to 50 buyers for delay in giving possession of their flats in its Panchkula project
- GMR Led Consortium bags order for Eastern Dedicated Freight Corridor project Order involves 2 packages worth 2281 cr on EPC mode
- Surya Roshni board approves merger of Surya Global Steel Tubes with self
- Government mulls up to 49 percent FDI without prior approval in Pharma sector: Tol
- ITC offers first product, dairy whitener, under newly unveiled dairy brand 'Sunfresh'

Weekly Indices Change

Index	Close	Prev Close	Chg. (%)
SENSEX	26635	26843	-0.77
NIFTY	8170	8220	-0.61
MIDCAP	11376	11394	-0.16
SMLCAP	11362	11148	1.92
METAL	8284	8064	2.73
OIL&GAS	9403	9399	0.04
AUTO	19308	19418	-0.57
TECK	6088	6290	-3.21
BANKEX	20426	20220	1.02
IT	11282	11689	-3.48
FMCG	8155	8193	-0.46
HC	14910	15056	-0.97
PSU	6411	6298	1.79
CD	11452	11442	0.09
POWER	1939	1877	3.30
CG	14705	14360	2.40
REALTY	1438	1412	1.84

Global Indices

DOW	17865	17807	0.33
NASDAQ	4894	4942	-0.97
FTSE	6115	6209	-1.51
NIKKEI	16601	16642	-0.25
HANGSENG	21042	20947	0.45

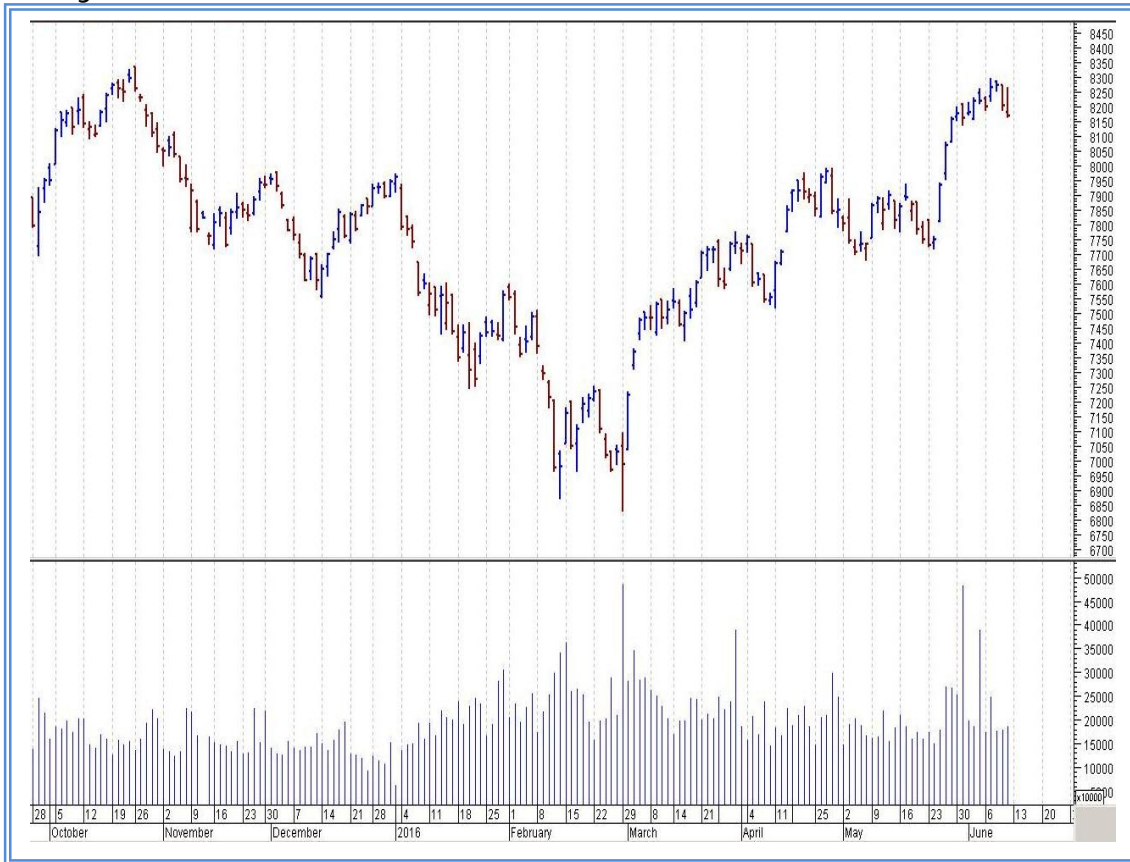
Top Gainers Weekly

Scrip	Price	% Chg
Tata Metaliks	348.10	27.56
ABG Shipyard	330.10	26.34
Gati Ltd.	159.85	19.16
Snowman Logistics Ltd	76.45	18.99
Jindal Drilling	194.90	17.69

Top Losers Weekly

Scrip	Price	% Chg
Store One Retail Ind	127.35	11.81
Tree House Education	49.35	11.44
Sunil Hitech Enginee	167.70	9.96
Mangalam Drugs	171.20	9.42
Piramal Enterprises	1341.10	7.48

Nifty Corner



Support & Resistance						
S3	S2	S1	Nifty	R1	R2	R3
8000	8050	8100	8170	8250	8350	8450
Moving Averages						
20DMA		50DMA		100DMA		200DMA
7845		7765		7575		7785

Market Commentary

Market declined last week as negative cues from global markets and concerns arising from higher global crude oil prices spooked investors. The rebound in crude oil prices has sparked concerns of its adverse impact on India's macroeconomic fundamentals. Until recently, lower global commodity prices led to optimism regarding India reining in its fiscal and current account deficit. With India importing about 80% of its crude requirements, there are now concerns that higher crude oil prices will result in widening of India's current account and fiscal deficit and increase fuel price inflation. The barometer index, the S&P BSE Sensex, fell 207.28 points or 0.77% to settle at 26,635.75. The Nifty 50 index fell 50.75 points or 0.62% to settle at 8,170.05. For the next week Nifty likely to trade in the range between 8250 – 8350 in the upper side and 8100 – 8050 in the lower side.

Stocks at 52 wk High

Scrip	Cmp
CCL Products	253.35
City Union Bank	109.65
Finolex Ind	416.00
JM Financial	54.35
JSW Steel	1418.70

Stocks at 52 wk Low

Scrip	Cmp
DB (Int) Stock	19.00
Vidhi Dyestuffs	54.65
Pudumjee Ind	9.50
--	--
--	--

FII Activity

Date	Figures in crore
06/06	28.30
07/06	499.73
08/06	529.16
09/06	234.20
10/06	201.32
NET	1492.71

DII Activity

Date	Figures in crore
06/06	-230.63
07/06	46.33
08/06	-257.76
09/06	-317.74
10/06	-165.62
NET	-925.42

Weekly Stock Idea

Scrip	B/S	Cmp	Tgt
GATI	B	160	185
SNOWMAN	B	76	95
PCJEWELLER	B	369	395
UCOBANK	B	36	39
ZEEL	B	458	485

Buy on dips & Sell on rise with Stop-loss of 3%

Volume Breakout Stocks

Scrip	Cmp
Sadbhav Infra	102.05
Jubilant Ind	169.00
Welspun Corp	74.80
Escorts	177.20
IDFC	51.05

Week Ahead

MAJOR RESULTS/AGM MEETING THIS WEEK:

13 JUNE: VIDEOIND,

14 JUNE: KANSAINER, TINPLATE, EQUITAS

15 JUNE: ORIENTBANK

16 JUNE: ICICIBANK, ASIANPAINT, UNITEDBNK, BANKBARODA, UPL

17 JUNE: UNIONBANK, XCHANGING

VISIT US AT: WWW.INDIRATRADE.COM

Disclaimer

This report is for private circulation within the Indira Group. This report is strictly confidential and for information of the selected recipient only and may not be altered in any way, transmitted to, copied or distributed, in part or in whole, to any other person or to the media or reproduced in any form. This report should not be construed as an offer or solicitation to buy or sell any securities or any interest in securities. It does not constitute a personal recommendation or take into account the particular investment objectives, financial situations, or any such factor. The information, opinions estimates and forecasts contained here have been obtained from, or are based upon, sources we believe to be reliable, but no representation of warranty, express or implied, is made by us to their accuracy or completeness. Opinions expressed are our current opinions as of the date appearing on this material only and are subject to change without notice.