

## Top Stories This Week

- April WPI inflation @ 0.34% vs - 0.85% (MOM)
- SBI Board Gives In Principle Approval To Merge 5 SBI Associate Banks With Self
- Coal India subsidiary Western coalfields limited slashes e-auction price by 20 percent
- Reliance Industries gets green nod for drilling project in TN
- Piramal Ent To Acquire 4 Brands From Pfizer For Consumer Product Business For Rs 110 Cr
- SAIL Co plans capex of Rs 6000 cr for FY17 For modernization and expansion
- Ajay Piramal, Shriram Group plan to combine financial businesses
- Unitech to Be Excluded from F&O from Jul 29
- Sobha approves buyback of shares of up to Rs 75.08 crore at Rs 330/share
- Government withdraws subsidy on sugar production
- Lupin Q4 cons profit at Rs. 812 cr vs Rs. 560 cr (YOY). Cons total income at Rs. 4091 cr vs Rs. 3054 cr (YOY).
- PNB net loss at Rs. 5367.14 cr vs profit of 306.56 cr (YOY). Gross NPA doubled to 12.9% vs 6.55% (YOY). Net NPA at 8.61% vs 4.06% (YOY)

## Weekly Indices Change

Index	Close	Prev Close	Chg. (%)
SENSEX	25301	25489	-0.74
NIFTY	7749	7814	-0.83
MIDCAP	11023	11156	-1.19
SMLCAP	10964	11113	-1.34
METAL	7461	7502	-0.55
OIL&GAS	9065	9170	-1.15
AUTO	18070	18222	-0.83
TECK	6038	6071	-0.54
BANKEX	18739	19039	-1.58
IT	11203	11215	-0.11
FMCG	7722	7730	-0.10
HC	15274	15432	-1.02
PSU	5980	6086	-1.74
CD	11673	11824	-1.28
POWER	1799	1835	-1.96
CG	13058	13362	-2.28
REALTY	1367	1338	2.17

## Global Indices

DOW	17500	17535	-0.20
NASDAQ	4769	4717	1.10
FTSE	6156	6138	0.29
NIKKEI	16736	16412	1.97
HANGSENG	19852	19719	0.67

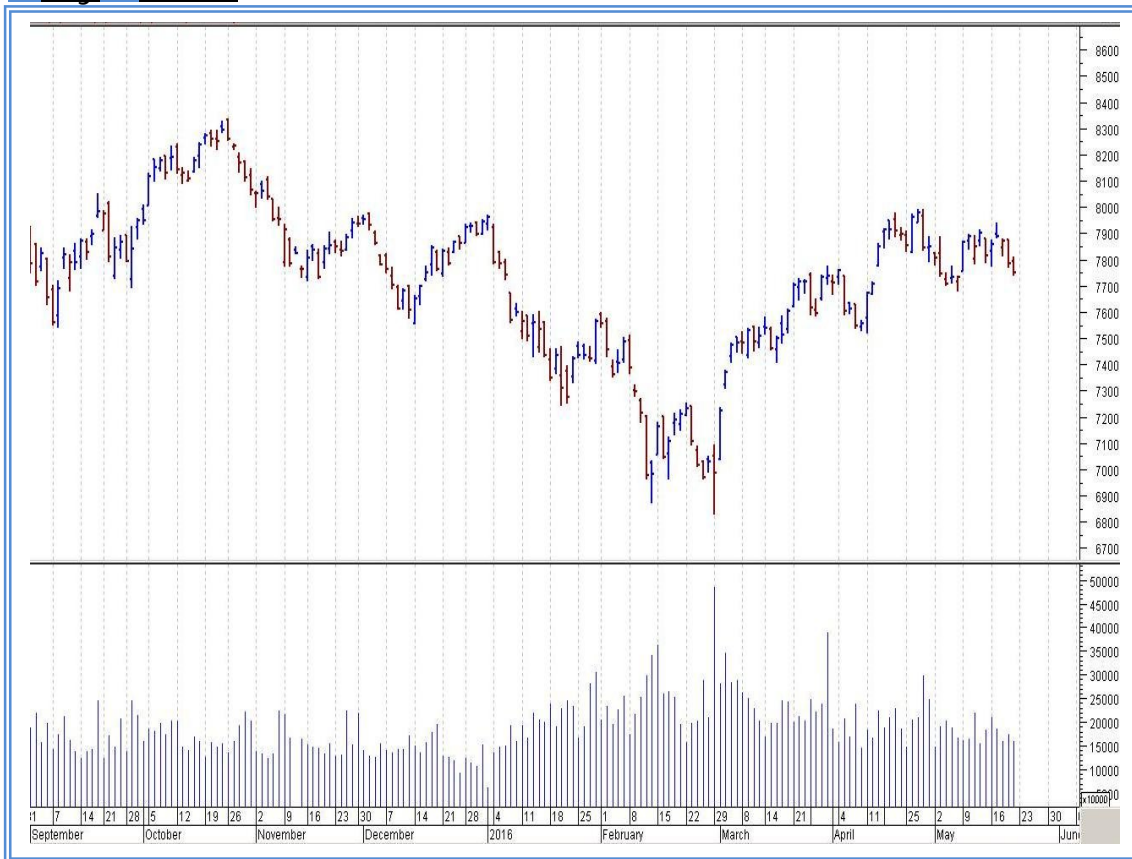
## Top Gainers Weekly

Scrip	Price	% Chg
Tata Metaliks	203.5	73.71
V2 Retail	66.35	24.34
Ess Dee Aluminium Ltd	84.45	17.70
Gati Ltd.	131.35	14.63
Indiabulls Real Estate	91.25	14.28

## Top Losers Weekly

Scrip	Price	% Chg
Diamond Power Infra	47.50	19.49
Tourism Finance	36.35	17.10
Torrent Power Ltd.	194.95	14.27
Bank of Baroda	135.05	12.93
Eros International	180.75	12.11

## Nifty Corner



Support & Resistance						
S3	S2	S1	Nifty	R1	R2	R3
7550	7600	7650	7749	7850	7950	8050
Moving Averages						
20DMA	50DMA	100DMA	200DMA			
7785	7525	7565	7855			

## Market Commentary

The market declined last week, extending last week's retreat, as a sell-off in global stocks sapped the demand for riskier assets. Data showing slowdown in growth in manufacturing sector in April 2016 also weighed on the domestic bourses. Nifty closed in red in three out of five trading sessions. For the next week Nifty likely to trade in the range between 7850 – 7950 in the upper side and 7650 – 7600 in the lower side.

### Stocks at 52 wk High

Scrip	Cmp
Edelweiss	68.30
Pidilite Ind	653.70
PVR	870.60
Store One	147.50
Tata Metaliks	203.50

### Stocks at 52 wk Low

Scrip	Cmp
BEML	862.40
Bharat Forge	718.60
Jindal Photo	80.80
Thermax	705.75
Tourism Finance	36.35

### FII Activity

Date	Figures in crore
16/05	-79.84
17/05	-224.97
18/05	-250.70
19/05	-764.58
20/05	-743.86
NET	-2063.95

### DII Activity

Date	Figures in crore
16/05	-127.91
17/05	384.67
18/05	239.91
19/05	1483.65
20/05	597.49
NET	2577.81

### Weekly Stock Idea

Scrip	B/S	Cmp	Tgt
SAKUMA	B	77	95
ITC	B	330	365
ADANI PORTS	B	178	195
MARUTI	B	3944	4065
HAVELLS	B	365	385

Buy on dips & Sell on rise with Stop-loss of 3%

### Volume Breakout Stocks

Scrip	Cmp
Adlabs Ent	85.45
Pidilite Ind	653.70
PVR	870.60
Karnataka Bank	119.95
Edelweiss Fin	68.30

### Week Ahead

MAJOR RESULTS/AGM MEETING THIS WEEK:

23 MAY: DISHTV, TATAPOWER, VRLLOG, TORNTPHARM, NFL, ENGINEERSIN, CUB, ABAN

24 MAY: TECHM, TATAGLOBAL, WONDERLA, NCC, JUBILANT, MOIL, PFC, J&KBANK, BAJFINANCE, BAJAJFINSV, COLPAL, CIPLA, AMARAJABAT,

25 MAY: TATASTEEL, THERMAX, TVTODAY, LT, PFC, GAIL, ESCORTS, BAJAJ-AUTO, CONCOR, ASHOKLEY, APOLLOHOSP, BOSCHLTD,

26 MAY: ADANITRANS, UNIONBANK, TWL, SCI, RCF, TATACHEM, POWERGRID, MCDOWELL-N, JETAIRWAYS, ONGC, BPCL,

27 MAY: HINDPETRO, SBIN, SUNTV, RPOWER, RECLTD, SJVN, NMDC, OIL, IOC, BHEL. BEL. BEML. CROMPGREAV. CANBK

**VISIT US AT: [WWW.INDIRATRADE.COM](http://WWW.INDIRATRADE.COM)**

#### **Disclaimer**

This report is for private circulation within the Indira Group. This report is strictly confidential and for information of the selected recipient only and may not be altered in any way, transmitted to, copied or distributed, in part or in whole, to any other person or to the media or reproduced in any form. This report should not be construed as an offer or solicitation to buy or sell any securities or any interest in securities. It does not constitute a personal recommendation or take into account the particular investment objectives, financial situations, or any such factor. The information, opinions estimates and forecasts contained here have been obtained from, or are based upon, sources we believe to be reliable, but no representation of warranty, express or implied, is made by us to their accuracy or completeness. Opinions expressed are our current opinions as of the date appearing on this material only and are subject to change without notice.