

## Top Stories This Week

- Telecom Commission Accepts TRAI's Recos On Spectrum Auction Reserve Price.
- FIPB Clears Proposals Of Wockhardt, Aurobindo Pharma: Govt Official.
- Airtel signs pact with GBI to increase co's reach to new countries in Middle East
- Coal India : April Coal Production At 40.09 mt Vs Target Of 44.48 mt. April Coal Offtake At 42.45 mt Vs Target Of 51.46 mt.
- PTC India emerged as successful bidder to supply power to Uttarakhand and Kerela during peak summer months
- NALCO To buyback 25 percent of its shares form the Govt
- JSW Energy To Acquire JSPL's 1,000 MW Chhattisgarh Plant.
- IFCI board approves selling remaining 3.05% stake held by co in NSE.
- Adani Ports Q4 Net Profit Up 38.3 percent At Rs 914 Cr Vs Rs 661 Cr (YoY) Total Income Up 15.8 percent At Rs 1,947 Cr Vs Rs 1,681 Cr (YoY)
- Idea (ET) Co may spend USD 1.3bn to buy spectrum in July auction.
- MOIL : Maharashtra grants co mining lease for 53.75 hectares in Nagpur

## Weekly Indices Change

Index	Close	Prev Close	Chg. (%)
SENSEX	25228	25606	-1.48
NIFTY	7733	7849	-1.48
MIDCAP	10965	11042	-0.70
SMLCAP	10899	11020	-1.10
METAL	7672	7958	-3.59
OIL&GAS	9236	9356	-1.28
AUTO	18272	18469	-1.07
TECK	5969	6121	-2.48
BANKEK	18540	19114	-3.00
IT	11042	11330	-2.54
FMCG	7619	7697	-1.01
HC	15363	15582	-1.41
PSU	6111	6268	-2.50
CD	11714	11787	-0.62
POWER	1835	1846	-0.60
CG	13150	13202	-0.39
REALTY	1334	1356	-1.62

## Global Indices

DOW	17740	17773	-0.19
NASDAQ	4736	4775	-0.82
FTSE	6125	6241	-1.86
NIKKEI	16106	16666	-3.36
HANGSENG	20109	21067	-4.55

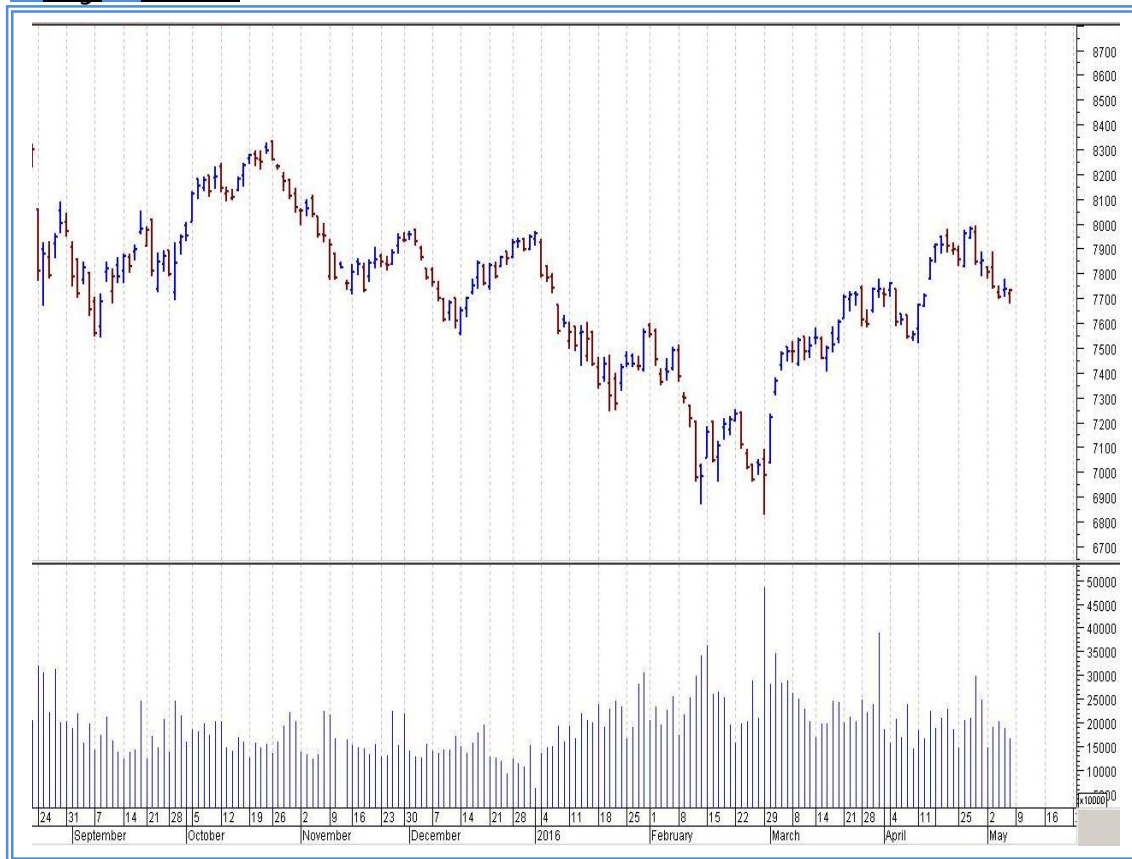
## Top Gainers Weekly

Scrip	Price	% Chg
HOV Services	108.95	31.98
CCL Products India	224.85	15.93
Indiabulls Real Estate	76.40	12.93
KRBL	255.00	11.79
Atul	1895.55	10.01

## Top Losers Weekly

Scrip	Price	% Chg
ABG Shipyard	30.65	32.79
Adani Enterprises	76.80	11.57
Atul Auto	467.00	11.07
Godfrey Phillips India	807.65	10.07
Alstom T&D India	342.35	9.88

## Nifty Corner



Support & Resistance						
S3	S2	S1	Nifty	R1	R2	R3
7450	7550	7650	7733	7850	7950	8050
Moving Averages						
20DMA	50DMA	100DMA	200DMA			
7785	7525	7565	7855			

## Market Commentary

The market declined last week, extending last week's retreat, as a sell-off in global stocks sapped the demand for riskier assets. Data showing slowdown in growth in manufacturing sector in April 2016 also weighed on the domestic bourses. On the global front, Japanese stocks edged lower as the yen surged to 1-1/2-year high against the dollar. The stronger yen makes Japanese exports less competitive and cuts into the value of repatriated earnings. Yen firmed up after the Bank of Japan's (BOJ) decision to keep its policies unchanged. For next week Nifty likely to trade in the range between 7850 – 7950 in the upper side and 7650 – 7550 in the lower side.

Stocks at 52 wk High

Scrip	Cmp
Indiabulls Real	76.30
KRBL	255.85
Petronet LNG	279.75
UPL	592.90
V-Guard Ind	1265.15

Stocks at 52 wk Low

Scrip	Cmp
Alstom T&D	342.35
HCL Tech	724.60
Ipca Labs	476.45
PC Jeweller	334.55
Lambodhara Text	118.70

FII Activity

Date	Figures in crore
02/05	434.93
03/05	-755.28
04/05	-66.45
05/05	-388.51
06/05	27.71
NET	-747.60

DII Activity

Date	Figures in crore
02/05	-109.56
03/05	484.64
04/05	-78.80
05/05	251.79
06/05	179.80
NET	727.87

Weekly Stock Idea

Scrip	B/S	Cmp	Tgt
HDIL	B	82	88
IBREALEST	B	76	85
DLF	B	125	135
IBWSL	B	16	18.5
MOTHERSUMI	B	257	275

Buy on dips & Sell on rise with Stop-loss of 3%

Volume Breakout Stocks

Scrip	Cmp
Hind Composites	1054.75
Birla Corp	400.65
NIIT Tech	484.65
Emami	1039.20
Talwalkars	202.10

Week Ahead

MAJOR RESULTS/AGM MEETING THIS WEEK:

09 MAY: HINDUNILVR, CAREERP, AIL, DEEPAKNTR, 8KMILES

10 MAY: ZEEL, KSCL, CENTURYPLY, NIITLTD, REPCOHOME, SRF, SMLISUZU

11 MAY: ASIANPAINT, CHAMBLFERT, APOLLOTYRE, QUICKHEAL, HAVELLS, KOTAKBANK

12 MAY: MRPL, MAHABANK, DRREDDY, ARVIND, ITDCEM

**VISIT US AT: [WWW.INDIRATRADE.COM](http://WWW.INDIRATRADE.COM)**

**Disclaimer**

This report is for private circulation within the Indira Group. This report is strictly confidential and for information of the selected recipient only and may not be altered in any way, transmitted to, copied or distributed, in part or in whole, to any other person or to the media or reproduced in any form. This report should not be construed as an offer or solicitation to buy or sell any securities or any interest in securities. It does not constitute a personal recommendation or take into account the particular investment objectives, financial situations, or any such factor. The information, opinions estimates and forecasts contained here have been obtained from, or are based upon, sources we believe to be reliable, but no representation of warranty, express or implied, is made by us to their accuracy or completeness. Opinions expressed are our current opinions as of the date appearing on this material only and are subject to change without notice.