

Top Stories This Week

- March WPI inflation @ -0.85% vs -0.91% (MOM)
- HDFC Board Approves IPO Process for HDFC Standard Life. Parent HDFC will sell 10% stake in Insurance arm
- TCS Q4FY16 (QoQ) \$ Rev up 1.5% at \$4207m vs \$4145m. Re Rev up 4% at Rs 28448.6 cr vs Rs 27364 cr. PAT up 3.8% at Rs 6341.2 cr vs Rs 6110 cr
- Bharti Airtel may sell 5% in Infratel to raise up to Rs 3700 cr to cut debt ahead of upcoming spectrum (ET)
- 2 TATA group cos slapped a fine of \$940m in a trade secret lawsuit by US grand Jury. Lawsuit filed by Epic Systems against TCS and Tata American Intl corp
- JBF Industries Arm enters into a Long Term Agreement with ONGC Mangalore Petrochem for supply of Paraxylene
- BEML signs MoU with Dredging Corp for development and manufacture of spares for dredgers.
- The U-K And Welsh Governments Offer To Partly Nationalise Tata Steel's U-K Assets. UK ready to buy up to 25% stake in business, provide debt relief.
- RIL Q4 Standalone net profit @ Rs. 7320 cr. Gross refining margins (GRMs) stood at USD 10.80 per barrel. Turnover down 8.9% to Rs. 64589 cr (YOY)

Weekly Indices Change

| Index | Close | Prev Close | Chg. (%) |
|---------|-------|------------|----------|
| SENSEX | 25838 | 25626 | 0.83 |
| NIFTY | 7899 | 7850 | 0.62 |
| MIDCAP | 11018 | 10916 | 0.93 |
| SMLCAP | 11078 | 10943 | 1.23 |
| METAL | 8020 | 7656 | 4.75 |
| OIL&GAS | 9458 | 9396 | 0.66 |
| AUTO | 18700 | 18748 | -0.26 |
| TECK | 6102 | 6073 | 0.48 |
| BANKEX | 19035 | 18542 | 2.66 |
| IT | 11345 | 11283 | 0.55 |
| FMCG | 7767 | 7820 | -0.68 |
| HC | 15588 | 15494 | 0.61 |
| PSU | 6354 | 6186 | 2.72 |
| CD | 11936 | 11693 | 2.08 |
| POWER | 1888 | 1872 | 0.85 |
| CG | 13365 | 13230 | 1.02 |
| REALTY | 1307 | 1281 | 2.03 |

Global Indices

| | | | |
|----------|-------|-------|-------|
| DOW | 18003 | 17897 | 0.59 |
| NASDAQ | 4906 | 4938 | -0.65 |
| FTSE | 6310 | 6343 | -0.52 |
| NIKKEI | 17572 | 16848 | 4.30 |
| HANGSENG | 21484 | 21316 | 0.79 |

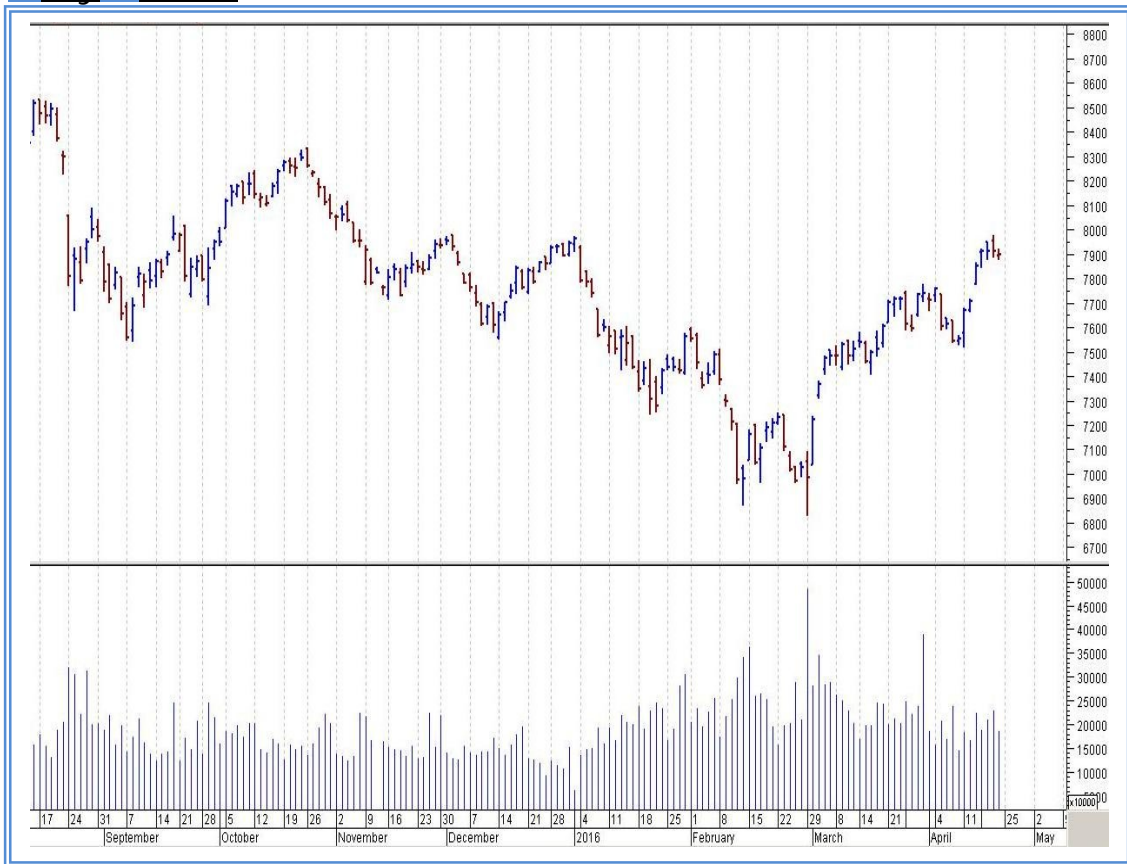
Top Gainers Weekly

| Scrip | Price | % Chg |
|--------------------|--------|-------|
| Amtek Auto | 39.35 | 28.59 |
| Harrisons Malyalam | 72.30 | 20.80 |
| Bodal Chemicals | 92.75 | 13.59 |
| DCB Bank | 98.05 | 11.55 |
| Bank Of Baroda | 161.75 | 9.11 |

Top Losers Weekly

| Scrip | Price | % Chg |
|---------------------------|--------|-------|
| Emkay Global Financial | 54.25 | 7.26 |
| Gulf Oil Lubricants India | 524.80 | 6.89 |
| Bharti Infratel | 371.70 | 6.21 |
| Apollo Tyres | 62.85 | 6.06 |
| Cyient | 454.45 | 6.02 |

Nifty Corner



| Support & Resistance | | | | | | |
|----------------------|------|-------|-------|--------|------|--------|
| S3 | S2 | S1 | Nifty | R1 | R2 | R3 |
| 7650 | 7750 | 7800 | 7899 | 7950 | 8050 | 8150 |
| Moving Averages | | | | | | |
| 20DMA | | 50DMA | | 100DMA | | 200DMA |
| 7385 | | 7365 | | 7605 | | 7905 |

Market Commentary

Key benchmark indices edged higher in a truncated trading week, building on strong gains registered during the last week on hopes that Reserve Bank of India may further cut policy rates if the monsoon is good and inflation continues on a downward path. Last week, the weather office predicted good rains during the June-September 2016 southwest season. The Sensex gained in three out of four sessions of the week ended Friday, 22 April 2016. The barometer index, the S&P BSE Sensex, rose 0.82% to settle at 25838 in the week. The gains for the Nifty 50 index were lower than the Sensex's gains in percentage terms. The Nifty rose 0.62% to settle at 7899. The BSE Mid-Cap index rose 0.93%. The BSE Small-Cap index gained 1.24%. Both these indices outperformed the Sensex. For the next week Nifty likely to trade in the range between 7950 – 8050 in the upper side and 7800 – 7750 in the lower side.

Stocks at 52 wk High

| Scrip | Cmp |
|-----------------|--------|
| Bodal Chemicals | 93.00 |
| ITD Cementation | 124.60 |
| JagranPrakashan | 170.50 |
| Marico | 259.00 |
| Shalimar Paints | 143.45 |

Stocks at 52 wk Low

| Scrip | Cmp |
|-----------------|--------|
| Global Offshore | 176.95 |
| KDDL | 186.55 |
| United Brewerie | 754.85 |
| Vaibhav Global | 313.45 |
| Zenithexpo | 47.25 |

FII Activity

| Date | Figures in crore |
|-------|------------------|
| 18/04 | 977.98 |
| 19/04 | -- |
| 20/04 | -80.10 |
| 21/04 | 805.42 |
| 22/04 | 191.07 |
| NET | 1894.37 |

DII Activity

| Date | Figures in crore |
|-------|------------------|
| 18/04 | -313.22 |
| 19/04 | -- |
| 20/04 | -300.09 |
| 21/04 | 65.72 |
| 22/04 | -168.64 |
| NET | -716.23 |

Weekly Stock Idea

| Scrip | B/S | Cmp | Tgt |
|------------|-----|-----|------|
| FORTIS | B | 180 | 195 |
| COALINDIA | B | 288 | 305 |
| HDIL | B | 83 | 87.5 |
| DLF | B | 123 | 135 |
| RELCAPITAL | B | 400 | 425 |

Buy on dips & Sell on rise with Stop-loss of 3%

Volume Breakout Stocks

| Scrip | Cmp |
|------------------|--------|
| Gulf Oil Corp | 148.70 |
| JK Bank | 72.85 |
| Bhushan | 42.75 |
| Eros Intern | 183.40 |
| Corporation Bank | 41.05 |

Week Ahead

MAJOR RESULTS/AGM MEETING THIS WEEK:

25 APR: ULTRACEMCO, SBT, TATASPONGE, IBULHSGFIN, IBREALEST

26 APR: MARUTI, BIOCON, AXISBANK, IDFCBANK, RALLIS

27 APR: KPIT, CEATLTD, JSWENERGY, YESBANK, GATI, BHARTIARTL, INOXLEISURE

28 APR: HCLTECH, VEDL, AMBUJACEM, IDEA, ACC, DABUR, TATAELXSI, HCC

29 APR: IDFC, SBBJ, INDIGO, ICICIBANK, GICHSGFIN, AJANTPHARM

VISIT US AT: WWW.INDIRATRADE.COM

Disclaimer

This report is for private circulation within the Indira Group. This report is strictly confidential and for information of the selected recipient only and may not be altered in any way, transmitted to, copied or distributed, in part or in whole, to any other person or to the media or reproduced in any form. This report should not be construed as an offer or solicitation to buy or sell any securities or any interest in securities. It does not constitute a personal recommendation or take into account the particular investment objectives, financial situations, or any such factor. The information, opinions estimates and forecasts contained here have been obtained from, or are based upon, sources we believe to be reliable, but no representation of warranty, express or implied, is made by us to their accuracy or completeness. Opinions expressed are our current opinions as of the date appearing on this material only and are subject to change without notice.