

Top Stories This Week

- December IIP -1.3% Vs -3.2% (MOM). APR-DEC IIP @ 3.1% vs 2.6%. January CPI Inflation at 5.69% Vs 5.61% (MOM)
- Govt Sets Minimum Import Price For Some Steel Pdts To Reduce Inbound Shipments.
- Coal India Signs MoU With Indian Oil Corp For Manufacturing Bulk Explosives
- January Auto Sales: Tata Motors JLR total sales up 24 percent at 46,016 units versus 37,137 units (YoY)
- Cipla Q3 -Consolidated net profit up 4.7 percent at Rs 343.2 crore versus Rs 327.8 crore (YoY) - Consolidated total income up 12.3 percent at Rs 3,106.5 crore versus Rs 2,765 crore (YoY)
- Ambuja Cements Q4 -Net profit down 66.5 percent at Rs 110 crore versus Rs 328.6 crore (YoY) -Total income down 1.1 percent at Rs 2,379.2 crore versus Rs 2,404.8 crore
- Hero MotoCorp Q3 -Net Profit At `796 Cr Vs `583 Cr (YoY). Total Income At `7,295 Cr Vs `6,839 Cr (YoY)
- Coal India Q3 -Cons Net Profit Up 14% At `3,718 Cr Vs `3,262.5 Cr (YoY) -Cons Net Sales Up 12% At `18,971.5 Cr Vs `17763 Cr (YoY)
- BHEL Q3 -Net Loss At `1,102 Cr Vs Profit Of `212.6 Cr (YoY) -Total Income Down 14% At `5,325.6 Cr Vs `6,198 Cr (YoY)

Weekly Indices Change

Index	Close	Prev Close	Chg. (%)
SENSEX	22986	24616	-6.62
NIFTY	6980	7489	-6.80
MIDCAP	9615	10335	-6.97
SMLCAP	9682	10569	-8.39
METAL	6332	6898	-8.21
OIL&GAS	8178	8898	-8.09
AUTO	15861	16827	-5.74
TECK	5570	5953	-6.43
BANKEKX	15854	17173	-7.68
IT	10295	11196	-8.05
FMCG	7091	7544	-6.00
HC	15110	16039	-5.79
PSU	5521	6044	-8.65
CD	11753	12242	-3.99
POWER	1617	1733	-6.69
CG	11251	12337	-8.80
REALTY	1035	1167	-11.31

Global Indices

DOW	15973	16204	-1.43
NASDAQ	4337	4363	-0.60
FTSE	5707	5848	-2.41
NIKKEI	14952	16819	-11.10
HANGSENG	18319	19288	-5.02

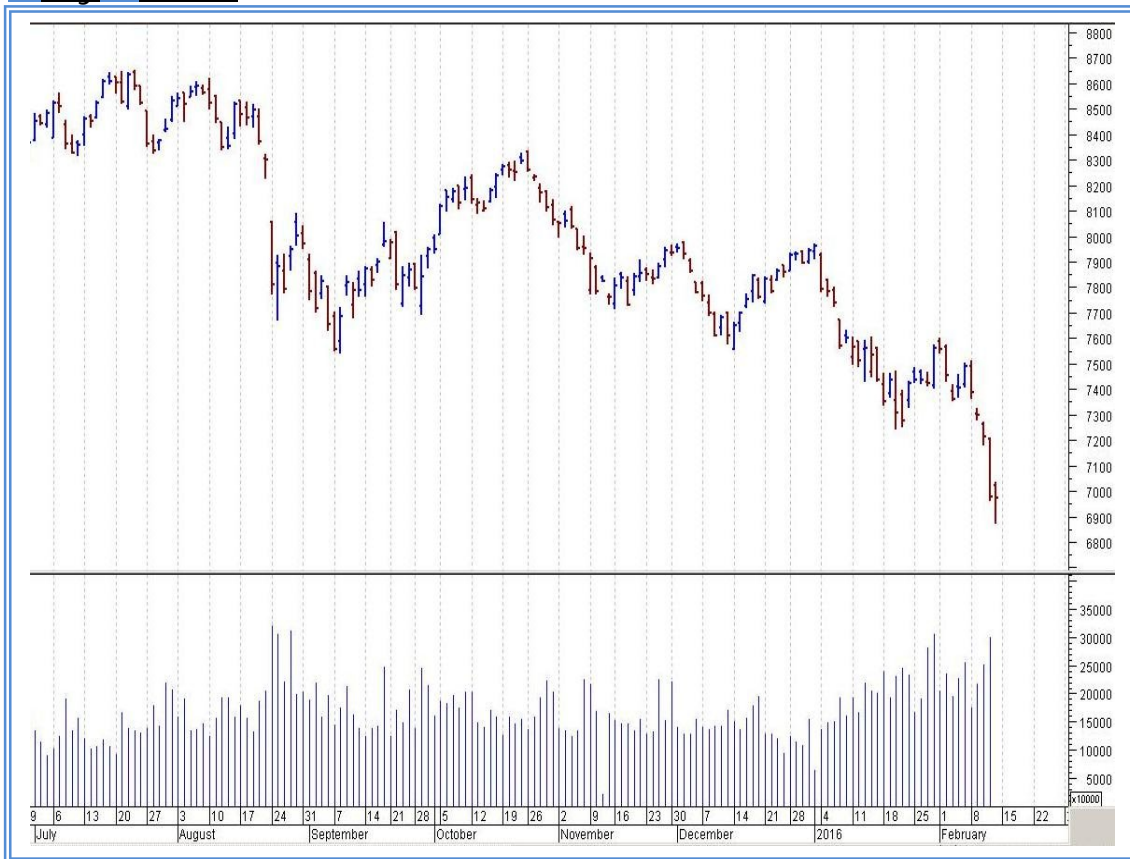
Top Gainers Weekly

Scrip	Price	% Chg
NDTV	101.95	9.92
Bharti Airtel	324.55	8.26
Bharti Infratel Ltd.	384.10	7.83
Apollo Tyres	148.05	6.90
Idea Cellular Ltd.	109.65	5.94

Top Losers Weekly

Scrip	Price	% Chg
Wockhardt Ltd.	762.10	33.31
Arvind Infrastructur	71.10	30.60
Just Dial	415.35	26.94
Cox & Kings	158.85	24.61
AdlabsEntertainment	79.65	24.61

Nifty Corner



Support & Resistance						
S3	S2	S1	Nifty	R1	R2	R3
6825	6895	6925	6980	7115	7225	7255
Moving Averages						
20DMA	50DMA	100DMA	200DMA			
7365	7595	7795	8025			

Market Commentary

Indian equity markets registered sharp losses in the week ended Friday, 12 February 2016, on weak global cues. Investors were spooked over the prospects of slowing global growth. The barometer index, the S&P BSE Sensex, fell below the psychologically important 23,000 level and the 50-unit Nifty 50 index settled below the psychologically important 7,000 level. The Sensex and the Nifty declined in four out of five trading sessions in the week ended Friday, 12 February 2016. Federal Reserve Chairwoman Janet Yellen's semiannual Monetary Policy Report to the Congress on Wednesday, 10 February 2016, where she kept options open for more interest rate hikes from the US central bank spooked investors' sentiment amid concerns that global financial market turbulence could hurt US growth. The Sensex tumbled 6.62% to settle at 22,986. The Nifty slumped 6.78% to settle at 6,980. For the next week Nifty likely to trade in the range between 7115 – 7225 in the upper side and 6925 – 6895 in the lower side.

Stocks at 52 wk High

Scrip	Cmp
TIPSINDLTD	62.10
--	--
--	--
--	--
--	--

Stocks at 52 wk Low

Scrip	Cmp
AB Nuvo	746.10
ACC	1221.05
Bank of Baroda	113.70
BHEL	104.45
Colgate	835.25

FII Activity

Date	Figures in crore
08/02	-84.56
09/02	-680.70
10/02	-751.33
11/02	-1112.66
12/02	-398.37
NET	-3027.62

DII Activity

Date	Figures in crore
08/02	279.49
09/02	-174.14
10/02	196.92
11/02	1222.12
12/02	545.07
NET	2069.46

Weekly Stock Idea

Scrip	B/S	Cmp	Tgt
CAIRN	B	119	135
IDEA	B	109	125
HINDUNILVR	B	812	845
IDBI	B	51	55
PFOCUS	B	48	55

Buy on dips & Sell on rise with Stop-loss of 3%

Volume Breakout Stocks

Scrip	Cmp
PC Jeweller	377.35
BHEL	104.45
Can Fin Homes	867.35
SMS Pharma	83.50
M&M	1165.25

Week Ahead

MAJOR RESULTS/AGM MEETING THIS WEEK:

15 FEB: VALECHAENG, BRFL, STINDIA

16 FEB: PAPERPROD, NET4

17 FEB: RAIN

VISIT US AT: WWW.INDIRATRADE.COM

Disclaimer

This report is for private circulation within the Indira Group. This report is strictly confidential and for information of the selected recipient only and may not be altered in any way, transmitted to, copied or distributed, in part or in whole, to any other person or to the media or reproduced in any form. This report should not be construed as an offer or solicitation to buy or sell any securities or any interest in securities. It does not constitute a personal recommendation or take into account the particular investment objectives, financial situations, or any such factor. The information, opinions estimates and forecasts contained here have been obtained from, or are based upon, sources we believe to be reliable, but no representation of warranty, express or implied, is made by us to their accuracy or completeness. Opinions expressed are our current opinions as of the date appearing on this material only and are subject to change without notice.