

## Top Stories This Week

- The Union Cabinet approves the Real Estate (Regulation & Development) Bill, 2015
- Cabinet Approves Policy Measures To Promote Shipbuilding Industry.
- SBI Bank is likely to sell 15% stake in NSE and has kick started the process
- Heavy Ind Minister Says No Plans For Divestment Of BHEL
- Religare Enterprises Co Sells Its Stake In Life Insurance JV Aegon Religare Life Insurance for 971.5 Cr To BCCL.
- Maruti Suzuki To Hike Prices Of Its Vehicles By Up To `20,000 From January to offset rising cost.
- Textile ministry recommends reduction in excise duty for man-made fibre to 6% from 12%
- Cipla Says: Board Approves Transfer Of Consumer Health Biz To Cipla Health For `16 Cr
- Aurobindo Pharma Gets US FDA Approval For Oral Contraceptive Levonorgestrel Tablet (OTC)
- CCEA Approves Mandatory Use Of Jute In Packaging For Certain Commodities (Cheviot / Gloster in focus
- Infosys Co invests \$4mn in Israeli start-up CloudEndure. Start up provides cloud migration solutions and clud based disaster recovery

## Weekly Indices Change

Index	Close	Prev Close	Chg. (%)
SENSEX	25044	25638	-2.32
NIFTY	7610	7781	-2.20
MIDCAP	10576	10935	-3.28
SMLCAP	11213	11557	-2.98
METAL	6902	7280	-5.19
OIL&GAS	9008	9303	-3.17
AUTO	17822	18480	-3.56
TECK	5808	5810	-0.03
BANKEX	18651	19325	-3.49
IT	10751	10694	0.53
FMCG	7659	7837	-2.27
HC	16141	16506	-2.21
PSU	6462	6773	-4.59
CD	11857	12112	-2.11
POWER	1811	1863	-2.79
CG	13845	14332	-3.40
REALTY	1266	1335	-5.17

## Global Indices

DOW	17265	17846	-3.26
NASDAQ	4933	5142	-4.06
FTSE	5952	6238	-4.58
NIKKEI	19230	19504	-1.40
HANGSENG	21464	22235	-3.47

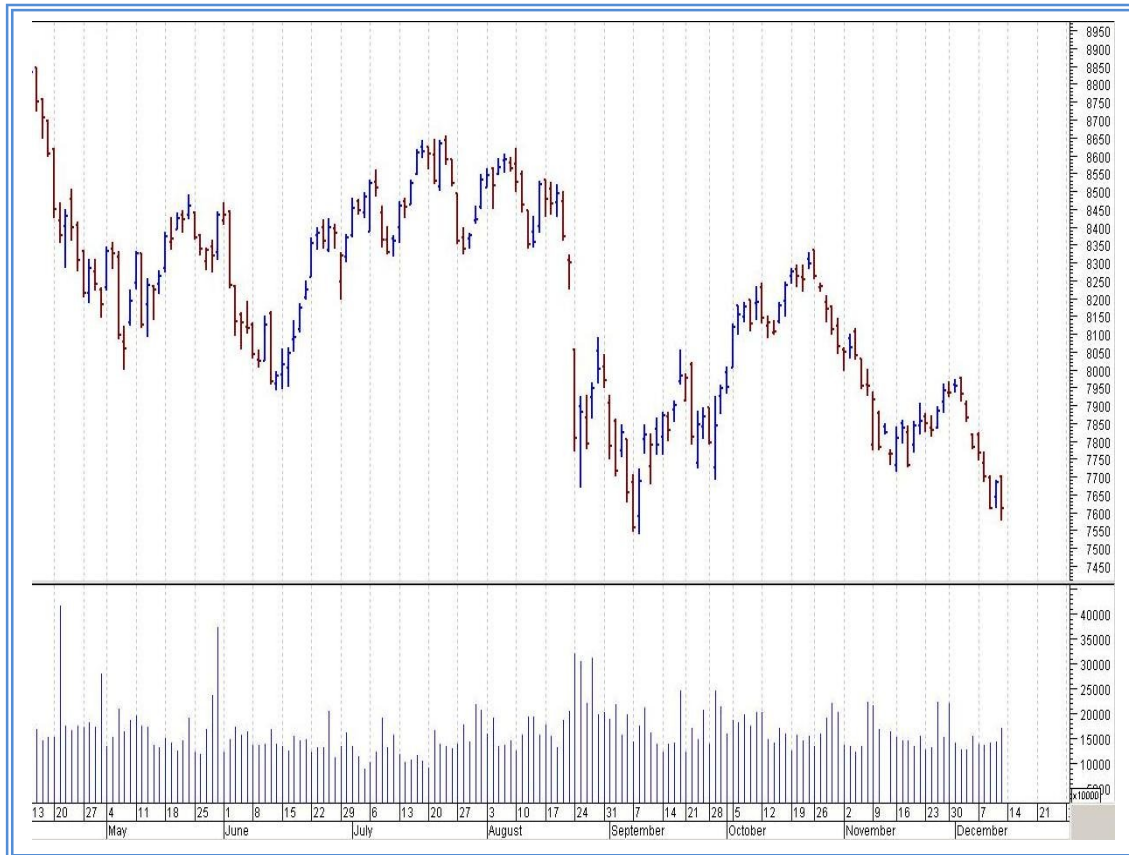
## Top Gainers Weekly

Scrip	Price	% Chg
Metalyst Forgings	77.95	28.20
Empee Distilleries	98.65	25.50
Hitech Plast	159.95	23.70
Transformers & Recti	231.00	22.80
Jindal Stainless	27.05	12.47

## Top Losers Weekly

Scrip	Price	% Chg
IDFC LTD	44.9	15.52
Union Bank of India	146.9	14.25
Adani Power	26.20	13.53
Vedanta	83.45	11.46
Adani Enterprises Ltd	72.90	12.37

## Nifty Corner



Support & Resistance						
S3	S2	S1	Nifty	R1	R2	R3
7400	7450	7500	7610	7700	7800	7900
Moving Averages						
20DMA		50DMA		100DMA		200DMA
7905		7995		8145		8305

## Market Commentary

Key benchmark indices edged lower in the week ended Friday, 11 December 2015 on prospects of delayed in passing of GST bill and increase in interest rates in the United States. The barometer index, the S&P BSE Sensex, close near the psychological 25,000 mark during the week. The Sensex and the Nifty, both, settled at their lowest level in more than two weeks. Key indices edged lower in four out of five trading sessions during the week. For today's next week nifty likely to trade in the range between in the upper side and in the lower side.

Stocks at 52 wk High

Scrip	Cmp
APL Apollo	612.85
Heritage Foods	524.55
Hitech Plast	159.95
Kalyani Steels	165.75
Navkar Corp	210.00

Stocks at 52 wk Low

Scrip	Cmp
Adani Ports	241.15
Bharti Airtel	309.55
Dr Reddys Labs	2969.00
ICICI Bank	249.30
Larsen	1285.75

FII Activity

Date	Figures in crore
07/12	-65.04
08/12	-518.46
09/12	-527.41
10/12	-580.28
11/12	253.73
NET	-1437.46

DII Activity

Date	Figures in crore
07/12	-54.90
08/12	590.32
09/12	864.71
10/12	410.92
11/12	292.88
NET	2103.93

Weekly Stock Idea

Scrip	B/S	Cmp	Tgt
GATI	B	168	185
SNOWMAN	B	85	95
TEXRAIL	B	147	165
WIPRO	B	566	585
GODREJIND	B	360	375

Buy on dips & Sell on rise with Stop-loss of 3%

Volume Breakout Stocks

Scrip	Cmp
Texmaco Rail	147.60
Tata Sponge Iron	471.55
Kalyani Steels	165.75
Titagarh Wagons	154.20
Monte Carlo	452.45

Week Ahead

MAJOR RESULTS/AGM MEETING THIS WEEK:

15 DEC: JPASSOCIAT

16 DEC: ZYLOG, CANDC

17 DEC: ALOKTEXT, GAMMONIND, HCLTECH, AFTEK, VISASTEEL, UBENGG, SADBHIN, ORBITCORP

18 DEC: ANDHRACEM, NOVAELEMAG, NOVASTEEL

**VISIT US AT: [WWW.INDIRATRADE.COM](http://WWW.INDIRATRADE.COM)**

**Disclaimer**

This report is for private circulation within the Indira Group. This report is strictly confidential and for information of the selected recipient only and may not be altered in any way, transmitted to, copied or distributed, in part or in whole, to any other person or to the media or reproduced in any form. This report should not be construed as an offer or solicitation to buy or sell any securities or any interest in securities. It does not constitute a personal recommendation or take into account the particular investment objectives, financial situations, or any such factor. The information, opinions estimates and forecasts contained here have been obtained from, or are based upon, sources we believe to be reliable, but no representation of warranty, express or implied, is made by us to their accuracy or completeness. Opinions expressed are our current opinions as of the date appearing on this material only and are subject to change without notice.