

Top Stories This Week

- June IIP At 3.8% Vs 2.7% (MoM). July CPI Inflation At 3.78% Vs 5.4% (MoM). July WPI Inflation at -4.05% Vs -2.4% (MoM).
- Tata Motors Q1 Cons Net Profit Down 48.7% At `2,769 Cr Vs `5,398 Cr (YoY) Cons Total Income Down 5.7% At `61,019.5 Cr Vs `64,683 Cr (YoY)
- Central Bank of India eyes IPO for home finance arm.
- Textiles Ministry to hold talks in September on remunerative cotton price.
- Sun Pharma Q1 Cons Net Profit Down 46% At `479 Cr Vs `886.8 Cr (QoQ) Cons Total Income Up 9.8% At `6,757.6 Cr Vs `6,157 Cr (QoQ)
- Coal India Q1 Cons Net Profit Down 6.7% At Rs 3,764 Cr Vs Rs 4,033.3 Cr (YoY) Cons Net Sales Up 6.5% At Rs 18,955.7 Cr Vs Rs 17,799.5 Cr (YoY)
- Vedanta Says Subsidiary BALCO Has Decided To Close Down Its Rolled Product Business.
- Dr Reddy's Announces Launch Of Pramipexole Dihydrochloride Extended-Release Tablets.
- DLF Q1 Cons Net Profit Down 4.9% At Rs 121.5 Cr Vs Rs 127.8 Cr (YoY) Cons Revenue Up 29% At Rs 2,231 Cr Vs Rs 1,725.2 Cr (YoY)
- FIPB Clears 23 FDI Proposals Worth Rs 10,379 Cr

Weekly Indices Change

| Index | Close | P. Close | Chg. (%) |
|---------|-------|----------|----------|
| SENSEX | 28067 | 28236 | -0.60 |
| NIFTY | 8518 | 8564 | -0.54 |
| MIDCAP | 11453 | 11557 | -0.90 |
| SMLCAP | 11766 | 12104 | -2.79 |
| METAL | 7806 | 8672 | -9.99 |
| OIL&GAS | 9507 | 9966 | -4.61 |
| AUTO | 19461 | 19765 | -1.54 |
| TECK | 6397 | 6246 | 2.42 |
| BANKEX | 21488 | 21702 | -0.99 |
| IT | 11621 | 11168 | 4.06 |
| FMCG | 7923 | 8141 | -2.68 |
| HC | 18058 | 17521 | 3.06 |
| PSU | 7414 | 7797 | -4.91 |
| CD | 11264 | 11413 | -1.31 |
| POWER | 2012 | 2064 | -2.52 |
| CG | 17955 | 18392 | -2.38 |
| REALTY | 1429 | 1437 | -0.56 |

Global Indices

| | | | |
|----------|-------|-------|-------|
| DOW | 17477 | 17373 | 0.60 |
| NASDAQ | 5048 | 5034 | 0.28 |
| FTSE | 6550 | 6718 | -2.50 |
| NIKKEI | 20519 | 20724 | -0.99 |
| HANGSENG | 23991 | 24552 | -2.28 |

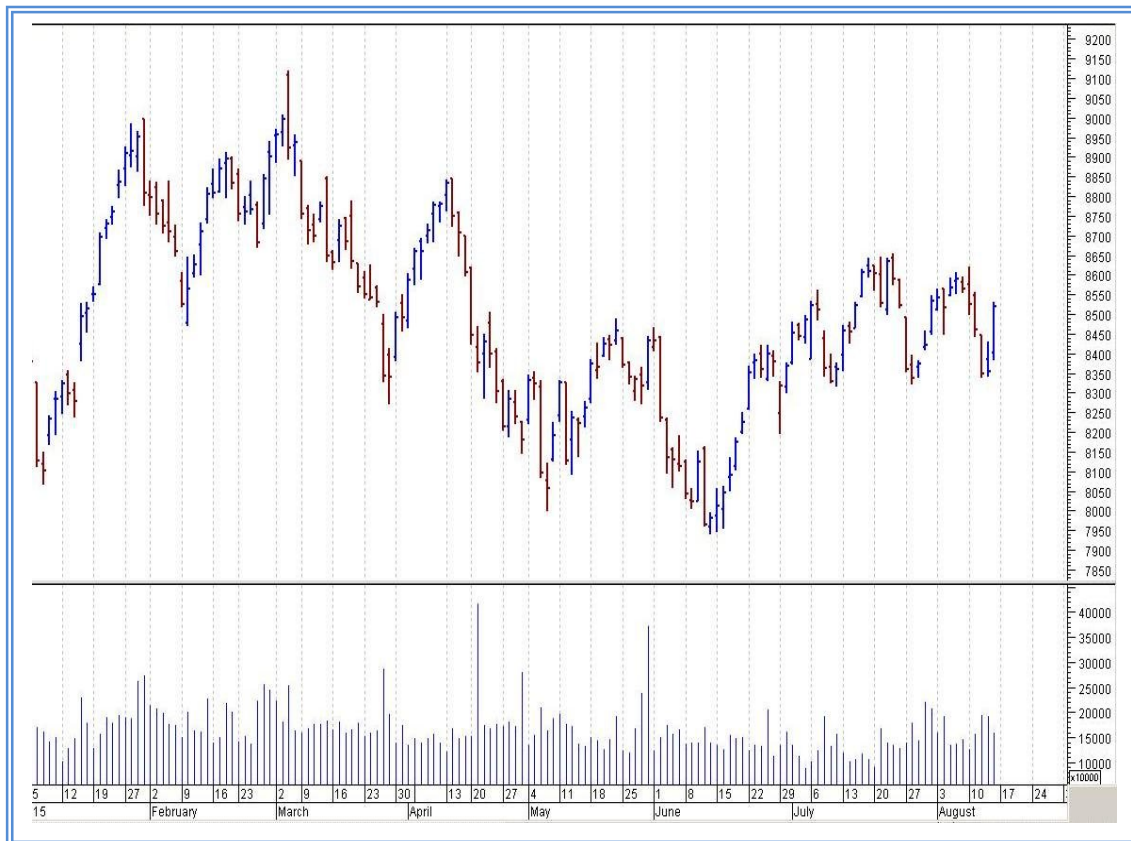
Top Gainers Weekly

| Scrip | Price | % Chg |
|------------------------|---------|-------|
| Chennai Petro. | 240.25 | 34.07 |
| Jubilant Life Science | 344.60 | 26.41 |
| Adani Transmission Ltd | 39.95 | 25.43 |
| Godrej Properties Ltd | 305.85 | 15.94 |
| eClerx Services | 1691.45 | 15.54 |

Top Losers Weekly

| Scrip | Price | % Chg |
|---------------------|--------|-------|
| Castex Technologies | 106.25 | 30.05 |
| PC Jeweller Ltd. | 354.45 | 19.20 |
| STCINDIA | 175.55 | 18.39 |
| HCC | 20.25 | 16.67 |
| RCOM | 60.90 | 16.00 |

Nifty Corner



| Support & Resistance | | | | | | |
|----------------------|-------|--------|--------|------|------|------|
| S3 | S2 | S1 | Nifty | R1 | R2 | R3 |
| 8300 | 8350 | 8400 | 8518 | 8650 | 8700 | 8800 |
| Moving Averages | | | | | | |
| 20DMA | 50DMA | 100DMA | 200DMA | | | |
| 8485 | 8345 | 8405 | 8425 | | | |

Market Commentary

Ahead of Independence day, the market ended with a bang with great support from banks, auto, IT, pharma and infra stocks in Fridays trading session. Throughout the week Nifty and Sensex closed with loss of 0.5%. International markets may have been thrown into a turmoil after China's sudden move to devalue the yuan but the Chinese currency could not have been sustaining itself at such high levels says Marc Faber, author of Gloom Boom & Doom report. The move could just give the US Federal Reserve another opportunity to hold on to all key rates for now. For the next week nifty likely to trade in the range between 8700 – 8800 in the upper side and 8400 – 8350 in the lower side.

Stocks at 52 wk High

| Scrip | Cmp |
|----------------|---------|
| Adani Ports | 363.75 |
| Dr Reddys Labs | 4257.75 |
| Infosys | 1149.25 |
| Torrent Pharma | 1565.80 |
| Zee Entertain | 419.80 |

Stocks at 52 wk Low

| Scrip | Cmp |
|---------------|---------|
| Aban Offshore | 285.70 |
| Cairn India | 155.70 |
| GAIL | 337.15 |
| Hindalco | 93.15 |
| Just Dial | 1018.90 |

FII Activity

| Date | Figures in crore |
|-------|------------------|
| 10/08 | -14.43 |
| 11/08 | -736.81 |
| 12/08 | -1855.02 |
| 13/08 | -625.9 |
| 14/08 | 403.76 |
| NET | -2828.4 |

DII Activity

| Date | Figures in crore |
|-------|------------------|
| 10/08 | -50.05 |
| 11/08 | 130.74 |
| 12/08 | 1223.8 |
| 13/08 | 545.86 |
| 14/08 | 179.20 |
| NET | 2029.55 |

Weekly Stock Idea

| Scrip | B/S | Cmp | Tgt |
|-------------|-----|------|------|
| JETAIRWAYS | B | 400 | 435 |
| ASIANPAINTS | B | 895 | 945 |
| AMARAJABATT | B | 973 | 1035 |
| TATAMOTORS | B | 355 | 375 |
| BAJAJ-AUTO | B | 2558 | 2625 |

Buy on dips & Sell on rise with Stop-loss of 3%

Volume Breakout Stocks

| Scrip | Cmp |
|---------------|---------|
| Liberty Shoes | 270.15 |
| Glenmark | 1134.35 |
| Jet Airways | 400.65 |
| Adani Ports | 363.75 |
| PC Jeweller | 354.45 |

Week Ahead

MAJOR RESULTS/AGM MEETING THIS WEEK:

17 AUG: HFCL, VALECHAENG

19 AUG: UTTAMSUGAR,

20 AUG: HCL-INSYS, CAPLIPOINT

VISIT US AT: WWW.INDIRATRADE.COM

Disclaimer

This report is for private circulation within the Indira Group. This report is strictly confidential and for information of the selected recipient only and may not be altered in any way, transmitted to, copied or distributed, in part or in whole, to any other person or to the media or reproduced in any form. This report should not be construed as an offer or solicitation to buy or sell any securities or any interest in securities. It does not constitute a personal recommendation or take into account the particular investment objectives, financial situations, or any such factor. The information, opinions estimates and forecasts contained here have been obtained from, or are based upon, sources we believe to be reliable, but no representation of warranty, express or implied, is made by us to their accuracy or completeness. Opinions expressed are our current opinions as of the date appearing on this material only and are subject to change without notice.