

Top Stories This Week

- May IIP At 2.7 percent Vs 3.4 percent (MoM), Vs 5.6 percent (YoY).
- June CPI Inflation At 5.4% Vs 5.01% (MoM)
- BILT board approves divestment of 98 percent stake in arm Subah Forest, Malaysia.
- Coal India Says Arm Coal India Africana In Mozambique Allotted Two Leasehold Licences To Extract Coal Of Approx 224 sq km In Tete, Province Of Mozambique
- CCI Approves Mankind Pharma's 11% Stake Sale To PE Investors.
- Pipavav Defence (ET) Russia selects co to make frigates for Indian navy. Order worth is likely to exceed \$3bn
- Thermax Acquires 33% Stake In Alternative Energy Co First Energy.
- June Trade Data: Trade Deficit At \$10.83 Bn Vs \$10.41 Bn (MoM). Exports At \$22.29 Bn Vs \$22.34 Bn (MoM). Imports At \$33.12 Bn Vs \$32.75 Bn (MoM)
- Tata Steel UK Trade Union Says Pensions Dispute Ends as Union Members Vote To Keep Scheme open.
- Mindtree Q1 Cons Net Profit Up 7.4% At `138.2 Cr Vs `128.7 Cr (QoQ) Cons Income From Ops Up 6.9% At `981.6 Cr Vs `918.1 Cr (QoQ)

Weekly Indices Change

Index	Close	P. Close	Chg. (%)
SENSEX	28463	27661	2.90
NIFTY	8609	8360	2.98
MIDCAP	11220	10870	3.22
SMLCAP	11716	11335	3.36
METAL	8998	8871	1.43
OIL&GAS	10079	9775	3.11
AUTO	18931	18403	2.87
TECK	6070	5791	4.82
BANKEX	21912	21472	2.05
IT	10678	10156	5.14
FMCG	7967	7701	3.45
HC	17860	17055	4.72
PSU	7836	7666	2.22
CD	11163	10721	4.12
POWER	2131	2051	3.90
CG	18714	18427	1.56
REALTY	1411	1407	0.28

Global Indices

DOW	18086	17760	1.84
NASDAQ	5210	4997	4.26
FTSE	6775	6673	1.53
NIKKEI	20600	19779	4.15
HANGSENG	25415	24901	2.06

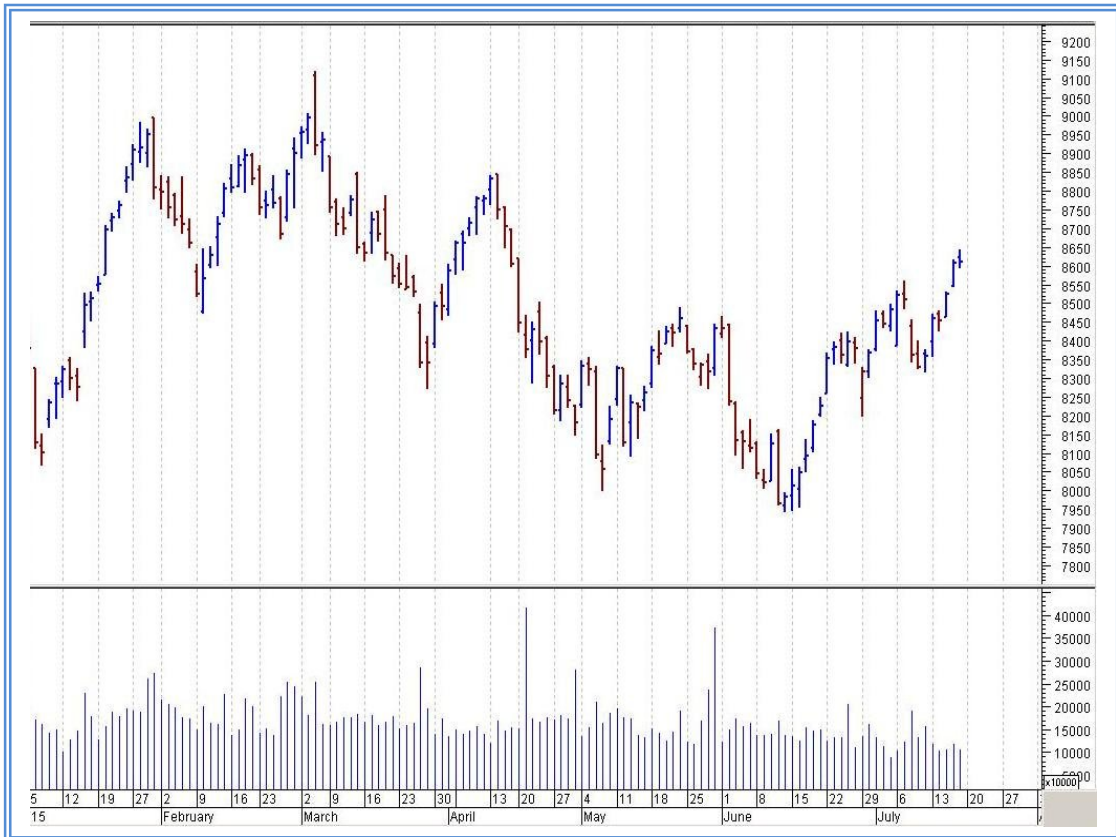
Top Gainers Weekly

Scrip	Price	% Chg
V2 Retail	70.45	29.98
Unichem Labs	260.25	26.92
Nilkamal Ltd.	723.35	24.23
Jubilant Life Science	216.20	23.79
OnMobile Global Ltd.	101.60	21.68

Top Losers Weekly

Scrip	Price	% Chg
RS Software (India)	162.80	18.09
Sharon Bio-Medicine	17.35	11.70
Mangalore Chem.	63.95	9.23
Just Dial	1095.50	8.43
Emami Ltd.	1161.00	7.09

Nifty Corner



Support & Resistance						
S3	S2	S1	Nifty	R1	R2	R3
8350	8450	8500	8609	8650	8700	8800
Moving Averages						
20DMA	50DMA	100DMA	200DMA			
8435	8305	8445	8395			

Market Commentary

Both the Indices Nifty and Sensex closed with significant gains during the week. Buying seen across all sectors, All the major indices closed with significant gains during the week. For the next week Nifty likely to trade in the range between 8700 - 8800 in the upper side and 8500 - 8450 in the lower side.

Stocks at 52 wk High

Scrip	Cmp
Aurobindo Phar	1515.70
BEML	1474.10
Dr Reddys Labs	3877.05
HDFC Bank	1110.55
HPCL	868.60

Stocks at 52 wk Low

Scrip	Cmp
Beardsell	47.25
DB (Int) Stock	26.65
Onelife Capital	50.90
Sarda Energy	105.80
--	--

FII Activity

Date	Figures in crore
13/07	527.98
14/07	269.9
15/07	407.69
16/07	745.81
17/07	605.56
NET	2556.94

DII Activity

Date	Figures in crore
13/07	-171.55
14/07	-130.90
15/07	-50.38
16/07	-98.51
17/07	-175.15
NET	-626.49

Weekly Stock Idea

Scrip	B/S	Cmp	Tgt
DIVISLAB	B	1975	2035
ITC	B	322	340
HAVELLS	B	307	325
HOTELEELA	B	20	24
INOXLEISURE	B	207	235

Buy on dips & Sell on rise with Stop-loss of 3%

Volume Breakout Stocks

Scrip	Cmp
Den Networks	166.35
Whirlpool	808.70
Punj Lloyd	28.90
INOX Leisure	207.10
Titagarh Wagons	121.35

Week Ahead

MAJOR RESULTS/AGM MEETING THIS WEEK:

20 JULY: LICHSGFIN, ULTRACEMCO, KAJARIACER, TATACOFFEE, LAMBODHARA

21 JULY: CANFINHOME, HDFCBANK, CENTURYPLY, WHIRLPOOL, IBULHSGFIN, CAIRN, INFY, HINDUNILVR, IDEA, TATASPONGE, ASIANPAINT, EICHERMOT

22 JULY: BAJFINANCE, BAJAJFINSV, TATAMETALI, NETWORK18, MUTHOOTFIN, TEXRAIL, SKSMICRO, INFRATEL, PVR, CEATLTD,

23 JULY: TTKPRESTIG, BAJAJHLDNG, MANPASAND, RALLIS, GAIL, LUPIN, L&TFH, BIOCON, BAJAJ-AUTO, SBT, DHFL, WIPRO,

24 JULY: RELIANCE, EVEREADY, SBBJ, BEL, M&MFIN, CROMPGREAV, AXISBANK. TATAELXSI. GAIL. TVSMOTOR. ABB.

VISIT US AT: WWW.INDIRATRADE.COM

Disclaimer

This report is for private circulation within the Indira Group. This report is strictly confidential and for information of the selected recipient only and may not be altered in any way, transmitted to, copied or distributed, in part or in whole, to any other person or to the media or reproduced in any form. This report should not be construed as an offer or solicitation to buy or sell any securities or any interest in securities. It does not constitute a personal recommendation or take into account the particular investment objectives, financial situations, or any such factor. The information, opinions estimates and forecasts contained here have been obtained from, or are based upon, sources we believe to be reliable, but no representation of warranty, express or implied, is made by us to their accuracy or completeness. Opinions expressed are our current opinions as of the date appearing on this material only and are subject to change without notice.