

# MARKET MANTRA

MONTHLY NEWSLETTER

ISSUE: JULY 2015

## Services Indira Group Offers under its Umbrella :



- ≈ EQUITY BROKING NSE& BSE
- ≈ DEPOSITORY SERVICES
- ≈ COMMODITIES NCDEX & MCX
- ≈ DERIVATIVES NSE, BSE & FOREX
- ≈ CURRENCY DERIVATIVES NSE, BSE, MCX
- ≈ INSTITUTIONAL BROKING
- ≈ RESEARCH & ADVICE
- ≈ E-BROKING
- ≈ MUTUAL FUND INVESTMENT
- ≈ ONLINE IPO BIDDING
- ≈ INSURANCE ADVISORY
- ≈ EDUCATING THROUGH CLASSROOM FACILITY - INSPIRE

## Market Commentary

The June series was a rather volatile one, but the market seems to be slowly coming out of it. "There were a lot of news flows related moves as well – monsoon, Greece Issue and the US Federal Reserve policy meet,". We Feels, the July series will start on a better note. The next important cue for the markets will be the results season, followed by the monsoon session of the Parliament. We will also be watching out for some guidance from the Reserve Bank if monsoon continues to be good. We see further relaxation in interest rates on the back of good monsoon and hence advise investors to bet on interest-sensitive sectors. For the month Nifty likely to trade in the range between 8650 – 8850 in the upper side and 8200 – 8000 in the lower side.

## Monthly Indices Change

Till - 30/06/2015

INDEX	CLOSE	P.CLOSE	CHANGE %
SENSEX	27780	27828	(0.17)
NIFTY	8368	8433	(0.77)
<b>BSE Sectoral Indices</b>			
MIDCAP	10679	10716	(0.35)
SMLCAP	11075	11280	(1.82)
METAL	9335	9728	(4.04)
OIL&GAS	9859	9643	2.24
AUTO	18712	19079	(1.92)
TECK	5924	6122	(3.23)
BANKEX	20982	21511	(2.46)
IT	10449	10910	(4.23)
FMCG	7789	7847	(0.74)
HC	16564	16900	(1.99)
PSU	7637	7815	(2.28)
CD	10745	10666	0.74
POWER	2022	2069	(2.27)
CG	17517	16802	4.26
REALTY	1413	1537	(8.07)

## Global Indices

INDEX	CLOSE	P.CLOSE	CHANGE %
DOW JONES	17596	18010	(2.30)
NASDAQ	4958	5070	(2.21)
HANGSENG	26250	27424	(4.28)
FTSE	6620	6984	(5.21)
NIKKEI	20235	20563	(1.60)

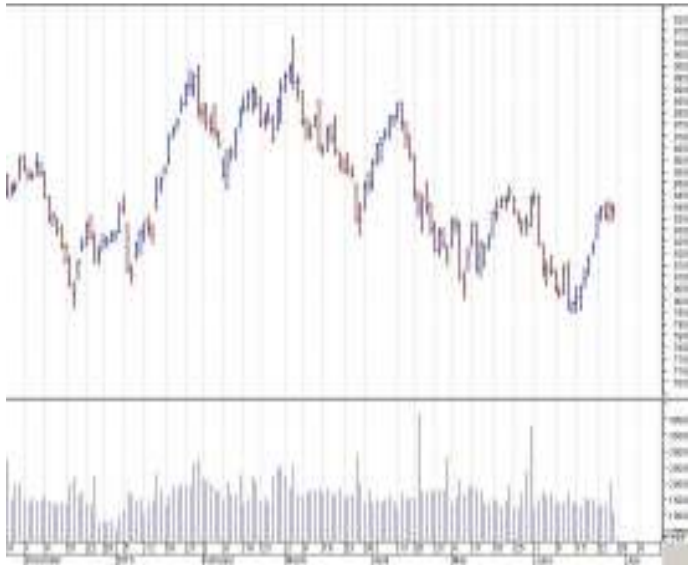
## Commodity Market

SCRIP	CLOSE	P.CLOSE	CHANGE %
GOLD	26671	26860	(0.70)
SILVER	35854	38349	(6.51)
CRUDE	3735	3869	(3.46)

## Currency Rates

CURRENCY	CLOSE	P.CLOSE	CHANGE %
INR-1 USD	63.7549	63.7615	(0.01)
INR-1 EURO	71.2015	69.9081	1.85
INR-100 YEN	52.0700	51.4800	1.15
INR-1 POUND	100.1207	97.7974	2.38

Nifty = 8368



### Technical

	Resistance	Support
1	8550	8250
2	8650	8150
3	8800	8000

### Moving Averages

20 days	8181
50 days	8255
100 days	8476
200 days	8372

### Top Gainer Monthly

Scrip	Cmp	% Chg
RAJESHEXP	326	39.30
ESSAROIL	139	34.55
BEML	1208	28.30
DISHTV	106	28.01
SRF	1229	26.40
APLL	662	25.10
WELCORP	114	23.69
BAJAJFINANCE	5470	22.02
BRITANNIA	2763	18.90
AJANTAPHARMA	1569	17.92

### Fund Activity – JUNE 2015

In Rs crores

	BUY	SELL	NET
FII	83533.49	91175.03	(-7641.54)
DII	39683.98	28238.02	11445.96

TILL (29/06/2015)

### Stocks at 52 wk high

Scrip	Cmp
ADORWELD	261
FCL	39
BPCL	879
COALINDIA	421
EMAMILTD	1159

### Stocks at 52 wk Low

Scrip	Cmp
BANKINDIA	171
BINANIIND	81
CANBK	277
GMDC	93
JINDALSTEEL	85

### Top Losers Monthly

Scrip	Cmp	% Chg
UNITECH	8	44.81
JPASSOCIATE	11	39.57
JINDALSTEEL	85	37.88
JKTYRE	81	31.44
ADANIPOWER	29	300.02
JETAIRWAYS	281	24.88
ABAN	303	23.20
COX&KING	234	23.15
TECHM	478	22.78
PERSISTANCE	601	22.23

## Major Economic Event JUNE

- ✚ Industrial output for the country surged to 4.1 percent in April, starkly higher to economists' expectations of a number around 1.16 percent, while May consumer inflation came in line with expectations at 5.01 percent. The index of industrial production (IIP) data compares to a reading of 2.1 percent month-on-month, while consumer price index (CPI) last month stood at 4.87 percent. Economists said the positive surprise seen in the IIP data affirmed broad economic activity was on the mend while inflation appeared to be headed slightly higher after riding out a few months' adjustment for base effects – in line with the Reserve Bank of India's expectation.
- ✚ The annual rate of inflation, based on monthly Wholesale Price Inflation, stood at -2.36 percent (provisional) for the month of May, 2015 (over May, 2014) as compared to -2.65 percent (provisional) for the previous month and 6.18 percent during the corresponding month of the previous year. This was the seventh straight fall in WPI aided by fall in Food articles inflation (3.8 percent vs 5.73 percent MoM), Manufactured products inflation (-0.64 percent Vs -0.52 percent MoM) and Primary articles inflation (-0.77 percent Vs -0.25 percent MoM). For the month of March, 2015, the final Wholesale Price Index and annual rate of inflation remained unchanged at its provisional level of 176.1 and -2.33 percent respectively.
- ✚ The Reserve Bank of India has cut the repo rate by 25 basis points for the third time this year. The repo rate is the rate at which the central bank lends to other commercial banks. This rate now stands at 7.25% after the cut during the second bi-monthly policy review. This move by the governor of the RBI, Raghuram Rajan, was widely expected. But the 25 basis points cut has left those who were hoping for a 50 basis points cut disappointed.

## Corporate Actions:

EX-DATE	SCRIP	PURPOSE
1-Jul-15	CENTENKA	Annual General Meeting/ Dividend - Rs. 6/- Per Share
1-Jul-15	RELAXO	Bonus 1:1
2-Jul-15	LLOYDELENG	Annual General Meeting/ Dividend - Rs 1.30/- Per Share
2-Jul-15	SOBHA	Annual General Meeting/ Dividend - Rs 7/- Per Share
2-Jul-15	HDFCBANK	Annual General Meeting/ Dividend - Rs 8/- Per Share
2-Jul-15	RSSOFTWARE	Annual General Meeting/Dividend - Rs 1.25 Per Share
2-Jul-15	UNICHEMLAB	Annual General Meeting/Dividend - Rs 2/- Per Share
2-Jul-15	M&MFIN	Annual General Meeting/Dividend - Rs 4/- Per Share
3-Jul-15	ZENSARTECH	Annual General Meeting/Dividend Rs 6.50 Per Share
6-Jul-15	MENONBE	Annual General Meeting / Dividend - Re 0.80/- Per Share
6-Jul-15	JSWSTEEL	Annual General Meeting/ Dividend - Rs 11/- Per Share
6-Jul-15	VEDL	Annual General Meeting/ Dividend - Rs 2.35/- Per Share
6-Jul-15	BALKRISIND	Annual General Meeting/Dividend -Rs 2.40/- Per Share
7-Jul-15	SUNDARMFIN	Annual General Meeting / Dividend - Rs 6/- Per Share
7-Jul-15	HONAUT	Annual General Meeting/ Dividend - Rs 12.50/- Per Share
7-Jul-15	SOUTHBANK	Annual General Meeting/Dividend - Re 0.60/- Per Share
8-Jul-15	CAIRN	Annual General Meeting/ Dividend - Rs 4/- Per Share
8-Jul-15	GREENPLY	Annual General Meeting/Dividend - Rs 3/- Per Share
8-Jul-15	MBLINFRA	Annual General Meeting/Dividend - Rs 3/- Per Share
8-Jul-15	KTKBANK	Annual General Meeting/Dividend - Rs 5/- Per Share
9-Jul-15	BAJFINANCE	Annual General Meeting / Dividend - Rs 18/- Per Share
9-Jul-15	ZEEL	Annual General Meeting / Dividend - Rs 2.25/- Per Share
9-Jul-15	CGCL	Annual General Meeting / Dividend Of Rs 1.50 Per Share
9-Jul-15	RBL	Annual General Meeting / Dividend Rs 7/- Per Share
9-Jul-15	NOCIL	Annual General Meeting/ Dividend - Re 1/- Per Share
9-Jul-15	ECLERX	Annual General Meeting/ Dividend - Rs 35/- Per Share
9-Jul-15	SHREYAS	Annual General Meeting/Dividend - Rs 1.30/- Per Share
9-Jul-15	21STCENMGM	Annual General Meeting/Dividend - Rs 2/- Per Share
9-Jul-15	BAJAJFINSV	Annual General Meeting/Dividend Rs 1.75 Per Share
9-Jul-15	BAJAJHLDNG	Annual General Meeting/Dividend Rs 32.50/- Per Share
9-Jul-15	AXISBANK	Annual General Meeting/Dividend Rs 4.60/- Per Share
9-Jul-15	GICHSGFIN	Annual General Meeting/Dividend Rs 5/- Per Share
9-Jul-15	CYIENT	Annual General Meeting/Dividend Rs 5/- Per Share
9-Jul-15	BAJAJ-AUTO	Annual General Meeting/Dividend Rs 50/- Per Share
9-Jul-15	SWARAJENG	Final Dividend - Rs 15/- Per Share And Special Dividend - Rs 18/- Per Share
10-Jul-15	RANEENGINE	Annual General Meeting / Dividend - Rs 2.50/- Per Share
10-Jul-15	VIPIND	Annual General Meeting/ Dividend - Re 1/- Per Share
10-Jul-15	CCL	Annual General Meeting/ Dividend - Rs 1.50/- Per Share (Book Closure Dates Revised)
10-Jul-15	KARURVYSYA	Annual General Meeting/ Dividend - Rs 13/- Per Share
10-Jul-15	JSWENERGY	Annual General Meeting/ Dividend - Rs 2 Per Share
10-Jul-15	CAPF	Annual General Meeting/ Dividend - Rs 2.20/- Per Share
10-Jul-15	VOLTAS	Annual General Meeting/Dividend - Rs 2.25/- Per Share
10-Jul-15	BLUESTARCO	Annual General Meeting/Dividend - Rs 5/- Per Share
10-Jul-15	DRREDDY	Annual General Meeting/Dividend Rs 20/- Per Share

# INDIRA SECURITIES P. LTD.

10-Jul-15	BANKINDIA	Annual General Meeting/Dividend Rs 5/- Per Share
13-Jul-15	UFLEX	Annual General Meeting/ Dividend - Rs 2.70/- Per Share
14-Jul-15	AIL	Annual General Meeting/Dividend - Rs 10/- Per Share
14-Jul-15	TIDEWATER	Annual General Meeting/Dividend - Rs 250/- Per Share
15-Jul-15	IMFA	Annual General Meeting / Dividend - Rs 1.50/- Per Share
15-Jul-15	HDFC	Annual General Meeting/ Dividend - Rs 13/- Per Share
15-Jul-15	CENTURYTEX	Annual General Meeting/ Dividend - Rs 5.50/- Per Share
15-Jul-15	SUNILHITEC	Annual General Meeting/Dividend - Rs 1.80/- Per Share
15-Jul-15	GHCL	Annual General Meeting/Dividend - Rs 2.20/- Per Share
15-Jul-15	TATAELXSI	Annual General Meeting/Dividend Rs 11/- Per Share
16-Jul-15	COROMANDEL	Annual General Meeting/ Dividend - Rs 2.50/- Per Share
16-Jul-15	WABAG	Annual General Meeting/ Dividend - Rs 4/- Per Share
16-Jul-15	ZYDUSWELL	Annual General Meeting/Dividend - Rs 6/- Per Share
16-Jul-15	SUBROS	Annual General Meeting/Dividend - Re 0.70/- Per Share
16-Jul-15	M&M	Annual General Meeting/Dividend - Rs 12/- Per Share
16-Jul-15	SQSBFSI	Annual General Meeting/Dividend - Rs 20/- Per Share
16-Jul-15	VISAKAIND	Annual General Meeting/Dividend - Rs 5/- Per Share
16-Jul-15	MHRIL	Annual General Meeting/Dividend- Rs 4/- Per Share
16-Jul-15	THERMAX	Annual General Meeting/Dividend Rs 7/- Per Share
16-Jul-15	PERSISTENT	Annual General Meeting/Final Dividend - Rs. 2.50/- Per Share And Special Silver Jubilee Dividend - Rs. 2.50/- Per Share
16-Jul-15	KIRLOSMBROS	Dividend - Re 0.50/- Per Share
16-Jul-15	NRBBEARING	Dividend - Rs 1.50/- Per Share
16-Jul-15	CERA	Dividend - Rs 6.25 Per Share
17-Jul-15	TATACOFFEE	Annual General Meeting / Dividend- Rs 1.30/- Per Share
17-Jul-15	GRPLTD	Annual General Meeting/ Dividend - Rs 11.25/- Per Share
17-Jul-15	TTKPRESTIG	Annual General Meeting/ Dividend - Rs 22/- Per Share
17-Jul-15	ORIENTCEM	Annual General Meeting/Dividend Re 1/- Per Share
17-Jul-15	NAUKRI	Annual General Meeting/Dividend Rs 2/- Per Share
20-Jul-15	TATAPOWER	Annual General Meeting/ Dividend - Rs 1.30/- Per Share
20-Jul-15	SHRIRAMCIT	Annual General Meeting/ Dividend - Rs 10.50/- Per Share
20-Jul-15	WIPRO	Annual General Meeting/ Dividend - Rs 7/- Per Share
20-Jul-15	THANGAMAYL	Annual General Meeting/Dividend - Re 1/- Per Share
20-Jul-15	BLUEDART	Annual General Meeting/Dividend - Rs 20/- Per Share
20-Jul-15	JKCEMENT	Annual General Meeting/Dividend - Rs 4/- Per Share
20-Jul-15	BHARATFORG	Annual General Meeting/Dividend Rs 4.50 Per Share
20-Jul-15	GABRIEL	Annualgeneral Meeting / Dividend - Rs. 0.60/- Per Share
21-Jul-15	INDORAMA	Annual General Meeting/ Dividend - Re 1/- Per Share
21-Jul-15	SURYALAXMI	Annual General Meeting/ Dividend - Rs 1.20/- Per Share
21-Jul-15	CARBORUNIV	Annual General Meeting/Dividend Re 0.50 Per Share
21-Jul-15	INDOCO	Annual General Meeting/Final Dividend Rs 1.60/- Per Share
21-Jul-15	SESHAPAPER	Final Dividend - Rs 4/- Per Share
22-Jul-15	EIDPARRY	Annual General Meeting / Dividend - Re 1/- Per Share
22-Jul-15	PHILIPCARB	Annual General Meeting / Dividend - Re 1/- Per Share
22-Jul-15	SONATSOFTW	Annual General Meeting / Dividend - Rs 4.25/- Per Share
22-Jul-15	CESC	Annual General Meeting / Dividend - Rs 9/- Per Share
22-Jul-15	RML	Annual General Meeting / Dividend - Rs. 4.50/- Per Share
22-Jul-15	TUBEINVEST	Annual General Meeting/ Dividend - Re 0.50 Per Share
22-Jul-15	CHEMFALKAL	Annual General Meeting/ Dividend - Rs 1.25/- Per Share

# INDIRA SECURITIES P. LTD.

22-Jul-15	SWELECTES	Annual General Meeting/ Dividend - Rs 2.50/- Per Share
22-Jul-15	INDIANHUME	Annual General Meeting/ Dividend - Rs 3/- Per Share
22-Jul-15	SRTRANSFIN	Annual General Meeting/ Dividend - Rs 6/- Per Share
22-Jul-15	EIHOTEL	Annual General Meeting/Dividend - Rs 1.10/- Per Share
22-Jul-15	SAREGAMA	Annual General Meeting/Dividend - Rs 1.50 Per Share
22-Jul-15	EIHAHOTELS	Annual General Meeting/Dividend - Rs 3/- Per Share
22-Jul-15	ABBOTINDIA	Annual General Meeting/Dividend - Rs 31/- Per Share
22-Jul-15	ADORWELD	Annual General Meeting/Dividend - Rs 5/- Per Share
22-Jul-15	ROSSELLIND	Annual General Meeting/Dividend Re 0.50 Per Share
22-Jul-15	SREINFRA	Annual General Meeting/Dividend Re 0.50 Per Share
22-Jul-15	SHOPERSTOP	Annual General Meeting/Dividend Re 0.75/- Per Share
22-Jul-15	HIL	Annual General Meeting/Dividend Rs 10/- Per Share
22-Jul-15	MAHLIFE	Annual General Meeting/Dividend Rs 6/- Per Share
23-Jul-15	TATASTEEL	Annual General Meeting / Dividend - Rs. 8/- Per Share
23-Jul-15	DBCORP	Annual General Meeting/ Dividend - Rs 4.25 Per Share
23-Jul-15	DPL	Annual General Meeting/ Dividend - Rs 4/- Per Share
23-Jul-15	TECHM	Annual General Meeting/ Dividend - Rs 6/- Per Share
23-Jul-15	NIITTECH	Annual General Meeting/ Dividend - Rs 9.50/- Per Share
23-Jul-15	SUVEN	Annual General Meeting/Dividend - Re 0.60/- Per Share
23-Jul-15	TCI	Annual General Meeting/Dividend - Re 0.90/- Per Share
23-Jul-15	NESCO	Annual General Meeting/Dividend - Rs 6.50 Per Share
23-Jul-15	GLAXO	Annual General Meeting/Dividend - Rs 62..50/- Per Share
23-Jul-15	MAGMA	Annual General Meeting/Dividend Re - 0.80/- Per Share
23-Jul-15	EXIDEIND	Annual General Meeting/Dividend Re 0.70 Per Share
23-Jul-15	CHOLAFIN	Annual General Meeting/Dividend Re 1/- Per Share
23-Jul-15	IDFC	Final Dividend - Rs 2.60 Per Share
24-Jul-15	JAYSREETEA	Annual General Meeting / Dividend - Re 1/- Per Share
24-Jul-15	GEOJITBNPP	Annual General Meeting / Dividend - Rs 1.75/- Per Share
24-Jul-15	GRINDWELL	Annual General Meeting/ Dividend - Rs 6.50/- Per Share
24-Jul-15	BERGEPAIN	Annual General Meeting/Dividend - Re 0.65/- Per Share
24-Jul-15	VGUARD	Annual General Meeting/Dividend - Rs 4.50/- Per Share
24-Jul-15	MCLEODRUSS	Annual General Meeting/Dividend Rs 3/- Per Share
24-Jul-15	REDINGTON	Dividend Rs 1.90 Per Share
27-Jul-15	WABCOINDIA	Annual General Meeting / Dividend - Rs. 5/- Per Share
27-Jul-15	SNOWMAN	Annual General Meeting / Dividend-Re 0.50 Per Share
27-Jul-15	GODREJPROP	Annual General Meeting/Dividend - Rs 2/- Per Share
27-Jul-15	BRITANNIA	Annual General Meeting/Dividend - Rs 16/- Per Share
27-Jul-15	GSKCONS	Annual General Meeting/Dividend - Rs. 55/- Per Share
27-Jul-15	TRENT	Annual General Meeting/Final Dividend Rs.7.50/- Per Share/Special Dividend Rs.2.50/- Per Share
28-Jul-15	MAYURUNIQ	Annual General Meeting/ Dividend - Re 0.80/- Per Share
28-Jul-15	TATAINVEST	Annual General Meeting/ Dividend - Rs 17/- Per Share
28-Jul-15	PEL	Annual General Meeting/ Dividend - Rs 20/- Per Share
28-Jul-15	VINATORGA	Annual General Meeting/ Dividend - Rs 3.50/- Per Share
29-Jul-15	BAJAJELEC	Annual General Meeting / Dividend - Rs 1.50/- Per Share
29-Jul-15	RAMCOCEM	Annual General Meeting/ Dividend - Rs 1.50/- Per Share
29-Jul-15	STYABS	Annual General Meeting/ Dividend - Rs 4/- Per Share
29-Jul-15	L&TFH	Annual General Meeting/Dividend - Re 0.80/- Per Share
30-Jul-15	FINCABLES	Annual General Meeting / Dividend - Rs 1.80/- Per Share

# INDIRA SECURITIES P. LTD.

30-Jul-15	COSMOFILMS	Annual General Meeting / Dividend - Rs 3.50/- Per Share
30-Jul-15	NELCAST	Annual General Meeting/ Dividend - Re 0.70/- Per Share
30-Jul-15	BOMDYEING	Annual General Meeting/ Dividend - Re 0.80/- Per Share
30-Jul-15	PTL	Annual General Meeting/ Dividend - Re 1/- Per Share
30-Jul-15	TATAGLOBAL	Annual General Meeting/ Dividend - Rs 2.25/- Per Share
30-Jul-15	WHEELS	Annual General Meeting/ Dividend - Rs 4.50/- Per Share
30-Jul-15	CUMMINSIND	Annual General Meeting/ Dividend - Rs 9/- Per Share
30-Jul-15	GREAVESCOT	Annual General Meeting/ Final Dividend - Rs. 1.10/- Per Share (Book Closure Date Revised)
30-Jul-15	LAOPALA	Annual General Meeting/Dividend - Rs 1.30/- Per Share
30-Jul-15	SUDARSCHEM	Annual General Meeting/Dividend - Rs 1.75/- Per Share
30-Jul-15	CADILAHC	Annual General Meeting/Dividend - Rs 12/- Per Share
30-Jul-15	KAKATCEM	Annual General Meeting/Dividend - Rs 2.70/- Per Share
30-Jul-15	APOLLOHOSP	Annual General Meeting/Dividend Rs 5.75 Per Share
30-Jul-15	VOLTAMP	Dividend - Rs 10/- Per Share
31-Jul-15	GODREJIND	Annual General Meeting/ Dividend - Rs 1.75/- Per Share
31-Jul-15	TATASPONGE	Annual General Meeting/ Dividend - Rs 10/- Per Share
31-Jul-15	LAXMIMACH	Annual General Meeting/ Dividend - Rs.37.50/- Per Share
31-Jul-15	HERCULES	Annual General Meeting/Dividend - Rs 1.50/- Per Share
31-Jul-15	TATACHEM	Annual General Meeting/Dividend Rs 10/- Per Share And Special Dividend Rs.2.50/-Per Share
31-Jul-15	TRITURBINE	Final Dividend - Re 0.60/- Per Share



Registered Office

Singh House, 3 rd Floor, 23/25 Ambalal Doshi Marg, Fort, Mumbai, 400023  
Tel : +91 22 22656812 Fax : +91 22 22656985 Email : im@indiratrade.com

---

Head Offices

Ramavat House, E-15, Saket Nagar, Opp. Amar Darshan Bldg., Indore, 452001  
Tel : +91 731 4097123 Fax : +91 731 2562117 Email :vramavat@indiratrade.com

---

Institutional Dealing Unit

Africa House, 5, Topiwalla Lane, Lamington Road, Mumbai, 400007  
Tel : +91 22 30080678 Fax : +91 22 23870767 Email : ie@indirartrade.com

---



[VISIT US AT : WWW.INDIRATRADE.COM](http://WWW.INDIRATRADE.COM)  
[VISIT US AT : WWW.INSPIREEDUCATION.IN](http://WWW.INSPIREEDUCATION.IN)

INDIRA SECURITIES (P) LTD, RAMAVAT HOUSE, E-15, SAKET NAGAR, INDORE – 452

**Disclaimer**

This report is for private circulation within the Indira Group. This report is strictly confidential and for information of the selected recipient only and may not be altered in any way, transmitted to, copied or distributed, in part or in whole, to any other person or to the media or reproduced in any form. This report should not be construed as an offer or solicitation to buy or sell any securities or any interest in securities. It does not constitute a personal recommendation or take into account the particular investment objectives, financial situations, or any such factor. The information, opinions estimates and forecasts contained here have been obtained from, or are based upon, sources we believe to be reliable, but no representation of warranty, express or implied, is made by us to their accuracy or completeness. Opinions expressed are our current opinions as of the date appearing on this material only and are subject to change without notice.