

Top Stories This Week

- Feb IIP doubles to 5% M-o-M, economy sees signs of revival.
- French President announced that the European country will be investing 2 billion euro in India. France will also help in development of three smart cities in India, including Pondicherry and Nagpur.
- CCI approves Max India demerger plan.
- Govt plans to introduce civil aviation policy by May 15: PTI
- Moody's affirms India's Baa3 rating; changes outlook to positive.
- Government will set up Medical Devices Parks in the country & first such park to come up in Gujarat.
- SBI Cuts Lending Rate By 15 bps To 9.85% Effective April 10.
- FY15 India's steel production up 7.9% at 88.12 mt (YoY).
- US, UK, France, China & Russia plus Germany sign nuclear framework agreement with Iran.
- ONGC receives US patent on hydrogen generation process.
- Tata Steel's Canadian Arm Acquires Remaining 49% In Howse Iron Ore Deposit For \$4 m From Labrador Iron ore Mine Holdings.
- SBI Allots 10.04 Cr Shares At 295.59/Sh On Preferential Basis To Govt

Weekly Indices Change

| Index | Close | P. Close | Chg. (%) |
|---------|-------|----------|----------|
| SENSEX | 28879 | 28260 | 2.19 |
| NIFTY | 8780 | 8586 | 2.26 |
| MIDCAP | 11093 | 10750 | 3.19 |
| SMLCAP | 11846 | 11146 | 6.28 |
| METAL | 10084 | 9542 | 5.68 |
| OIL&GAS | 9679 | 9358 | 3.43 |
| AUTO | 19808 | 19465 | 1.76 |
| TECK | 6414 | 6225 | 3.04 |
| BANDEX | 21610 | 21360 | 1.17 |
| IT | 11643 | 11277 | 3.25 |
| FMCG | 8272 | 7877 | 5.01 |
| HC | 18160 | 17683 | 2.70 |
| PSU | 7968 | 7679 | 3.76 |
| CD | 10871 | 10459 | 3.94 |
| POWER | 2213 | 2137 | 3.56 |
| CG | 17724 | 17440 | 1.63 |
| REALTY | 1787 | 1691 | 5.68 |

Global Indices

| | | | |
|----------|-------|-------|------|
| DOW | 18057 | 17763 | 1.66 |
| NASDAQ | 4995 | 4886 | 2.23 |
| FTSE | 7089 | 6833 | 3.75 |
| NIKKEI | 19907 | 19435 | 2.43 |
| HANGSENG | 27272 | 25275 | 7.90 |

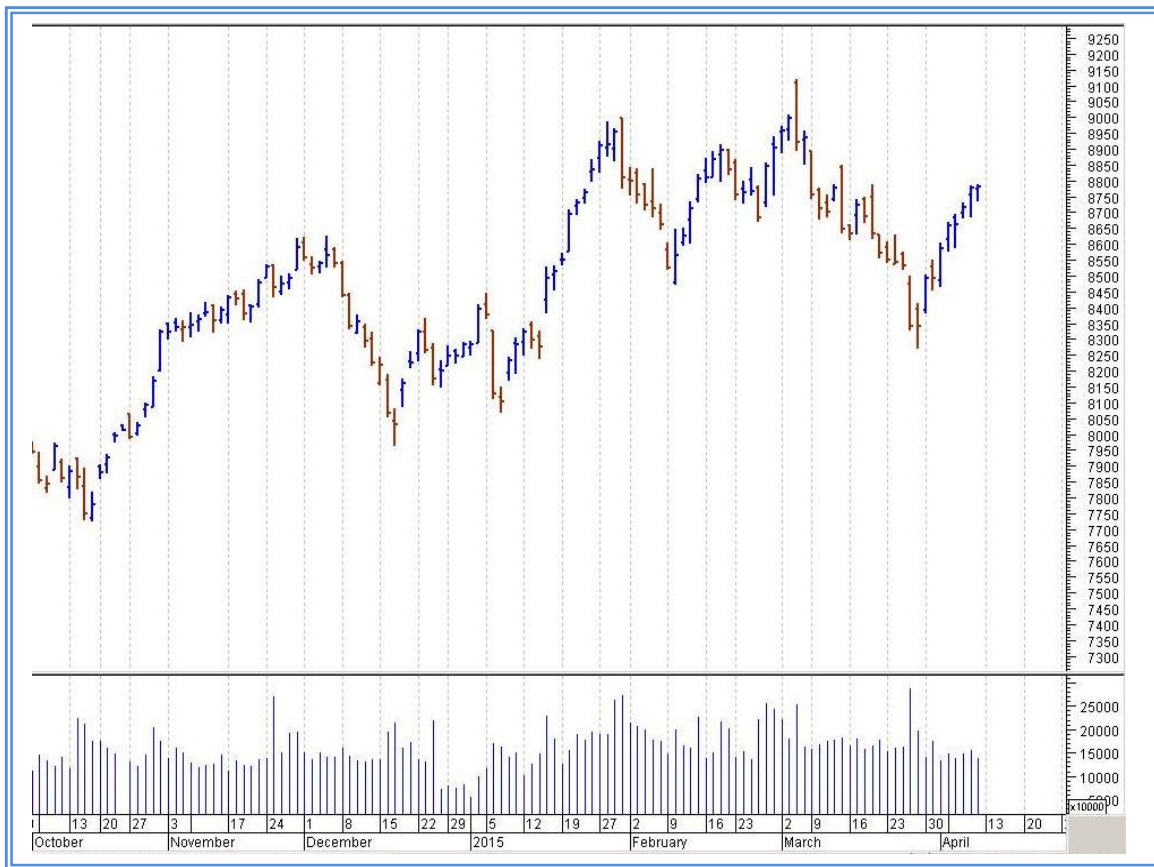
Top Gainers Weekly

| Scrip | Price | % Chg |
|---------------------|---------|-------|
| Marico Kaya Enter | 2277.60 | 49.39 |
| Kokuyo Camlin | 101.70 | 38.93 |
| RS Software (India) | 234.45 | 37.51 |
| HDIL | 136.75 | 34.40 |
| Elder Pharma | 116.65 | 33.85 |

Top Losers Weekly

| Scrip | Price | % Chg |
|----------------------|--------|-------|
| Sun TV Network Ltd. | 391.25 | 11.45 |
| Gateway Distriparks | 371.90 | 9.49 |
| Kajaria Ceramics | 759.50 | 5.91 |
| Suprajit Engineering | 123.30 | 5.01 |
| Info Edge (India) | 799.70 | 4.79 |

Nifty Corner



| Support & Resistance | | | | | | |
|----------------------|------|-------|-------|--------|------|--------|
| S3 | S2 | S1 | Nifty | R1 | R2 | R3 |
| 8500 | 8550 | 8600 | 8780 | 8850 | 8950 | 9050 |
| Moving Averages | | | | | | |
| 20DMA | | 50DMA | | 100DMA | | 200DMA |
| 8605 | | 8715 | | 8555 | | 8215 |

Market Commentary

The market jumped last week after global rating agency Moody's revised India's sovereign outlook to positive from stable. Market also gained as a weak US jobs report spurred speculation the US Federal Reserve will keep interest rates low. In the week ended Friday, 10 April 2015, the 30-share S&P BSE Sensex gained 2.19%. The 50-unit CNX Nifty gained 2.26%. For the next week Nifty likely to trade in the range between 8850 – 8950 in the upper side and 8600 – 8550 in the lower side.

Stocks at 52 wk High

| Scrip | Cmp |
|-----------------|---------|
| Can Fin Homes | 730.00 |
| CRISIL | 2227.40 |
| Dr Reddys Labs | 3797.40 |
| Marico Kaya Ent | 2277.60 |
| Thomas Cook | 235.10 |

Stocks at 52 wk Low

| Scrip | Cmp |
|----------------|------|
| Glodyne Techno | 1.60 |
| -- | -- |
| -- | -- |
| -- | -- |
| -- | -- |

FII Activity

| Date | Figures in crore |
|-------|------------------|
| 06/04 | 936.81 |
| 07/04 | 143.98 |
| 08/04 | -479.18 |
| 09/04 | 193.81 |
| 10/04 | 362.79 |
| Total | 1158.21 |

DII Activity

| Date | Figures in crore |
|-------|------------------|
| 06/04 | -170.03 |
| 07/04 | -326.06 |
| 08/04 | 382.54 |
| 09/04 | 492.79 |
| 10/04 | -135.18 |
| Total | 244.06 |

Weekly Stock Idea

| Scrip | B/S | Cmp | Tgt |
|-------------|-----|-----|-----|
| SAIL | B | 75 | 81 |
| SSLT | B | 202 | 214 |
| JISLJALEQS | B | 67 | 71 |
| HIL | B | 667 | 745 |
| FEDDERLLOYD | B | 82 | 94 |

Buy on dips & Sell on rise with Stop-loss of 3%

Volume Breakout Stocks

| Scrip | Cmp |
|---------------|---------|
| Network 18 | 63.70 |
| Reliance Comm | 71.95 |
| Intellect | 137.70 |
| ICRA | 4688.65 |
| Elder Pharma | 116.65 |

Week Ahead

MAJOR RESULTS/AGM MEETING THIS WEEK:

14 APR: DCBBANK, ACC, 8KMILES

15 APR: INFOMEDIA, TV18BRDCST, NETWORK18, RIIL

16 APR: GRUH, TCS, MINDTREE, INDUSINDBK

17 APR: CRISIL, VSTIND, RSSOFTWARE, RELIANCE, DELTACORP, ATFL

VISIT US AT: WWW.INDIRATRADE.COM

Disclaimer

This report is for private circulation within the Indira Group. This report is strictly confidential and for information of the selected recipient only and may not be altered in any way, transmitted to, copied or distributed, in part or in whole, to any other person or to the media or reproduced in any form. This report should not be construed as an offer or solicitation to buy or sell any securities or any interest in securities. It does not constitute a personal recommendation or take into account the particular investment objectives, financial situations, or any such factor. The information, opinions estimates and forecasts contained here have been obtained from, or are based upon, sources we believe to be reliable, but no representation of warranty, express or implied, is made by us to their accuracy or completeness. Opinions expressed are our current opinions as of the date appearing on this material only and are subject to change without notice.