

## Top Stories This Week

- SEBI May Issue Paper On Listing Norms For Start-ups : PTI
- TRAI releases consultation paper on regulatory framework for over-the-top (OTT) services.
- Fortis Healthcare to Sell Singapore Hospital To Concord Medical Services For \$40.1 m.
- Delhi Govt Bans Sale, Purchase & Storage Of Chewable Tobacco In All Forms: PTI
- Executive committee of SBI approves divestment in SBI Life by up to 10%
- SEBI issues discussion paper on alternate capital raising platform. Platform to raise fund to be initially applicable in software product development & e-commerce: SEBI
- MCX Sells 90.17 Lakh Warrants Of Metropolitan Stock Exchange To IL&FS.
- CCI approves Zuari's open offer to acquire additional stake in Mangalore Chemicals & Fertilizers.
- Australian Environmental lobby dragged Adani Enterprises to court for Charmichael Coal mine project – BL
- eClerx Services To Acquire Italian Co CLX Europe For Max 25 m Euros In All-cash Deal.
- Canara Bank to raise funds from LIC. LIC to subscribe upto 40m equity shares on a pref basis - BS

## Weekly Indices Change

Index	Close	P. Close	Chg. (%)
SENSEX	28260	27458	2.92
NIFTY	8586	8341	2.94
MIDCAP	10750	10359	3.77
SMLCAP	11146	10440	6.76
METAL	9542	9328	2.29
OIL&GAS	9358	9123	2.58
AUTO	19465	18844	3.30
TECK	6225	6167	0.94
BANDEX	21360	20664	3.37
IT	11277	11313	-0.32
FMCG	7877	7627	3.28
HC	17683	16952	4.31
PSU	7679	7430	3.35
CD	10459	10350	1.05
POWER	2137	2092	2.15
CG	17440	16900	3.20
REALTY	1691	1630	3.74

## Global Indices

DOW	17763	17712	0.29
NASDAQ	4886	4891	-0.10
FTSE	6833	6855	-0.32
NIKKEI	19435	19387	0.25
HANGSENG	25275	24830	1.79

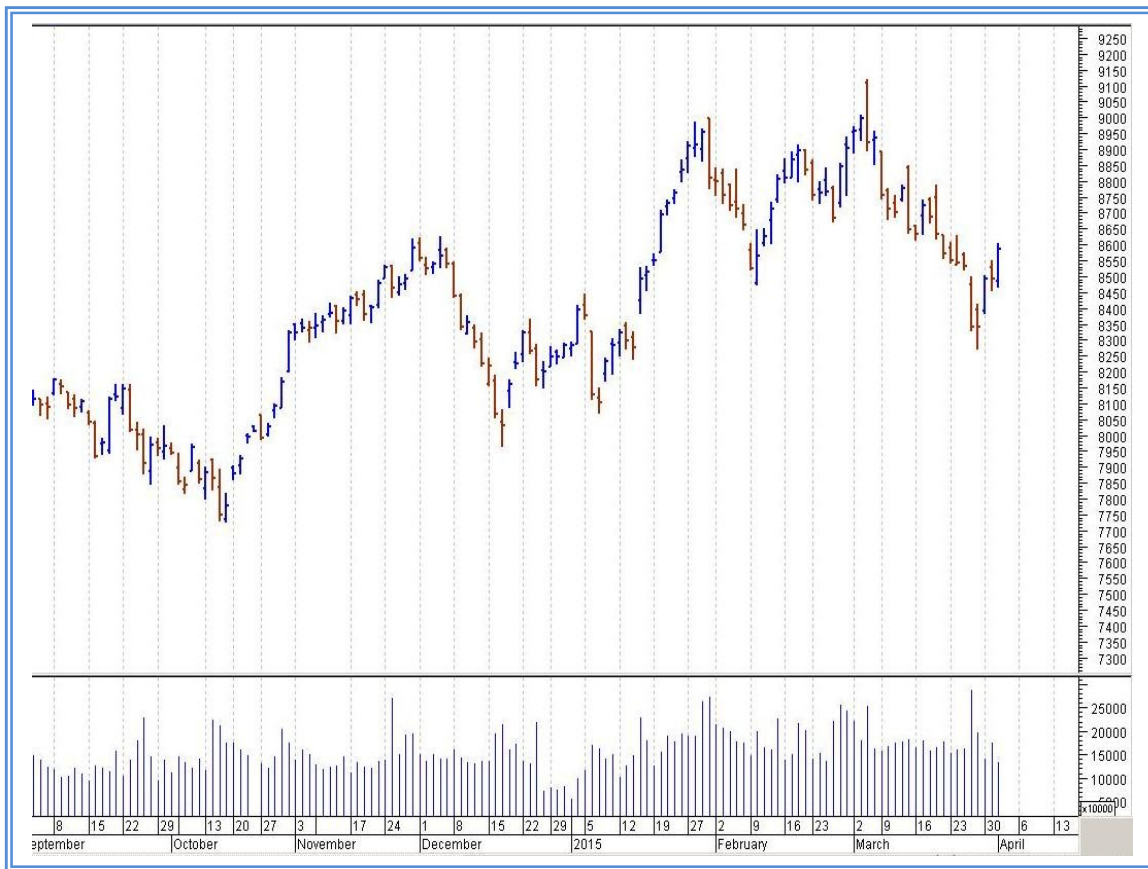
## Top Gainers Weekly

Scrip	Price	% Chg
AXISCADES Engineer	339.65	38.69
RPG Life Sciences	168.50	21.40
Century Textiles	675.35	20.95
Walchandnagar	205.20	20.49
Jindal Saw	69.50	17.20

## Top Losers Weekly

Scrip	Price	% Chg
Ipca Laboratories	643.45	16.39
Bhushan Steel Ltd.	64.00	10.36
Jindal Stainless	35.10	7.02
PC Jeweller Ltd.	321.15	6.57
Punj. NationBak	151.95	6.03

## Nifty Corner



Support & Resistance						
S3	S2	S1	Nifty	R1	R2	R3
8350	8400	8450	8586	8650	8700	8750
Moving Averages						
20DMA		50DMA		100DMA		200DMA
8625		8710		8525		8165

## Market Commentary

Key benchmark indices edged higher in the truncated trading week ended Wednesday, 1 April 2015. The barometer index, the S&P BSE Sensex, regained the psychological 28,000 level during the week. The market logged gains in two out of the three trading sessions of the week. The BSE Small-Cap and the BSE Mid-Cap indices outperformed the Sensex during the week. For the next week Nifty likely to trade in the range between 8700 - 8750 in the upper side and 8400 - 8350 in the lower side.

Stocks at 52 wk High

Scrip	Cmp
BPCL	804.20
Century	675.35
Idea Cellular	189.65
Lupin	2037.50
Sun Pharma	1081.15

Stocks at 52 wk Low

Scrip	Cmp
Rain Industries	28.40
Seamec	88.85
Sirpur Paper	10.75
Techindia Nirm	3.40
--	--

FII Activity

Date	Figures in crore
30/03	-240.34
31/03	356.07
01/04	209.87
02/04	--
03/04	--
Total	325.6

DII Activity

Date	Figures in crore
30/03	651.67
31/03	283.71
01/04	197.25
02/04	--
03/04	--
Total	1132.63

Weekly Stock Idea

Scrip	B/S	Cmp	Tgt
FORTIS	B	169	195
ROLTA	B	171	192
SHAKTIPUMP	B	214	245
CANBK	B	381	415
SUNPHARMA	B	1081	1135

Buy on dips & Sell on rise with Stop-loss of 3%

Volume Breakout Stocks

Scrip	Cmp
Chambal Fert	72.65
Tata Metaliks	135.30
SMS Pharma	543.95
INOX Leisure	173.50
Tata Sponge Iron	847.60

Week Ahead

MAJOR RESULTS/AGM MEETING THIS WEEK:

07 APR: GMBREW

08 APR: SKFINDIA

09 APR: ADVANTA, CMC, BAJAJCORP

10 APR: CLNINDIA

**VISIT US AT: [WWW.INDIRATRADE.COM](http://WWW.INDIRATRADE.COM)**

**Disclaimer**

This report is for private circulation within the Indira Group. This report is strictly confidential and for information of the selected recipient only and may not be altered in any way, transmitted to, copied or distributed, in part or in whole, to any other person or to the media or reproduced in any form. This report should not be construed as an offer or solicitation to buy or sell any securities or any interest in securities. It does not constitute a personal recommendation or take into account the particular investment objectives, financial situations, or any such factor. The information, opinions estimates and forecasts contained here have been obtained from, or are based upon, sources we believe to be reliable, but no representation of warranty, express or implied, is made by us to their accuracy or completeness. Opinions expressed are our current opinions as of the date appearing on this material only and are subject to change without notice.