

Top Stories This Week

- BSNL undertakes ₹ 1,000 cr investment plan, to launch Skype facility & set up wi-fi hotspots at tourist places: PTI
- HDIL eyes ₹ 750 Cr from sale of non core assets – FinEx
- CCI approves merger of Shasun Pharma with Strides Arcolab.
- CCI Approves Sun Pharma-Ranbaxy's Plan To Sell Brands To Emcure, Approves Divestment Of All 7 Products To Emcure.
- Essar Oil has offered a strategic stake of 50% minus 1 share in Essar Oil to Rosneft, Russia – ET Co expects valuation at ₹ 48,000 cr (\$7-8 billion)
- Suzlon to sell SE Forge & other assets to raise Rs 2500 cr – TOI
- NDMC to auction Taj Mansingh within 3 months. IHCL gets a 3 month extension for operating the Taj Mansingh
- Cadila Healthcare Acquires 50% Stake In Zydus BSV Pharma From Bharat Serums & Vaccines. Zydus BSV Now Becomes 100% Subsidiary Of Co.
- Adani Group: Local landowners have rejected Co's \$16.5-billion mine, rail, and port projects in Queensland, Aus. – BS.
- Dr Reddy Expanding its US offerings from basic generic pills to generic injectable drugs. Co could make acquisitions of \$1 bn to boost growth – ET

Weekly Indices Change

Index	Close	P. Close	Chg. (%)
SENSEX	27458	28261	-2.84
NIFTY	8341	8570	-2.67
MIDCAP	10359	10625	-2.50
SMLCAP	10440	10859	-3.86
METAL	9328	9627	-3.11
OIL&GAS	9123	9418	-3.13
AUTO	18844	19198	-1.84
TECK	6167	6364	-3.10
BANDEX	20664	21346	-3.19
IT	11313	11699	-3.30
FMCG	7627	7870	-3.09
HC	16952	17049	-0.57
PSU	7430	7684	-3.31
CD	10350	10407	-0.55
POWER	2092	2139	-2.20
CG	16900	17061	-0.94
REALTY	1630	1677	-2.80

Global Indices

DOW	17712	18127	-2.29
NASDAQ	4891	5026	-2.69
FTSE	6855	7022	-2.38
NIKKEI	19387	19560	-0.88
HANGSENG	24830	24375	1.87

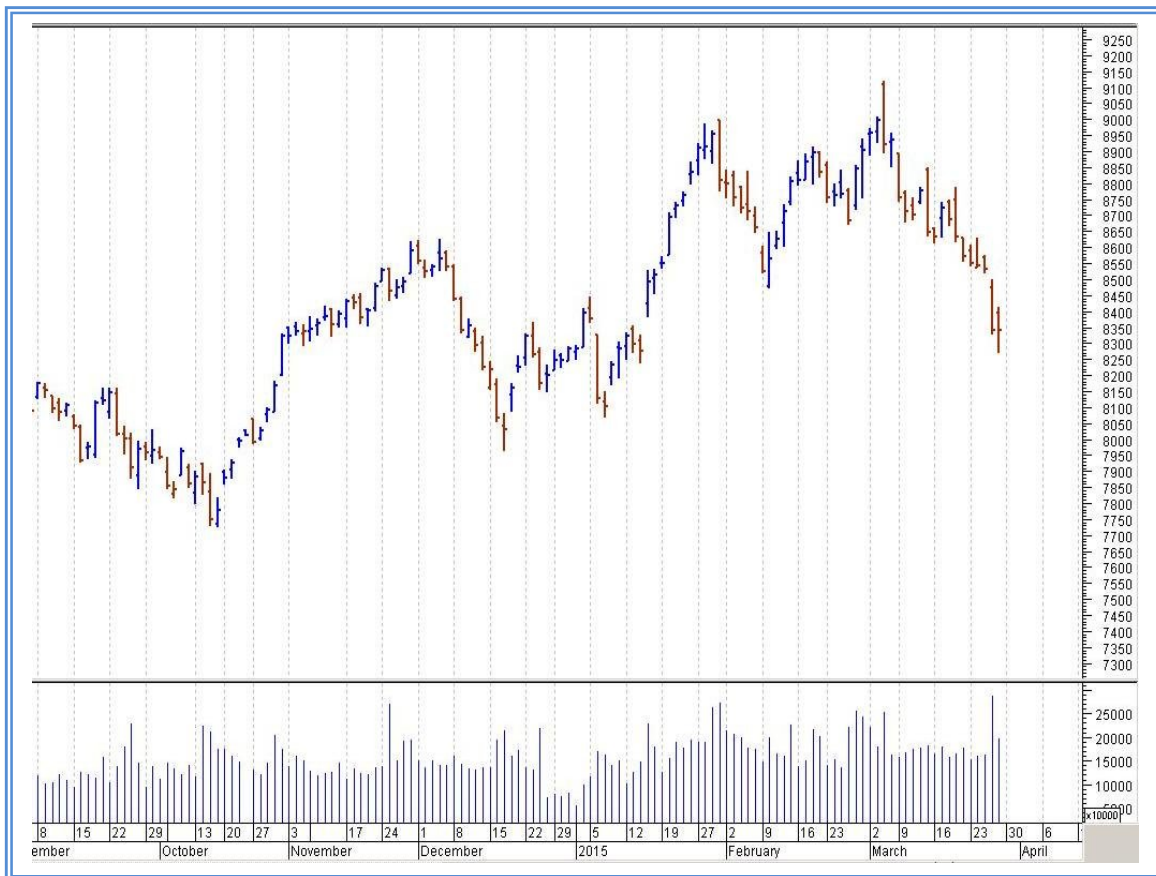
Top Gainers Weekly

Scrip	Price	% Chg
RPG Life Sciences	155.60	24.58
AXISCADES Engineer	309.25	16.50
Hexaware technologies	311.20	11.88
eClerx Services	1572.40	9.68
Sasken Comm.Tech.	217.95	7.07

Top Losers Weekly

Scrip	Price	% Chg
Tata Sponge Iron	675.55	19.03
Titagarh Wagons Ltd.	548.00	18.60
Walchandnagar	177.15	18.36
Ipca Laboratorie	644.65	17.03
Punj Lloyd	28.30	15.14

Nifty Corner



Support & Resistance						
S3	S2	S1	Nifty	R1	R2	R3
8150	8200	8250	8341	8450	8550	8600
Moving Averages						
20DMA		50DMA		100DMA		200DMA
8695		8720		8530		8165

Market Commentary

The market slumped last week on weak global cues. The barometer index, the S&P BSE Sensex, and the 50-unit CNX Nifty hit their lowest level in more than 10 weeks. The Sensex slipped below the psychological 28,000 mark. Global stocks fell as weak US durable goods data sparked concerns about the pace of economic recovery in the world's biggest economy. Geopolitical worries triggered by escalating conflict in Yemen also weighed on global stocks. For the next week nifty likely to trade in the range between 8550 – 8600 in the upper side and 8200 – 8150 in the lower side.

Stocks at 52 wk High

Scrip	Cmp
AXISCADESEngg	309.25
Hexaware Tech	311.20
Idea Cellular	172.30
KRBL	153.90
RPG Life	155.60

Stocks at 52 wk Low

Scrip	Cmp
Bank of India	198.55
Cairn India	215.45
L&T Finance	61.35
Oil India	457.30
Reliance	811.70

FII Activity

Date	Figures in crore
23/03	417.41
24/03	737.86
25/03	813.19
26/03	-521.23
27/03	-320.52
Total	1126.71

DII Activity

Date	Figures in crore
23/03	403.91
24/03	-631.67
25/03	96.52
26/03	687.09
27/03	674.76
Total	1230.61

Weekly Stock Idea

Scrip	B/S	Cmp	Tgt
FORTIS	B	163	190
KOLTEPATIL	B	215	240
APOLLTYRE	B	160	175
STRTECH	B	51	58
ASHOKLEY	B	70	78

Buy on dips & Sell on rise with Stop-loss of 3%

Volume Breakout Stocks

Scrip	Cmp
City Union Bank	95.80
Info Edge	817.85
BF Investment	139.80
Mahindra Life	461.00
ILandFS Engg	84.90

Week Ahead

MAJOR RESULTS/AGM MEETING THIS WEEK:

30 Mar: CIGNITITECH, KSBPUMPS, MERCK

31 Mar: ARSSINFRA, GAEL

VISIT US AT: WWW.INDIRATRADE.COM

Disclaimer

This report is for private circulation within the Indira Group. This report is strictly confidential and for information of the selected recipient only and may not be altered in any way, transmitted to, copied or distributed, in part or in whole, to any other person or to the media or reproduced in any form. This report should not be construed as an offer or solicitation to buy or sell any securities or any interest in securities. It does not constitute a personal recommendation or take into account the particular investment objectives, financial situations, or any such factor. The information, opinions estimates and forecasts contained here have been obtained from, or are based upon, sources we believe to be reliable, but no representation of warranty, express or implied, is made by us to their accuracy or completeness. Opinions expressed are our current opinions as of the date appearing on this material only and are subject to change without notice.