

Top Stories This Week

- Rajya Sabha passes Mines and Minerals Development and Regulation (MMDR) Amendment Bill, 2015 and Coal Bill, on Friday.
- Standard life may raise stake in HDFC JV to 35% - ET
- ITC to set up 20 factories for FMCG biz to garner ` 1 lk cr in revenue by 2030: PTI
- Piramal Ent in advanced negotiations with Apollo Hospitals to buy latter's fledgling healthcare software venture Health Super Hi Way – ET
- Wipro Takes Minority Stake In Drivestream, A Management & IT Consulting Firm Invests \$5 m CNBC-TV18 Alert.
- PVR Co ties up with Vatika Group for 26 Cinema screens in Gurgaon, Jaipur & Ambala – FinEx
- Axis Bank cuts deposit rates by 25 bps – TOI
- ICICI Bank exits Russia, sells subsidiary IBEL on Mar 17 – FinEx
- Govt May Give 9 Mines Being Re-examined To Coal India: PTI sources.
- UPL in agreement to subscribe to 40% shares in Brazilian Co Sinagro Group, a Distributor Of Farm Inputs: CNBC-TV18
- SEBI Asks Fin Tech To Issue Advisory To Investors On NSEL Matter.

Weekly Indices Change

| Index | Close | P. Close | Chg. (%) |
|---------|-------|----------|----------|
| SENSEX | 28261 | 28503 | -0.85 |
| NIFTY | 8570 | 8647 | -0.89 |
| MIDCAP | 10625 | 10794 | -1.57 |
| SMLCAP | 10859 | 11209 | -3.12 |
| METAL | 9627 | 9710 | -0.85 |
| OIL&GAS | 9418 | 9422 | -0.04 |
| AUTO | 19198 | 19462 | -1.36 |
| TECK | 6364 | 6370 | -0.09 |
| BANDEX | 21346 | 21522 | -0.82 |
| IT | 11699 | 11621 | 0.67 |
| FMCG | 7870 | 8095 | -2.78 |
| HC | 17049 | 16842 | 1.23 |
| PSU | 7684 | 7797 | -1.45 |
| CD | 10407 | 10361 | 0.44 |
| POWER | 2139 | 2216 | -3.47 |
| CG | 17061 | 17380 | -1.84 |
| REALTY | 1677 | 1739 | -3.57 |

Global Indices

| | | | |
|----------|-------|-------|------|
| DOW | 18127 | 17749 | 2.13 |
| NASDAQ | 5026 | 4871 | 3.18 |
| FTSE | 7022 | 6740 | 4.18 |
| NIKKEI | 19560 | 19254 | 1.59 |
| HANGSENG | 24375 | 23823 | 2.32 |

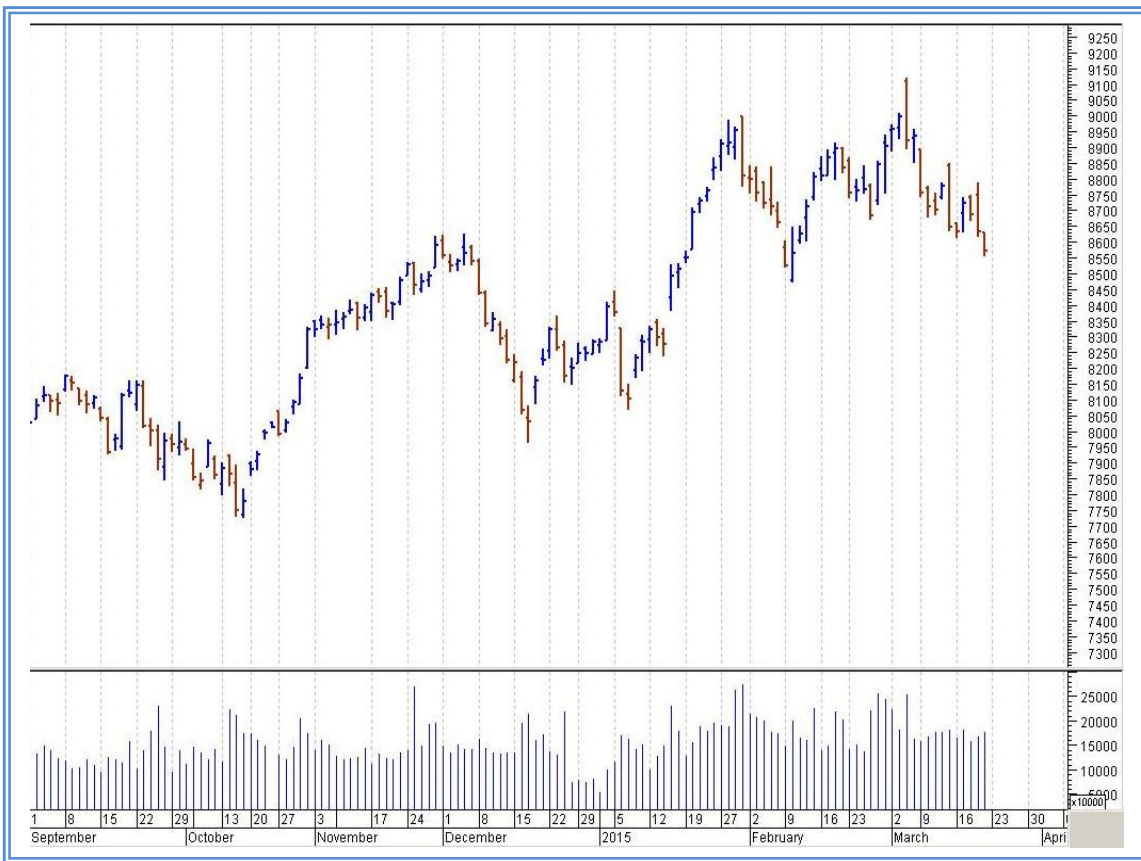
Top Gainers Weekly

| Scrip | Price | % Chg |
|---------------------|---------|-------|
| Just Dial | 1382.40 | 21.33 |
| Suven Life Sciences | 284.40 | 16.70 |
| Marico Kaya Enter | 1587.35 | 16.64 |
| DLF Ltd. | 159.90 | 10.24 |
| PC Jeweller Ltd. | 335.80 | 9.90 |

Top Losers Weekly

| Scrip | Price | % Chg |
|----------------------|--------|-------|
| Titagarh Wagons Ltd. | 571.15 | 28.22 |
| Mastek Limited | 397.55 | 17.14 |
| Amtek India | 46.50 | 15.45 |
| Jindal St & Pwr | 164.55 | 13.78 |
| HDIL | 99.20 | 13.70 |

Nifty Corner



| Support & Resistance | | | | | | |
|----------------------|------|-------|-------|--------|------|--------|
| S3 | S2 | S1 | Nifty | R1 | R2 | R3 |
| 8350 | 8400 | 8500 | 8570 | 8650 | 8750 | 8850 |
| Moving Averages | | | | | | |
| 20DMA | | 50DMA | | 100DMA | | 200DMA |
| 8765 | | 8705 | | 8515 | | 8145 |

Market Commentary

Key indices edged lower in the week ended 20 March 2014, weighed by the recent selling of Indian stocks by the foreign portfolio investors (FPIs). The stock prices were under pressure as traders and investors resorted to year-end profit booking. The market fell in four out of five trading sessions in the week ended 20 March 2015. For the next week nifty likely to trade in the range between 8750 -8850 in the upper side and 8500 – 8400 in the lower side.

Stocks at 52 wk High

| Scrip | Cmp |
|-----------------|---------|
| Essar Ports | 137.05 |
| Glenmark | 831.35 |
| Hitachi Home | 1330.80 |
| Marico Kaya Ent | 1587.35 |
| Pidilite Ind | 621.30 |

Stocks at 52 wk Low

| Scrip | Cmp |
|--------------|--------|
| Dena Bank | 50.30 |
| Elder Pharma | 101.70 |
| JK Bank | 103.50 |
| UCO Bank | 65.30 |
| Welspun Corp | 60.65 |

FII Activity

| Date | Figures in crore |
|-------|------------------|
| 16/03 | -762.55 |
| 17/03 | 265.52 |
| 18/03 | -457.43 |
| 19/03 | 1428.72 |
| 20/03 | 354.59 |
| Total | 828.85 |

DII Activity

| Date | Figures in crore |
|-------|------------------|
| 16/03 | 158.65 |
| 17/03 | -243.69 |
| 18/03 | -882.99 |
| 19/03 | 53.46 |
| 20/03 | -219.2 |
| Total | -1133.77 |

Weekly Stock Idea

| Scrip | B/S | Cmp | Tgt |
|------------|-----|------|------|
| IRB | B | 241 | 265 |
| POWERGRID | B | 148 | 160 |
| HDFCBANK | B | 1056 | 1095 |
| ESSARPORTS | B | 137 | 165 |
| MASTEK | B | 397 | 435 |

Buy on dips & Sell on rise with Stop-loss of 3%

Volume Breakout Stocks

| Scrip | Cmp |
|-----------------|---------|
| Alstom T&D | 581.20 |
| Bajaj Finserv | 1379.80 |
| Vakrangee | 110.10 |
| India Infoline | 184.05 |
| Crompton Greave | 164.50 |

Week Ahead

MAJOR RESULTS/AGM MEETING THIS WEEK:

26 MAR: BFUTILITIE

27 MAR: GAMMNINFRA

VISIT US AT: WWW.INDIRATRADE.COM

Disclaimer

This report is for private circulation within the Indira Group. This report is strictly confidential and for information of the selected recipient only and may not be altered in any way, transmitted to, copied or distributed, in part or in whole, to any other person or to the media or reproduced in any form. This report should not be construed as an offer or solicitation to buy or sell any securities or any interest in securities. It does not constitute a personal recommendation or take into account the particular investment objectives, financial situations, or any such factor. The information, opinions estimates and forecasts contained here have been obtained from, or are based upon, sources we believe to be reliable, but no representation of warranty, express or implied, is made by us to their accuracy or completeness. Opinions expressed are our current opinions as of the date appearing on this material only and are subject to change without notice.