

Top Stories This Week

- New CPI moves up to 5.11% in Jan; Dec IIP slows to 1.7%.
- India New Method GDP grew 7.5% in Q3; full year seen at 7.4%
- Govt Official Says Cabinet Approved Stake Sale In BHEL, NALCO & NMDC: NewsRise
- Vakrangee appointed National Business Correspondent across India for State Bank of India
- Coal India Q3: Cons Net Profit Down 16.2% At 3,262.5 Cr Vs 3,894 Cr (YoY). Cons Net Sales Up 4.9% At `17,763 Cr Vs 16,928 Cr (YoY)
- Asian Paints Says Arm Completes Acquisition Of 51% Stake In Ethiopia's Kadisco Paint For \$18.95mn.
- DLF Q3 Cons Net Profit Down 9.3% At `131.8 Cr Vs 145.3 Cr (YoY). Cons Revenue Down 4.9% At 1,956.7 Cr Vs `2,058 Cr (YoY)
- Facebook is set to launch Internet.org, an initiative to provide internet access in India through a tie-up with Reliance Communications – ET
- CCI orders fresh probe against DLF. CCI Prima-Facie Finds Competition Law Violation In Development Of Gurgaon Housing Units.
- Jet Airways Q3 Net Profit At `63.1 Cr Vs Loss Of `267.9 Cr (YoY) Total Income Up 11.4% At `5,051 Cr

Weekly Indices Change

Index	Close	P. Close	Chg. (%)
SENSEX	29094	28717	1.31
NIFTY	8805	8661	1.66
MIDCAP	10740	10490	2.38
SMLCAP	11239	11077	1.46
METAL	10365	10158	2.04
OIL&GAS	10039	10087	-0.48
AUTO	19586	19051	2.81
TECK	6371	6303	1.08
BANKEKX	22187	21535	3.03
IT	11811	11623	1.62
FMCG	8409	8290	1.44
HC	15857	15219	4.19
PSU	8018	7956	0.78
CD	10533	10341	1.86
POWER	2179	2104	3.56
CG	16896	16721	1.05
REALTY	1721	1746	-1.43

Global Indices

DOW	18019	17824	1.09
NASDAQ	4893	4744	3.14
FTSE	6873	6853	0.29
NIKKEI	17913	17648	1.50
HANGSENG	24682	24679	0.01

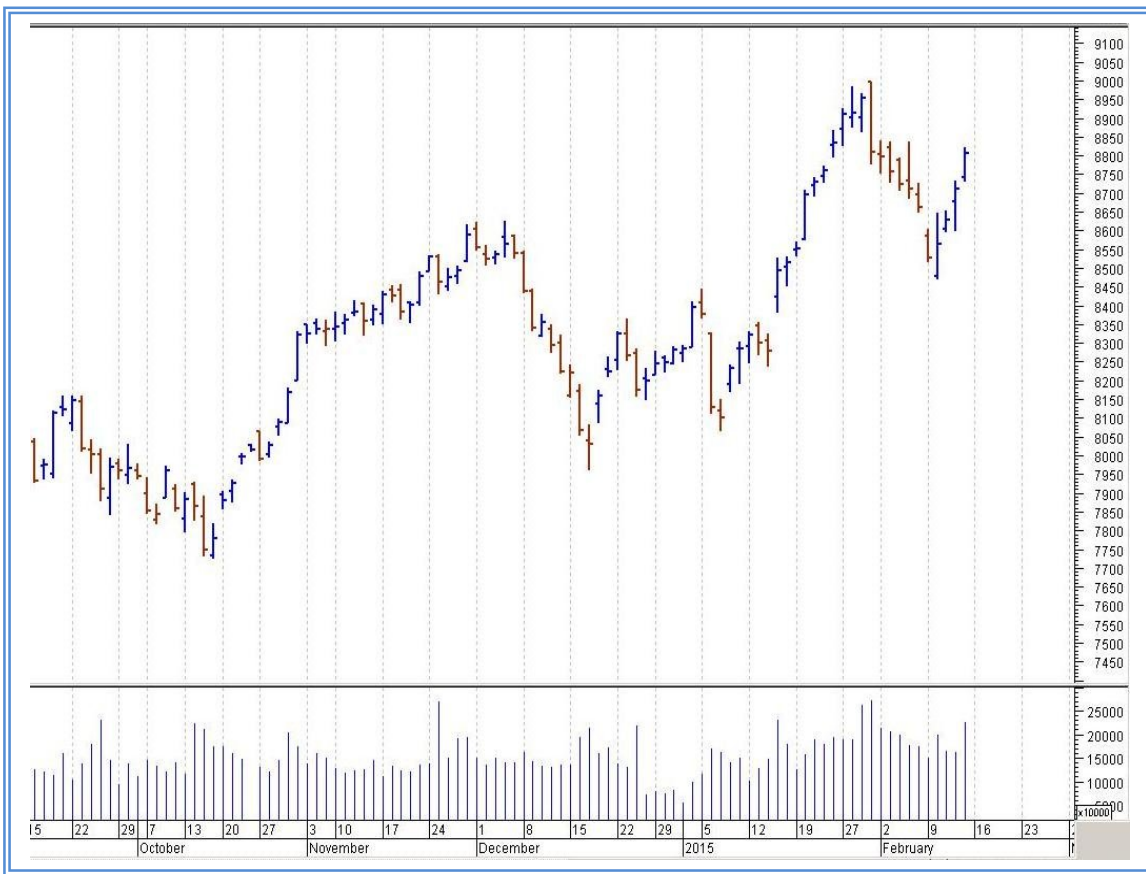
Top Gainers Weekly

Scrip	Price	% Chg
Wockhardt Ltd.	1520.25	22.82
Fortis Healthcare	138.90	22.70
NCC	82.15	15.38
Suzlon Energy Ltd.	19.20	12.61
Century Plyboard	208.30	11.57

Top Losers Weekly

Scrip	Price	% Chg
Jammu & Kashmir Bank	110.15	22.43
Apollo Tyres	182.70	19.46
Future Retail	116.65	16.65
PC Jeweller Ltd.	234.80	13.21
Ceat Ltd.	718.65	10.67

Nifty Corner



Support & Resistance						
S3	S2	S1	Nifty	R1	R2	R3
8500	8650	8700	8805	8900	8950	9050
Moving Averages						
20DMA		50DMA		100DMA		200DMA
8725		8455		8315		7925

Market Commentary

Indian equity markets registered impressive gains in the week ended Friday, 13 February 2015, with barometer index, the S&P BSE Sensex, regaining the psychological 29,000 level. The Sensex gained in four out of five trading sessions. BSE Mid-Cap and BSE Small-Cap indices, both, outperformed the Sensex. After a sharp setback at the onset of the week triggered by exit polls predicting victory for the Aam Aadmi Party (AAP) in assembly elections in Delhi, key benchmark indices bounced back later as investors bet Prime Minister Narendra Modi will accelerate policy measures to boost economic growth after the actual election result out on Tuesday, 10 February 2015, showed that Bharatiya Janata Party (BJP) was trounced in assembly election in Delhi. For the next week Nifty likely to trade in the range between 8900 – 8950 in the upper side and 8650 – 8500 in the lower side.

Stocks at 52 wk High

Scrip	Cmp
Adani Enterpris	671.90
Bharat Forge	1188.15
Infosys	2296.10
Power Grid Corp	151.50
Wockhardt	1520.25

Stocks at 52 wk Low

Scrip	Cmp
Arvind Remedies	19.35
DB (Int) Stock	49.80
Parenteral Drug	19.10
Sharon Bio Medi	22.85
Venkys	373.15

FII Activity

Date	Figures in crore
09/02	-660.30
10/02	-1261.19
11/02	-371.27
12/02	-406.28
13/02	390.26
Total	-2308.78

DII Activity

Date	Figures in crore
09/02	469.55
10/02	851.32
11/02	147.49
12/02	705.53
13/02	95.82
Total	2269.71

Weekly Stock Idea

Scrip	B/S	Cmp	Tgt
SRTRANSFIN	B	1260	1320
JSWSTEEL	B	986	1030
SIEMENS	B	1203	1240
PRATIBHA	B	46	51
WABAG	B	1621	1680

Buy on dips & Sell on rise with Stop-loss of 3%

Volume Breakout Stocks

Scrip	Cmp
PVR	718.00
Den Networks	120.20
Lupin	1679.45
IOC	310.25
Oberoi Realty	273.15

Week Ahead

MAJOR RESULTS/AGM MEETING THIS WEEK:

18 FEB: AMBUJACEM, SKFINDIA, MAWANASUG

19 FEB: DENORA

20 FEB: KSBPUMPS, SANOFI

[VISIT US AT: WWW.INDIRATRADE.COM](http://WWW.INDIRATRADE.COM)

Disclaimer

This report is for private circulation within the Indira Group. This report is strictly confidential and for information of the selected recipient only and may not be altered in any way, transmitted to, copied or distributed, in part or in whole, to any other person or to the media or reproduced in any form. This report should not be construed as an offer or solicitation to buy or sell any securities or any interest in securities. It does not constitute a personal recommendation or take into account the particular investment objectives, financial situations, or any such factor. The information, opinions estimates and forecasts contained here have been obtained from, or are based upon, sources we believe to be reliable, but no representation of warranty, express or implied, is made by us to their accuracy or completeness. Opinions expressed are our current opinions as of the date appearing on this material only and are subject to change without notice.