

## Top Stories This Week

- IOC to form JV for Rs. 5,150-crore LNG terminal project in TN within a month.
- 100% FDI in medical devices policy to come into effect from January 21.
- Maruti Suzuki hikes product prices by up to Rs 31,600 across models.
- Videocon d2h to sell stake worth up to USD 375 m to US-based Silver Eagle Acquisition Corp.
- Tata Motors ' JLR UK December auto sales up 25 percent at 5,008 units (YoY).
- Tata steel ferrochrome 50,000 TPA capacity plant in Gopalpur to start by July.
- DLF files fresh undertaking in Supreme Court to submit Rs 480 crore fine in tranches.
- Commerce secretary says - Government not to impose further curbs on gold imports.
- Government considering higher sugar export subsidy of Rs 4,000/tonne.
- Infosys Q3 profit increased 5% to Rs. 3250 cr. Revenues increased 3.4% to Rs. 13796 cr.
- Network 18 sells multiplex business to Carnival films: ET

## Weekly Indices Change

Index	Close	P. Close	Chg. (%)
SENSEX	27458	27887	-1.54
NIFTY	8284	8395	-1.32
MIDCAP	10426	10530	-0.99
SMLCAP	11198	11308	-0.97
METAL	10487	10966	-4.37
OIL&GAS	9839	9917	-0.79
AUTO	18835	18837	-0.01
TECK	5899	5927	-0.47
BANKEK	21346	21830	-2.22
IT	10752	10721	0.29
FMCG	7835	7776	0.76
HC	14691	14720	-0.20
PSU	8144	8312	-2.02
CD	9708	9758	-0.51
POWER	2060	2115	-2.60
CG	15462	15760	-1.89
REALTY	1531	1571	-2.55

## Global Indices

DOW	17737	17832	-0.53
NASDAQ	4704	4726	-0.47
FTSE	6501	6547	-0.70
NIKKEI	17197	17450	-1.45
HANGSENG	23919	23857	0.26

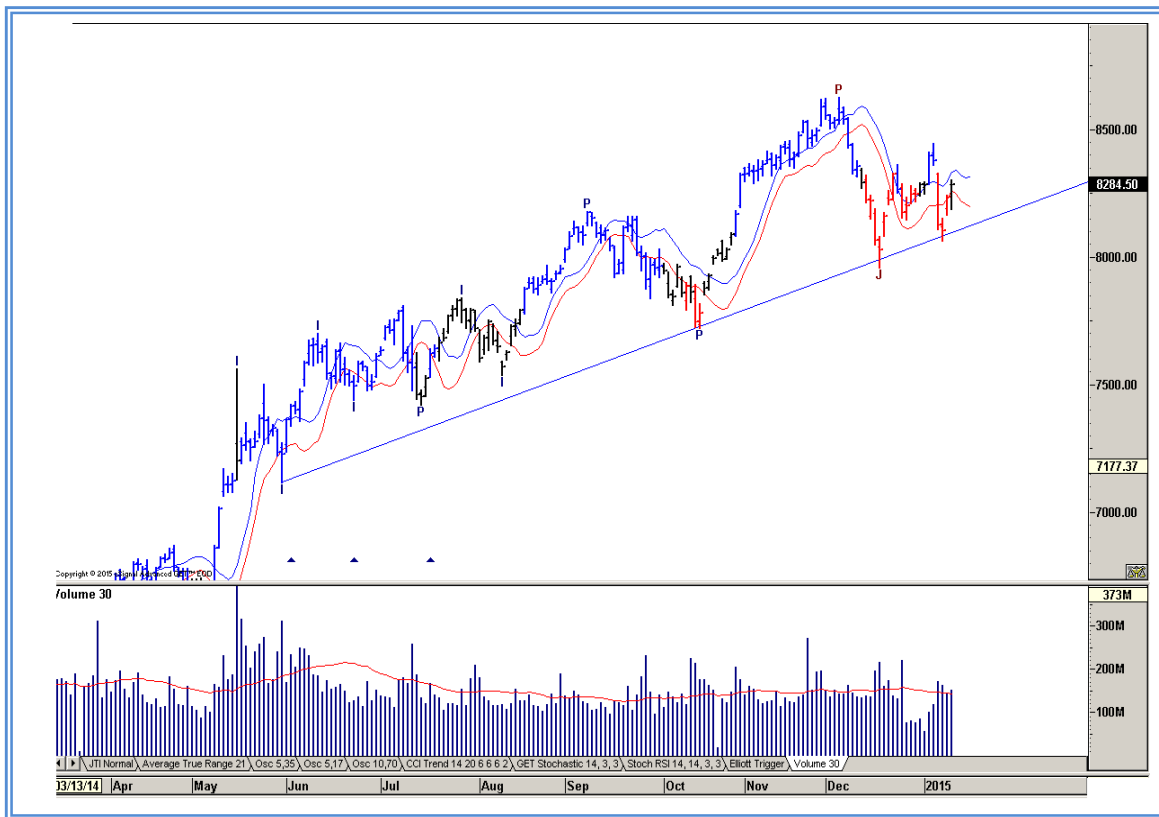
## Top Gainers Weekly

Scrip	Price	% Chg
Intellect Design	115.70	34.30
Can Fin Homes	657.30	31.92
GIC Housing Finance	271.20	23.58
Videocon Industries	190.90	18.02
Hindustan Unilever LEV	864.60	14.00

## Top Losers Weekly

Scrip	Price	% Chg
Berger Paints I	244.60	39.66
D B Realty Ltd.	68.40	10.82
IRB Infrastructure D	238.05	9.78
Amtek India Ltd.	70.85	8.87
NMDC Ltd.	135.35	8.70

## Nifty Corner



Support & Resistance						
S3	S2	S1	Nifty	R1	R2	R3
8000	8050	8100	8284	8350	8450	8500
Moving Averages						
20DMA		50DMA		100DMA		200DMA
8225		8335		8145		7685

## Market Commentary

Political uncertainty about Greece along with plummeting oil prices weighed on the domestic bourses in the week ended Friday, 9 January 2015. However, indices cut losses in last two trading days of the week. Overall, the market logged declines in three out of five trading sessions in the week just gone by. The barometer index, the S&P BSE Sensex regained the psychological 27,000 level after falling below that level during the week. In the week ended Friday, 9 January 2015, the 30-share S&P BSE Sensex lost 1.54% to settle at 27,458. The 50-unit CNX Nifty lost 1.32% to settle at 8,284. For the next week Nifty likely to trade in the range between 8305 – 8450 in the upper side and 8050 – 8000 in the lower side.

Stocks at 52 wk High

Scrip	Cmp
Adani Ports	331.15
Asian Paints	812.50
Dish TV	67.55
Exide Ind	189.50
HUL	864.60

Stocks at 52 wk Low

Scrip	Cmp
Canara Robeco	2589.00
ESS DEE	332.60
KSS	3.90
Reliance Comm	77.05
Rainbow Papers	67.00

FII Activity

Date	Figures in crore
05/01	472.00
06/01	-1570.76
07/01	-1073.18
08/01	-466.78
09/01	-297.99
Total	-2936.71

DII Activity

Date	Figures in crore
05/01	-575.74
06/01	1189.65
07/01	601.40
08/01	288.88
09/01	299.53
Total	1803.72

Weekly Stock Idea

Scrip	B/S	Cmp	Tgt
SUNTV	B	353	372
TECHM	B	2680	2750
VOLTAS	B	246	260
CANFINHOME	B	657	715
TATAELXSI	B	672	730

Buy on dips & Sell on rise with Stop-loss of 3%

Volume Breakout Stocks

Scrip	Cmp
Videocon Indust	190.90
Wonderla	326.85
Infosys	2074.45
Finolex Cables	270.45
Oil India	565.20

Week Ahead

MAJOR RESULTS/AGM MEETING THIS WEEK:

12 JAN: CMC, KITEX

13 JAN: RIIL, INDUSINDBK, GEOJITBNPP, DCBBANK, LAKSHVILAS

14 JAN: BAJAJFINSV, YESBANK, TV18BRDCST, NETWORK18, LICHSFIN, BAJFINANCE, NIITTECH,

15 JAN: TCS, PFS, BAJAJHLDNG, BAJAJ-AUTO, DBCORP

16 JAN: DHFL, WIPRO, RELIANCE, NIITLTD, INOXLEISUR, AXISBANK, OBEROIRLTY, RSSOFTWARE

**VISIT US AT: [WWW.INDIRATRADE.COM](http://WWW.INDIRATRADE.COM)**

**Disclaimer**

This report is for private circulation within the Indira Group. This report is strictly confidential and for information of the selected recipient only and may not be altered in any way, transmitted to, copied or distributed, in part or in whole, to any other person or to the media or reproduced in any form. This report should not be construed as an offer or solicitation to buy or sell any securities or any interest in securities. It does not constitute a personal recommendation or take into account the particular investment objectives, financial situations, or any such factor. The information, opinions estimates and forecasts contained here have been obtained from, or are based upon, sources we believe to be reliable, but no representation of warranty, express or implied, is made by us to their accuracy or completeness. Opinions expressed are our current opinions as of the date appearing on this material only and are subject to change without notice.