

Top Stories This Week

- October IIP at -4.2% against 2.5% (MOM). November CPI inflation at 4.3% vs 5.52%(MOM)
- RBI says -Q2 current account deficit (CAD) at 2.1 percent of GDP versus 1.7 percent of GDP (QoQ) versus 1.2 percent of GDP
- Infosys -Founders sold nearly USD 1.1 billion worth of stock in company.
- ONGC to develop 45 drilling wells in KG-D6 basin for Rs 16000 crore:
- ONGC says -Have initiated development of fields in KG-D6 block -Efforts to achieve first gas by mid-2018 and first oil by mid-2019 are ongoing.
- Competition Commission of India (CCI) gives nod to Sun Pharma - Ranbaxy deal with riders.
- Finance ministry official says - Looking to sell stake in NMDC ,National Fertilisers ,RCF , STC , MMTC next fiscal.
- Cabinet allows public sector banks to cut government stake to 52 percent, raise Rs 1.6 lakh crore.
- ONGC Videsh wins offshore oil & gas exploration block in New Zealand.

Weekly Indices Change

Index	Close	P. Close	Chg. (%)
SENSEX	27350	28458	-3.89
NIFTY	8224	8538	-3.68
MIDCAP	10108	10498	-3.71
SMLCAP	11068	11474	-3.54
METAL	10577	11241	-5.91
OIL&GAS	9800	10567	-7.26
AUTO	18674	19350	-3.49
TECK	5695	5992	-4.96
BANDEX	20975	21481	-2.36
IT	10296	10857	-5.17
FMCG	8117	8168	-0.62
HC	14946	14929	0.11
PSU	7978	8313	-4.03
CD	9566	9959	-3.95
POWER	2011	2133	-5.72
CG	15226	16412	-7.23
REALTY	1590	1713	-7.18

Global Indices

DOW	17280	17958	-3.78
NASDAQ	4653	4780	-2.66
FTSE	6300	6742	-6.56
NIKKEI	17371	17920	-3.06
HANGSENG	23249	24002	-3.14

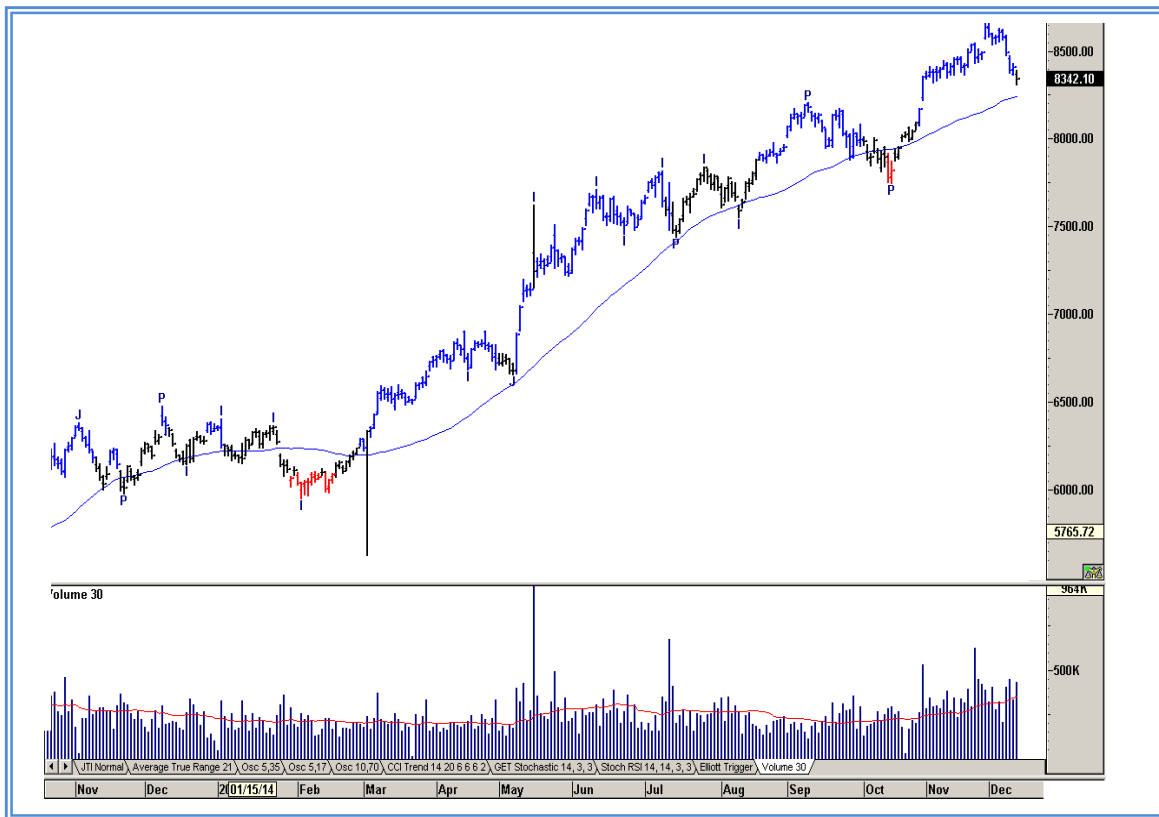
Top Gainers Weekly

Scrip	Price	% Chg
Talwalkars	273.40	16.99
Bharti Infratel Ltd.	340.60	15.22
Network 18 Media	65.35	12.87
Tourism Finance	79.45	9.36
Pfizer Ltd.	2036.05	7.96

Top Losers Weekly

Scrip	Price	% Chg
Aban Offshore	446.90	18.76
Havells India	265.80	18.68
Just Dial	1296.05	15.98
HDIL	68.10	14.18
Tata Steel	402.70	12.81

Nifty Corner



Support & Resistance						
S3	S2	S1	Nifty	R1	R2	R3
8000	8050	8100	8224	8300	8350	8450
Moving Averages						
20DMA		50DMA		100DMA		200DMA
8485		8250		8055		7500

Market Commentary

Key benchmark indices dropped sharply in the week ended Friday, 12 December 2014 on weak global cues. The market logged declines in four out of five trading sessions in the week just gone by. Trading for the week started on a weak note. In the week ended Friday, 12 December 2014, the 30-share S&P BSE Sensex lost 3.89% to settle at 27,350. The 50-unit CNX Nifty lost 3.68% to settle at 8,224. For the next week nifty likely to trade in the range between 8300 – 8350 in the upper side and 8100 – 8050 in the lower side.

Stocks at 52 wk High

Scrip	Cmp
D-Link India	144.30
ITC	395.70
JM Financial	49.90
SKS Microfin	378.25
Wockhardt	1053.9

Stocks at 52 wk Low

Scrip	Cmp
ABG Shipyard	209.90
Cairn India	242.10
Reliance Comm	89.50
Venkys	429.45
Videocon Ind	159.05

FII Activity

Date	Figures in crore
08/12	4984.6
09/12	-221.52
10/12	5.39
11/12	-808.27
12/12	-864.96
Total	3095.24

DII Activity

Date	Figures in crore
08/12	1030.65
09/12	-345.38
10/12	-519.05
11/12	431.93
12/12	323.41
Total	921.56

Weekly Stock Idea

Scrip	B/S	Cmp	Tgt
DABUR	B	235	245
SUNPHARMA	B	844	870
KOTAKBANK	B	1247	1310
HINDPETRO	B	564	590
HDFCBANK	B	932	970

Buy on dips & Sell on rise with Stop-loss of 3%

Volume Breakout Stocks

Scrip	Cmp
Tata Sponge Iron	653.75
D-Link India	144.30
Dewan Housing	410.20
Havells India	265.80
United Spirits	2846.55

Week Ahead

MAJOR RESULTS/AGM MEETING THIS WEEK:

15 DEC: PLETHICO, INDIACEM

16 DEC: ESSAROIL

17 DEC: OMNITECH, HINDOILEXP

18 DEC: UBENGG, GAMMONIND

VISIT US AT: WWW.INDIRATRADE.COM

Disclaimer

This report is for private circulation within the Indira Group. This report is strictly confidential and for information of the selected recipient only and may not be altered in any way, transmitted to, copied or distributed, in part or in whole, to any other person or to the media or reproduced in any form. This report should not be construed as an offer or solicitation to buy or sell any securities or any interest in securities. It does not constitute a personal recommendation or take into account the particular investment objectives, financial situations, or any such factor. The information, opinions estimates and forecasts contained here have been obtained from, or are based upon, sources we believe to be reliable, but no representation of warranty, express or implied, is made by us to their accuracy or completeness. Opinions expressed are our current opinions as of the date appearing on this material only and are subject to change without notice.