

Top Stories This Week

- September IIP At 2.5 percent versus 0.5 percent (MoM). April-September IIP At 2.8 percent.
- October CPI Inflation At 5.52 percent Vs 6.46 percent (MoM). Food Inflation At 5.59 percent Vs 7.67 percent (MoM). WPI inflation at 1.77 Vs 2.38 percent.
- Department Of Industrial Policy & Promotion floats draft cabinet note on FDI in medical devices -DIPP proposes 100 percent FDI through auto route for medical devices.
- L&T Q2 -Standalone PAT At Rs 1042.2 Cr Vs Rs 864.8 Cr (YoY). Standalone Total Income At Rs 12,717Cr Vs Rs 12,308.4 Cr (YoY)
- Coal India Q2: -Net Profit At Rs 2,192 Cr Vs Rs 3,052 Cr (YoY) - Net Sales At Rs 15,678 Cr Vs Rs 15,411 Cr (YoY).
- RBI announces revised regulatory framework for NBFCs. NBFCs must have minimum net owned funds of Rs 1 crore by March 2016 and 2 crore by March 2017.
- BPCL Q2: Net Profit At Rs 464.2 Cr Vs Rs 931 Cr (YoY). Net Sales At Rs 61,978.5 Cr Vs Rs 61,757.4Cr (YOY).
- SBIN Q2: Net Profit At Rs 3096 Cr Vs Rs 2375 Cr (YoY). Net Sales At Rs 13588 Cr Vs Rs 12251Cr (YOY). Net NPA 2.73 vs 2.66
- Tata Motors Q2: Net Profit At Rs 3291 Cr Vs Rs 3542 Cr (YoY). Net Sales At Rs 60564 Cr Vs Rs 56867 Cr (YOY).

Weekly Indices Change

Index	Close	P. Close	Chg. (%)
SENSEX	28046	27867	0.64
NIFTY	8389	8337	0.62
MIDCAP	10154	9999	1.55
SMLCAP	11217	11117	0.90
METAL	11401	11334	0.59
OIL&GAS	10837	11053	-1.95
AUTO	18659	18338	1.75
TECK	6028	6000	0.47
BANKEKX	20118	19854	1.33
IT	10892	10820	0.67
FMCG	7752	7530	2.95
HC	14840	14884	-0.30
PSU	8224	8281	-0.69
CD	9830	9746	0.86
POWER	2123	2134	-0.52
CG	15884	15945	-0.38
REALTY	1669	1642	1.64

Global Indices

DOW	17634	17573	0.35
NASDAQ	4688	4632	1.21
FTSE	6654	6567	1.32
NIKKEI	17490	16880	3.61
HANGSENG	24087	23550	2.28

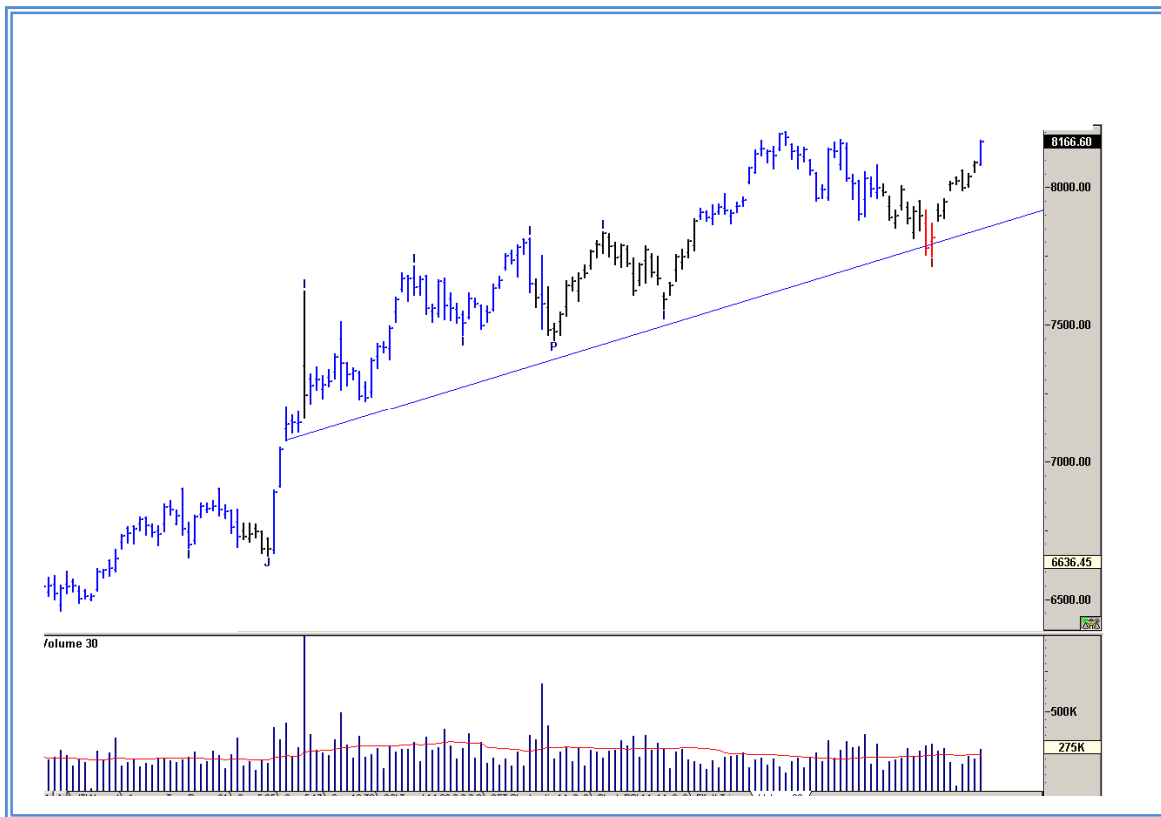
Top Gainers Weekly

Scrip	Price	% Chg
Jindal Saw	98.70	24.23
ING Vysya Bank	770.25	18.69
Ashok Leyland	54.50	16.58
Jubilant Foodworks L	1465.30	16.39
Colgate Palm.	1990.0	16.08

Top Losers Weekly

Scrip	Price	% Chg
Engineers India	225.80	18.38
Bajaj Electrical	233.85	18.36
Finolex Industri	286.15	14.79
Balkrishna Ind.	690.60	13.49
GMR Infrastructure L	20.05	10.89

Nifty Corner



Support & Resistance						
S3	S2	S1	Nifty	R1	R2	R3
8150	8250	8300	8389	8450	8500	8550
Moving Averages						
20DMA		50DMA		100DMA		200DMA
7985		8000		7815		7185

Market Commentary

Key benchmark indices logged modest gains in the week ended Friday, 14 November 2014 on sharp slide in global crude oil prices and data showing steady buying of Indian stocks by foreign portfolio investors. On the last trading day of the week on Friday, 14 November 2014, the barometer index, the S&P BSE Sensex settled at record high above the 28,000 mark. The 50-unit CNX Nifty also closed at record high on that day. For the next week Nifty likely to trade in the range between 8500 - 8550 in the upper side and 8250 - 8150 in the lower side.

Stocks at 52 wk High

Scrip	Cmp
Aurobindo Phar	119.95
Bajaj Auto	2652.85
DCB Bank	101.60
Eicher Motors	13992.9
HDFC Bank	930.10

Stocks at 52 wk Low

Scrip	Cmp
Cairn India	267.70
Dhunseri Petro	89.70
Parsvnath	18.95
Signet Ind	133.20
Tilaknagar Ind	33.35

FII Activity

Date	Figures in crore
10/11	355.30
11/11	458.04
12/11	459.47
13/11	690.61
14/11	645.9
Total	2609.32

DII Activity

Date	Figures in crore
10/11	-314.93
11/11	-516.98
12/11	-559.44
13/11	-738.24
14/11	-517.51
Total	-2649.1

Weekly Stock Idea

Scrip	B/S	Cmp	Tgt
LICHSGFIN	B	427	440
VOLTAS	B	272	290
CESC	B	762	790
PRAJIND	B	74	80
FOSECOIND	B	1021	1150

Buy on dips & Sell on rise with Stop-loss of 3%

Volume Breakout Stocks

Scrip	Cmp
Punj Lloyd	40.55
SAIL	86.30
Rashtriya Chemical F	68.60
Tata Power	88.80
Voltas	271.55

Week Ahead**MAJOR RESULTS/AGM MEETING THIS WEEK:**

18 NOV: GAMMNINFRA, DUNCANSLTD

20 NOV: CALSOFT

21 NOV: TECPRO

VISIT US AT: WWW.INDIRATRADE.COM

Disclaimer

This report is for private circulation within the Indira Group. This report is strictly confidential and for information of the selected recipient only and may not be altered in any way, transmitted to, copied or distributed, in part or in whole, to any other person or to the media or reproduced in any form. This report should not be construed as an offer or solicitation to buy or sell any securities or any interest in securities. It does not constitute a personal recommendation or take into account the particular investment objectives, financial situations, or any such factor. The information, opinions estimates and forecasts contained here have been obtained from, or are based upon, sources we believe to be reliable, but no representation of warranty, express or implied, is made by us to their accuracy or completeness. Opinions expressed are our current opinions as of the date appearing on this material only and are subject to change without notice.