

Top Stories This Week

- ≈ MCX & FT Ltd: MCX Board on Thursday paved a way for empowering MCX to transfer Financial Technologies (FT)'s stake in an escrow account and undertake the entire divestment process, said media reports.
- ≈ National Aluminium Company Limited (NALCO) has reiterated its commitment to supply hot metal to the proposed Angul Aluminium Park despite operating at reduced capacity due to problems in getting coal for its captive power plants.
- ≈ Japanese financial services giant Sumitomo Mitsui Trust Holdings Inc may buy a 10% stake in Anil Ambani-owned Reliance Capital by paying \$400 million (Rs2,400 crore at current exchange rates) for new shares, a person with direct knowledge of the talks said, signalling bullishness among Japanese companies that seem keen to invest in sectors ranging from pharma to financial services in Asia's third-largest economy.
- ≈ Ashok Leyland Ltd, India's second largest commercial vehicle maker, will be raising Rs635 crore through a qualified institutional placement (QIP) the company said in a filing to the BSE.
- ≈ Stating that some of the power plants of the companies like NTPC and Lanco are facing coal supply problem, the Power Ministry has sought the intervention of Coal and Power Minister Piyush Goyal for an urgent resolution.

Weekly Indices Change

Index	Close	P. Close	Chg. (%)
SENSEX	25099	25105	(0.02)
NIFTY	7508	7511	(0.04)
MIDCAP	9205	8961	2.72
SMLCAP	10022	9761	2.67
METAL	12939	12982	(0.33)
OIL&GAS	10990	11113	(1.11)
AUTO	15198	14878	2.15
TECK	5222	5163	1.14
BANSEX	17181	17196	(0.09)
IT	9270	9148	1.33
FMCG	6626	6841	(3.14)
HC	11259	10817	4.09
PSU	8413	8339	0.89
CD	8820	8488	3.91
POWER	2253	2199	2.46
CG	15853	15602	1.61
REALTY	2055	2006	2.44

Global Indices

DOW	16851	16947	(0.57)
NASDAQ	4397	4368	0.66
FTSE	6757	6825	(1.00)
NIKKEI	15095	15349	(1.65)
HANGSENG	23221	23194	0.12

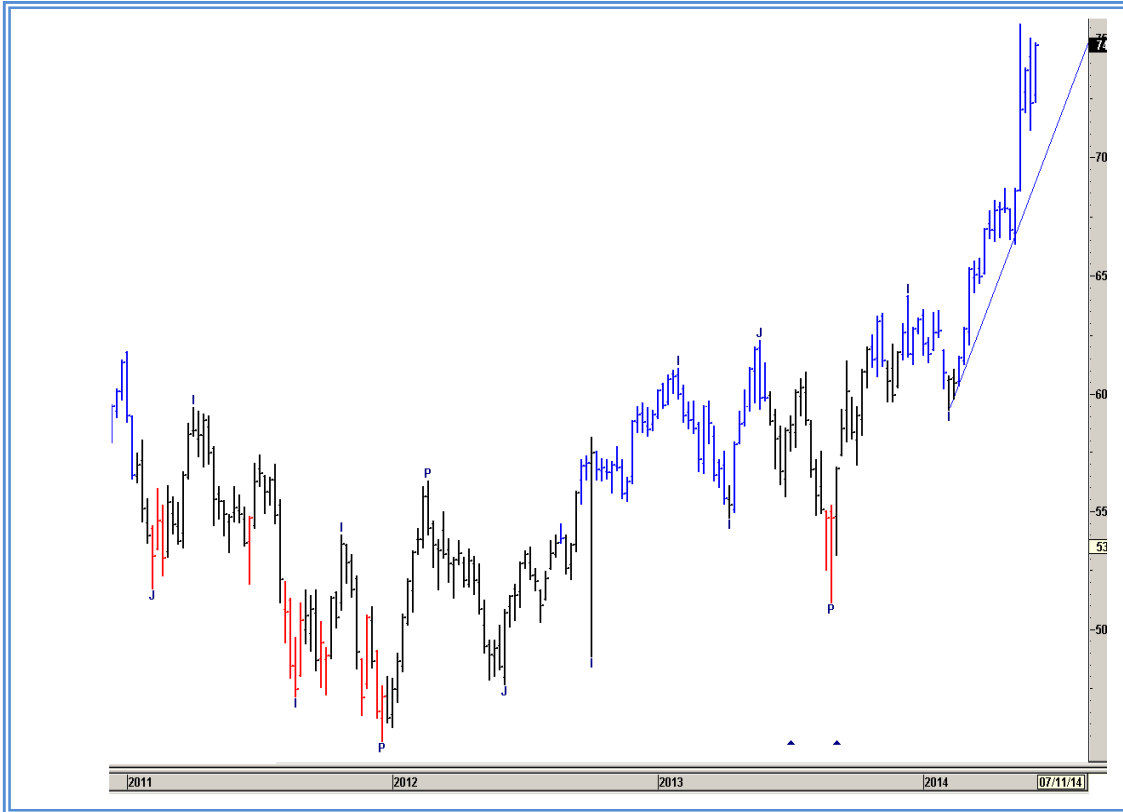
Top Gainers Weekly

Scrip	Price	% Chg
GSPL	89	13.23
BEL	2043	12.25
TITAN	352	11.89
FRL	135	10.67
IRB	224	9.97

Top Losers Weekly

Scrip	Price	% Chg
MCDOWELL	2500	10.90
KOTAKBANK	868	9.58
IDEA	130	8.93
ADANIEN	437	8.84
MPHASIS	412	7.79

Nifty Corner



Support & Resistance						
S3	S2	S1	Nifty	R1	R2	R3
7250	7350	7400	7508	7580	7650	7750
Moving Averages						
20DMA	50DMA	100DMA	200DMA			
7135	6890	6645	6385			

Market Commentary

Key benchmark indices were marginally lower in the week ended Friday, 27 June 2014. The barometer index, the S&P BSE Sensex edged lower in three out of five trading sessions in the week just gone by. The BSE Mid-Cap and the BSE Small-Cap indices outperformed the Sensex during the week. For the next week Nifty likely to trade in the range between 7650 - 7750 in the upper side and 7350 - 7250 in the lower side.

Stocks at 52 wk High

Scrip	Cmp
ABB	1101
ABBOTINDIA	2150
BAJHOLDING	1255
BERGERPAINTS	284
BHARATFORG	608

Stocks at 52 wk Low

Scrip	Cmp
--	--
--	--
--	--
--	--
--	--

FII Activity

Date	Figures in crore
23/06	-214.49
24/06	284.61
25/06	694.63
26/06	-601.89
27/06	182.55
NET	345.11

DII Activity

Date	Figures in crore
23/06	117.43
24/06	-216.17
25/06	-433.63
26/06	170.92
27/06	-172.40
NET	-533.85

Weekly Stock Idea

Scrip	B/S	Cmp	Tgt
TRENT	B	1256	1400
ARCHIES	B	21	27
MCLEODRUSS	B	317	340
SSWL	B	264	290
IPCALAB	B	864	910

Buy on dips & Sell on rise with Stop-loss of 3%

Volume Breakout Stocks

Scrip	Cmp
RSSOFTWARE	276
SOTL	724
SRF	590
GODREJCSP	813
THINKSOFT	426

Week Ahead**MAJOR BAORD MEETING THIS WEEK:**

30 JUNE: NHPC: BOARD MEETING FOR DIVIDEND.

30 JUNE: HAVELLS: BOARD MEETING FOR STOCK SPILIT.

VISIT US AT: WWW.INDIRATRADE.COM

Disclaimer

This report is for private circulation within the Indira Group. This report is strictly confidential and for information of the selected recipient only and may not be altered in any way, transmitted to, copied or distributed, in part or in whole, to any other person or to the media or reproduced in any form. This report should not be construed as an offer or solicitation to buy or sell any securities or any interest in securities. It does not constitute a personal recommendation or take into account the particular investment objectives, financial situations, or any such factor. The information, opinions estimates and forecasts contained here have been obtained from, or are based upon, sources we believe to be reliable, but no representation of warranty, express or implied, is made by us to their accuracy or completeness. Opinions expressed are our current opinions as of the date appearing on this material only and are subject to change without notice.