

Top Stories This Week

- ≈ Tata Motors-owned Jaguar Land Rover is planning to expand its China operations with a new engine-making plant - its first ever outside the UK - alongside its car assembly factory in Shanghai.
- ≈ Private equity firm Bain Capital is planning to sell a part of its stake in Hero MotoCorp via block deals on exchanges, sources said. Bain Capital is in discussion with potential investors and is likely to sell shares worth approx \$300 million, depending on the demand. The deal could hit the equity market in the next few days if price negotiation is complete.
- ≈ Country's third largest telco Idea Cellular said it has raised Rs 3,000 crore through qualified institutions placement (QIP) which witnessed strong interest from both foreign and domestic investors.
- ≈ After fighting a long and bitter patent battle in India over lung cancer drug Tarceva (Erlotinib), Swiss innovator firm Hoffman La Roche and Indian generic drugmaker Cipla have entered talks through mediation to settle the matter on "mutually agreeable terms".
- ≈ Oil & Gas stocks: Petrol prices may fall by less than a rupee this weekend as gasoline has eased in the international market. State oil marketing firms, however, are reluctant to pass on the benefit to consumers, arguing that they need a "pricing cushion" in view of the ongoing political crisis in Iraq.

Weekly Indices Change

Index	Close	P. Close	Chg. (%)
SENSEX	25228	25396	(0.66)
NIFTY	7542	7583	(0.54)
MIDCAP	8935	9098	(1.79)
SMLCAP	9674	9774	(1.02)
METAL	13075	13706	(4.60)
OIL&GAS	11361	11987	(5.22)
AUTO	15195	15184	0.07
TECK	5028	4853	3.61
BANKEK	17309	17788	(2.69)
IT	8895	8401	5.88
FMCG	6868	6931	(0.91)
HC	10760	10333	4.13
PSU	8701	8948	(2.76)
CD	8130	8207	(0.94)
POWER	2221	2327	(4.56)
CG	15857	16124	(1.66)
REALTY	1994	2128	(6.30)

Global Indices

DOW	16775	16924	(0.88)
NASDAQ	4310	4621	(6.73)
FTSE	6777	6858	(1.18)
NIKKEI	15097	15077	0.13
HANGSENG	23319	22951	1.60

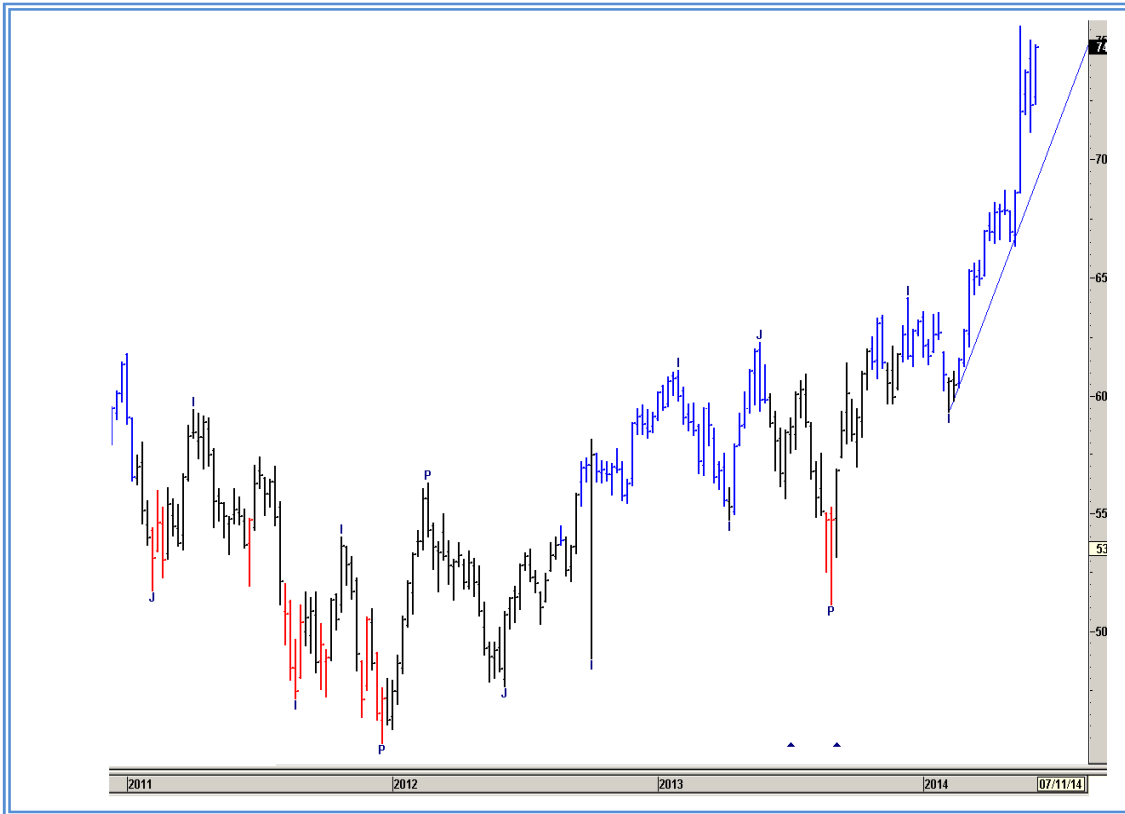
Top Gainers Weekly

Scrip	Price	% Chg
AMARRAJABAT	492	18.09
STAR	610	16.00
SUZLON	32	14.76
PRESTIGE	244	14.72
GODREJIND	337	12.41

Top Losers Weekly

Scrip	Price	% Chg
JPINFRATECH	31	13.77
JPOWER	21	11.13
M&MFIN	274	11.06
UCOBANK	99	10.75
IBREALEST	95	10.73

Nifty Corner



Support & Resistance						
S3	S2	S1	Nifty	R1	R2	R3
7200	7350	7400	7542	7650	7700	7750
Moving Averages						
20DMA	50DMA	100DMA	200DMA			
7135	6890	6645	6385			

Market Commentary

Key benchmark indices edged lower in the week ended Friday, 13 June 2014 as rise in crude oil prices amid escalating violence in Iraq triggered a sell-off on Friday, 13 June 2014. India imports majority of its crude oil requirements. The barometer index, the S&P BSE Sensex, and the 50-unit CNX Nifty, both, retreated after hitting a record high in intraday trade on Wednesday, 11 June 2014. The Sensex logged gains in three out of five trading sessions in the week just gone by. For the next week Nifty likely to trade in the range between 7700 - 7750 in the upper side and 7350 - 7200 in the lower side.

Stocks at 52 wk High

Scrip	Cmp
BAJAJ-AUTO	2170
AJANTPHARMA	1424
APOLLOTYRE	200
COLPAL	1519
ESCORTS	137

Stocks at 52 wk Low

Scrip	Cmp
--	--
--	--
--	--
--	--
--	--

FII Activity

Date	Figures in crore
09/06	536.68
10/06	682.26
11/06	-313.40
12/06	652.35
13/06	1099.92
NET	2657.81

DII Activity

Date	Figures in crore
09/06	-490.03
10/06	-1215.47
11/06	-407.76
12/06	-742.21
13/06	358.71
NET	-2496.76

Weekly Stock Idea

Scrip	B/S	Cmp	Tgt
ONGC	B	422	450
TECHM	B	2021	2070
DIVISLAB	B	1349	1390
COLPAL	B	1519	1570
HINDUNILVR	B	635	655

Buy on dips & Sell on rise with Stop-loss of 3%

Volume Breakout Stocks

Scrip	Cmp
HEROMOTOCO	2592
RELAXO	386
MAHLIFE	55
ESCORTS	137
GLOBUSSPR	85

Week Ahead**MAJOR RESULTS THIS WEEK:**

17 JUNE: KANORICHEM.

VISIT US AT: WWW.INDIRATRADE.COM

Disclaimer

This report is for private circulation within the Indira Group. This report is strictly confidential and for information of the selected recipient only and may not be altered in any way, transmitted to, copied or distributed, in part or in whole, to any other person or to the media or reproduced in any form. This report should not be construed as an offer or solicitation to buy or sell any securities or any interest in securities. It does not constitute a personal recommendation or take into account the particular investment objectives, financial situations, or any such factor. The information, opinions estimates and forecasts contained here have been obtained from, or are based upon, sources we believe to be reliable, but no representation of warranty, express or implied, is made by us to their accuracy or completeness. Opinions expressed are our current opinions as of the date appearing on this material only and are subject to change without notice.