

Top Stories This Week

- ≈ Financial Technologies (India): FTIL is learnt to have received non-binding bids for its stake in MCX from around a dozen domestic and international companies like BSE, Kotak, Warburg Pincus, Deutsche Borse, CME group and the like.
- ≈ MCX: Multi Commodity Exchange of India said it has decided, for the time being, not to go ahead with its controversial preferential allotment issue. The board, at a meeting, decided not to go ahead with the controversial preferential allotment of shares issue, for the time being, the Jignesh Shah-promoted exchange said in a statement here.
- ≈ Tata Steel Ltd: Tata Steel is selling a unit of its international operations, specifically the business in New Zealand and Pacific Island for NZ\$ 27.5 million or Rs 143 crore, to a Kiwi company, Steel and Tube, as part of its restructuring strategy.
- ≈ Piramal Enterprises: The company has inked a pact with Merisant India to distribute the company's artificial table-top sweetener brand, Equal, in the country. Piramal Enterprises has partnered with Merisant India for an exclusive sales and distribution partnership in the country for its artificial table-top sweetener Equal, Piramal Enterprises said in a statement.

Weekly Indices Change

Index	Close	P. Close	Chg. (%)
SENSEX	22628	22359	1.20
NIFTY	6776	6694	1.22
MIDCAP	7338	7197	1.96
SMLCAP	7523	7265	3.55
METAL	10352	10110	2.39
OIL&GAS	9647	9593	0.56
AUTO	13409	13278	0.99
TECK	4928	4947	(0.38)
BANKEK	14689	14362	2.28
IT	8835	8878	(0.48)
FMCG	6858	6865	(0.10)
HC	10532	10389	1.38
PSU	6508	6367	2.21
CD	6726	6722	0.06
POWER	1781	1723	3.37
CG	12205	11924	2.36
REALTY	1557	1526	2.03

Global Indices

DOW	16026	16412	(2.35)
NASDAQ	3999	4127	(3.10)
FTSE	6561	6695	(2.00)
NIKKEI	13960	15063	(7.32)
HANGSENG	23003	22510	2.19

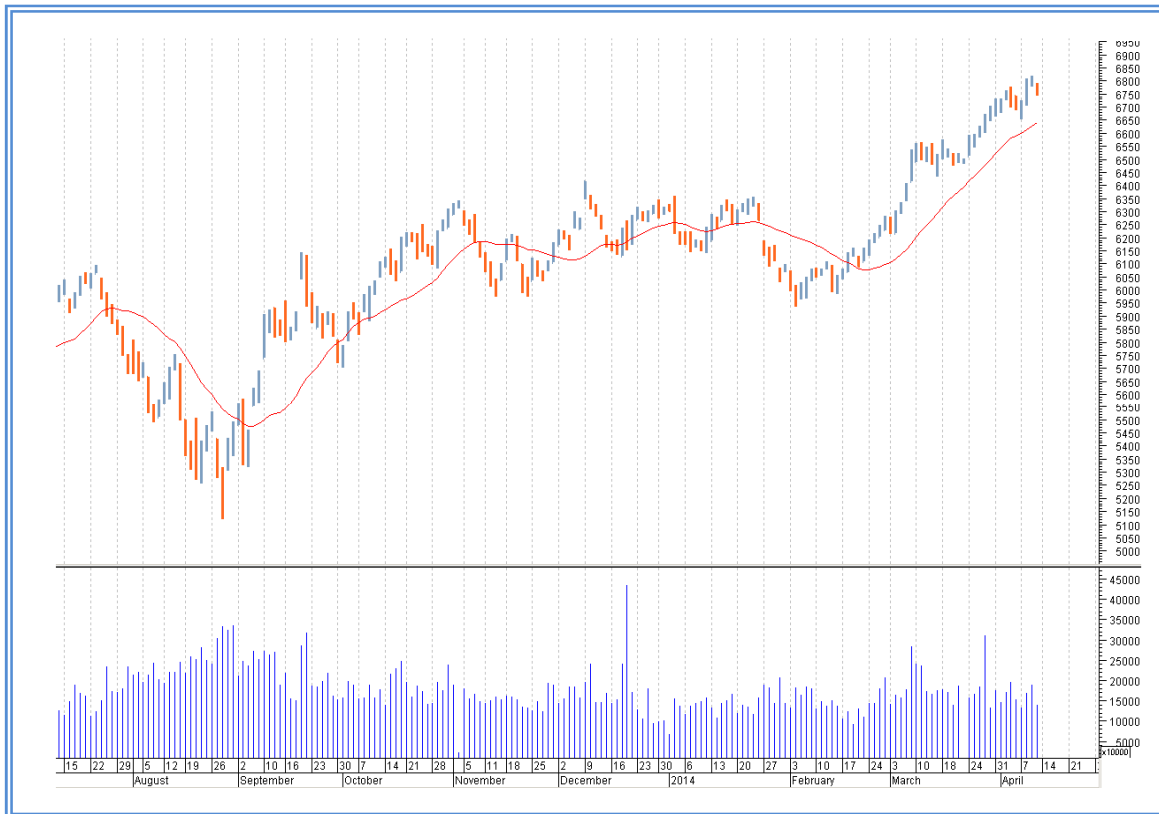
Top Gainers Weekly

Scrip	Price	% Chg
SUZLON	15	31.07
RANBAXY	468	26.22
UNITECH	17	24.91
JETAIRWAYS	303	24.15
ESSAROIL	63	22.75

Top Losers Weekly

Scrip	Price	% Chg
L&TFH	67	10.76
DISHTV	49	7.04
BATAINDIA	1071	5.28
BOSCHLTD	10200	5.15
JINDALSTEEL	280	4.62

Nifty Corner



Support & Resistance						
S3	S2	S1	Nifty	R1	R2	R3
6500	6600	6650	6776	6850	6900	6950
Moving Averages						
20DMA		50DMA		100DMA		200DMA
6640		6375		6295		6080

Market Commentary

Market edged higher during the week after the main opposition party "the Bharatiya Janata Party" in its Lok Sabha polls manifesto released early this week promised more business-friendly policies if the party comes to power after elections. Strong buying by foreign institutional investors (FIIs) also propelled shares higher. The Sensex garnered 269 points or 1.21% to settle at 22,628. The 50-unit CNX Nifty garnered 82 points or 1.22% to settle at 6,776. For the next week Nifty likely to trade in the range between 6900 - 6950 in the upper side and 6600 - 6500 in the lower side.

Stocks at 52 wk High

Scrip	Cmp
AMBUJACEM	217
ARVIND	184
BAJAJHLDNG	1042
BEML	430
CESC	524

Stocks at 52 wk Low

Scrip	Cmp
--	--
--	--
--	--
--	--
--	--

FII Activity

Date	Figures in crore
07/04	703.71
08/04	N.A.
09/04	1043.86
10/04	342.75
11/04	-362.29
NET	1728.03

DII Activity

Date	Figures in crore
07/04	-1081.36
08/04	N.A.
09/04	-463.78
10/04	13.45
11/04	364.92
NET	1166.77

Weekly Stock Idea

Scrip	B/S	Cmp	Tgt
NTPC	B	124	135
ADVANTA	B	148	170
COALINDIA	B	293	310
HEXAWARE	B	170	185
TAJGVK	B	72	82

Buy on dips & Sell on rise with Stop-loss of 3%

Volume Breakout Stocks

Scrip	Cmp
NATIONALUM	40
PFIZER	1244
KRBL	57
NFL	26
MUKANDLTD	32

Week Ahead**MAJOR RESULTS THIS WEEK:**

15 APRIL: DCBBANK, INFY.

16 APRIL: RIIL, TCS, MINDTREE, INDUSINDBANK.

17 APRIL: WIPRO, HCLTECH, GLAXO, CRISIL.

18 APRIL: RELIANCE.

VISIT US AT: WWW.INDIRATRADE.COM

Disclaimer

This report is for private circulation within the Indira Group. This report is strictly confidential and for information of the selected recipient only and may not be altered in any way, transmitted to, copied or distributed, in part or in whole, to any other person or to the media or reproduced in any form. This report should not be construed as an offer or solicitation to buy or sell any securities or any interest in securities. It does not constitute a personal recommendation or take into account the particular investment objectives, financial situations, or any such factor. The information, opinions estimates and forecasts contained here have been obtained from, or are based upon, sources we believe to be reliable, but no representation of warranty, express or implied, is made by us to their accuracy or completeness. Opinions expressed are our current opinions as of the date appearing on this material only and are subject to change without notice.