

## Top Stories This Week

- ≈ Titan Company Ltd: Watches and jewellery retailer Titan Co. Ltd. said it entered a joint venture with luxury goods maker Montblanc International GmbH for single brand retail trade in India.
- ≈ The gross domestic product (GDP) for Q3 FY14 came in almost flat at 4.7 percent versus a Market Poll of 4.8 percent. The growth is higher by 0.2 percent on a year-on-year basis, but has shown a degrowth quarter-on quarter (4.7 percent versus 4.8). The Central Statistics Office (CSO) had estimated a growth of 4.9 percent.
- ≈ Software company Tech Mahindra and liquor maker United Spirits, which is partially owned by Diageo PLC, would be included in India's NSE index from March 28, the National Stock Exchange (NSE) said. The two stocks will replace Jaiprakash Associates and Ranbaxy Laboratories NSE said in a circular.
- ≈ Tata Motors Ltd: India's largest automobile company is exploring the possibility of setting up a manufacturing plant for Jaguar and Land Rover in Saudi Arabia, the Gulf kingdom's industry minister.

## Weekly Indices Change

Index	Close	P. Close	Chg. (%)
SENSEX	21120	20700	2.03
NIFTY	6276	6155	1.97
MIDCAP	6500	6422	1.21
SMLCAP	6445	6393	0.81
METAL	8660	8969	(3.45)
OIL&GAS	8425	8351	0.89
AUTO	12598	12167	3.54
TECK	5260	5156	2.02
BANKEX	12284	12049	1.95
IT	9792	9568	2.34
FMCG	6483	6392	1.42
HC	10839	10369	4.53
PSU	5514	5503	0.20
CD	5951	5789	2.80
POWER	1528	1547	(1.23)
CG	10375	9852	5.31
REALTY	1203	1208	(0.41)

## Global Indices

DOW	16321	16103	1.35
NASDAQ	4308	4263	1.06
FTSE	6809	6838	(0.42)
NIKKEI	14841	14865	(0.16)
HANGSENG	22836	22568	1.19

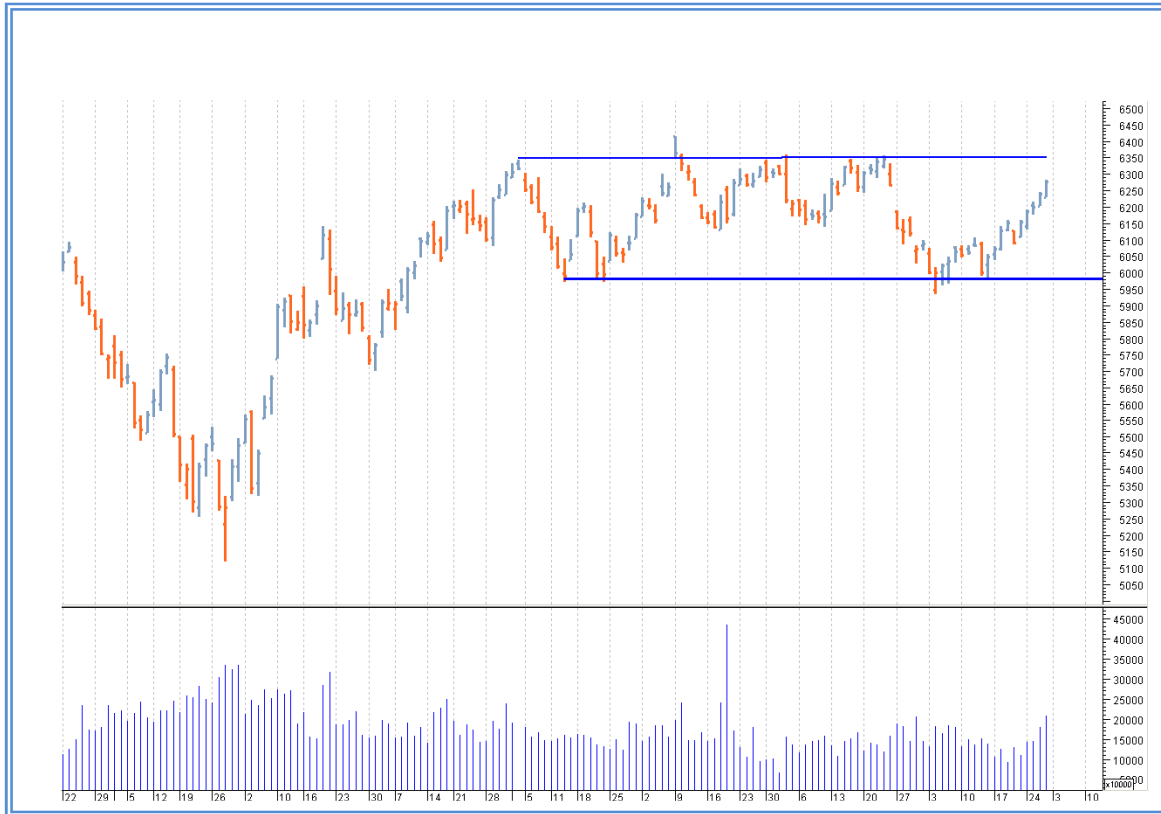
## Top Gainers Weekly

Scrip	Price	% Chg
JPOWER	16.5	15.39
INDHOTEL	69	15.17
SUNTV	371	13.57
APOLLOTYRE	132	12.60
BHEL	167	11.69

## Top Losers Weekly

Scrip	Price	% Chg
NTPC	112	15.88
TATASTEEL	344	9.22
UNITECH	11	9.12
NMDC	127	7.65
SAIL	56	7.46

## Nifty Corner



<b>Support &amp; Resistance</b>						
<b>S3</b>	<b>S2</b>	<b>S1</b>	<b>Nifty</b>	<b>R1</b>	<b>R2</b>	<b>R3</b>
6000	6050	6150	6276	6350	6450	6500
<b>Moving Averages</b>						
<b>20DMA</b>		<b>50DMA</b>		<b>100DMA</b>		<b>200DMA</b>
6100		6185		6170		5985

## Market Commentary

Key benchmark indices edged higher on resumption of buying of Indian stocks by foreign institutional investors (FIIs). The barometer index, the S&P BSE Sensex, attained 5-week closing high. The 50-unit CNX Nifty attained its highest closing level in more five weeks. The Sensex moved past the psychological 21,000 mark on the last trading session of the week and the month on Friday, 28 February 2014. Key benchmark indices gained in all the four trading sessions in of a truncated week. For the next week Nifty likely to trade in the range between 6350 - 6500 in the upper side and 6050 - 6000 in the lower side.

Stocks at 52 wk High

Scrip	Cmp
AARTIIND	108
AJANTPHARMA	1040
ARVIND	156
BHARATFORG	382
CESC	485

Stocks at 52 wk Low

Scrip	Cmp
NTPC	112
PURVA	53
UNITECH	11
RUCHINFRA	12
ITDCEM	132

FII Activity

Date	Figures in crore
24/02	266.87
25/02	423.41
26/02	511.15
27/02	N.A.
28/02	591.82
NET	1793.25

DII Activity

Date	Figures in crore
24/02	-248.49
25/02	-289.12
26/02	-251.91
27/02	N.A.
28/02	12.02
NET	-777.5

Weekly Stock Idea

Scrip	B/S	Cmp	Tgt
WOCKPHARMA	B	442	490
APTECH	B	71	78
CMC	B	1498	1580
ZENSARTECH	B	395	430
ORIENTBANK	B	167	178

Buy on dips & Sell on rise with Stop-loss of 3%

Volume Breakout Stocks

Scrip	Cmp
ASTRAZEN	927
BAJAJCORP	206
FACT	21
HTMEDIA	77
MOIL	233

Week Ahead**MAJOR BOARD MEETING THIS WEEK:**

**03 MARCH: SBIN:** BOARD MEETING FOR DIVIDEND.

**VISIT US AT: [WWW.INDIRATRADE.COM](http://WWW.INDIRATRADE.COM)**

**Disclaimer**

This report is for private circulation within the Indira Group. This report is strictly confidential and for information of the selected recipient only and may not be altered in any way, transmitted to, copied or distributed, in part or in whole, to any other person or to the media or reproduced in any form. This report should not be construed as an offer or solicitation to buy or sell any securities or any interest in securities. It does not constitute a personal recommendation or take into account the particular investment objectives, financial situations, or any such factor. The information, opinions estimates and forecasts contained here have been obtained from, or are based upon, sources we believe to be reliable, but no representation of warranty, express or implied, is made by us to their accuracy or completeness. Opinions expressed are our current opinions as of the date appearing on this material only and are subject to change without notice.