

Top Stories This Week

- ≈ October GSM Data -Total GSM user addition at 43.4 lakh versus 44.1 lakh (MoM) - Bharti Airtel added 14.9 lakh users versus 11.65 lakh users (MoM) - Idea Cellular added 11.5 lakh users versus 12.1 lakh users (MoM) - MTNL lost 1.64 lakh users versus 2.31 lakh users loss (MoM) -Vodafone India added 11.5 lakh users versus 12.1 lakh users (MoM) -Uninor lost 21,935 users versus addition of 1.02 lakh users (MoM).
- ≈ NTPC to start mining from Jharkhand Coal Block.
- ≈ Reliance Communications would raise USD 1 billion by securitising its Rs 12000 crore deal with Mukesh Ambani's Reliance Jio, in the next six months.
- ≈ REC Q2 -Net Profit At Rs 1,110.7 Crore Versus Rs 954 Crore (YoY) - NII At Rs 1,743 Crore Versus Rs 1,280 Crore (YoY) -Forex Loss At Rs 95.4 Crore Versus Loss Of Rs 14 Crore (YoY).
- ≈ Reliance Power Q2 -Consolidated net profit at Rs 252 crore - Consolidated net sales at Rs 1,320.6 crore, Consolidated EBITDA at Rs 431 crore - Consolidated EBITDA margin at 32.6 percent Reliance Power says -Second unit of 660 mw Sasan power plant to start this month - 1,200 mw Rosa plant operated at availability of over 90 percent -660 mw Butibori project in Maharashtra signed with Reliance Infrastructure for 25 years.

Weekly Indices Change

Index	Close	P. Close	Chg. (%)
SENSEX	20399	20666	(1.29)
NIFTY	6056	6140	(1.37)
MIDCAP	6141	6210	(1.11)
SMLCAP	5956	6013	(0.95)
METAL	9182	9318	(1.46)
OIL&GAS	8398	8612	(2.48)
AUTO	12079	12029	0.42
TECK	4777	4818	(0.85)
BANKEK	12326	12458	(1.06)
IT	8462	8561	(1.16)
FMCG	6451	6539	(1.35)
HC	9646	9667	(0.22)
PSU	5627	5767	(2.43)
CD	5752	5825	(1.25)
POWER	1582	1613	(1.92)
CG	8883	9128	(2.68)
REALTY	1304	1343	(2.90)

Global Indices

DOW	15961	15761	1.27
NASDAQ	3985	3919	1.68
FTSE	6693	6708	(0.22)
NIKKEI	14876	14086	5.61
HANGSENG	22649	22744	(0.42)

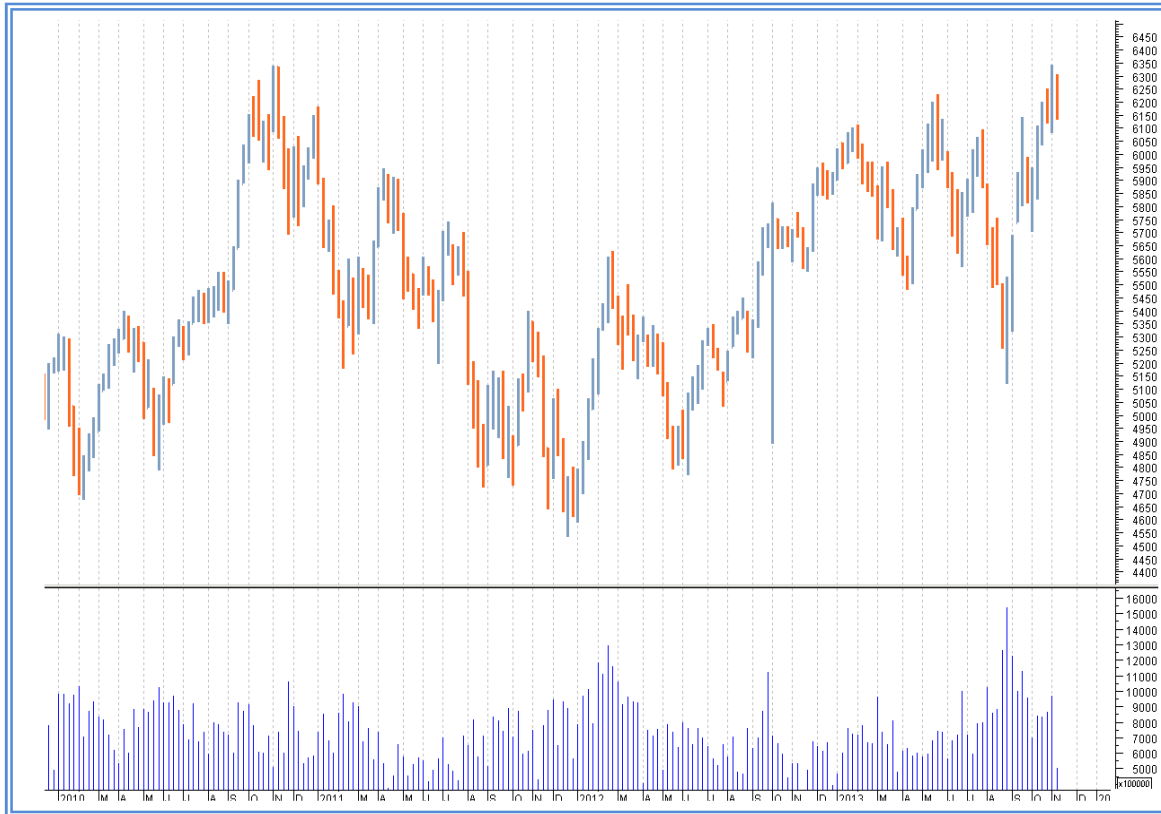
Top Gainers Weekly

Scrip	Price	% Chg
ADANIENT	244	17.44
AUROPHARAM	282	17.33
DIVISLAB	1148	16.49
NATIONALUM	40	11.74
TATASTEEL	375	10.81

Top Losers Weekly

Scrip	Price	% Chg
ASHOKLEY	15	17.34
CENTRALBANK	53	17.23
CORPBANK	264	17.18
UBL	761	14.71
INDIANB	95	14.65

Nifty Corner



Support & Resistance						
S3	S2	S1	Nifty	R1	R2	R3
5800	5950	6000	6056	6150	6200	6350
Moving Averages						
20DMA	50DMA	100DMA	200DMA			
6100	5850	5810	5855			

Market Commentary

Both the indices Nifty & Sensex closed with loss of 1.3%, During the week selling seen across the sectors and closed with loss of 1%-2%, only Auto sector manage to close in green. For the next week Nifty likely to trade in the range between 6200 - 6350 in the upper side and 5950 - 5800 in the lower side.

Stocks at 52 wk High

Scrip	Cmp
AJANTPHARM	976
APLLTD	215
ARVIND	120
EVEREADY	27
TVTODAY	117

Stocks at 52 wk Low

Scrip	Cmp
DEN	134
SURANAIND	71
GEOJIT	17
JBFIND	79
GEECEE	28

FII Activity

Date	Figures in crore
11/11	333.50
12/11	347.58
13/11	299.70
14/11	970.03
15/11	N.A.
NET	1950.81

DII Activity

Date	Figures in crore
11/11	-782.53
12/11	-870.40
13/11	-253.11
14/11	-410.81
15/11	N.A.
NET	-2316.84

Weekly Stock Idea

Scrip	B/S	Cmp	Tgt
ADANIPOWER	B	153	165
ADANIPOWER	B	35	38
COX&KING	B	99	110
TORNTPOWER	B	105	120
AUROPHARM	B	282	295

Buy on dips & Sell on rise with Stop-loss of 3%

Volume Breakout Stocks

Scrip	Cmp
COX&KING	99
UCALFUEL	58
NDTV	83
KEC	40
SKSMIRCO	158

Week Ahead**MAJOR RESULTS THIS WEEK:**

18 NOV: HINDMOTORS.

21 NOV: MAWANASUG, NELCO.

22 NOV: SIEMENS, ELECTHERM.

VISIT US AT: WWW.INDIRATRADE.COM

Disclaimer

This report is for private circulation within the Indira Group. This report is strictly confidential and for information of the selected recipient only and may not be altered in any way, transmitted to, copied or distributed, in part or in whole, to any other person or to the media or reproduced in any form. This report should not be construed as an offer or solicitation to buy or sell any securities or any interest in securities. It does not constitute a personal recommendation or take into account the particular investment objectives, financial situations, or any such factor. The information, opinions estimates and forecasts contained here have been obtained from, or are based upon, sources we believe to be reliable, but no representation of warranty, express or implied, is made by us to their accuracy or completeness. Opinions expressed are our current opinions as of the date appearing on this material only and are subject to change without notice.