

## Top Stories This Week

- ≈ Axis Bank says -Seeing turnaround in Indian economy -Q2 loan growth at 16.9 percent; CASA growth at 14.5 percent, - Continue to be a well capitalised bank -Restructured assets at Rs 1,031 crore versus Rs 690 crore (QoQ) -Slippages at Rs 618 crore versus Rs 680 crore (QoQ) -Cost-to-income ratio stands at 41.53 percent.
- ≈ Oil marketing companies (OMCs) hold back petrol price cut of Re 1 per litre ahead of elections: Sources -OMCs say cushion needed as cut not possible around elections -OMCs had cushion of about Re 1 per litre on petrol price on October 15 -OMCs have lost in excess of Rs 400 crore on petrol this fiscal -No petrol price cut to also make up for FY13, FY14 losses.
- ≈ UK Regulator -Asks pharmacies to return 5 drugs made by Wockhardt -Drugs recall post ban on Wockhardt Aurangabad unit - Wockhardt can still sell 10 products from Aurangabad unit - No proof of patient safety risk from Wockhardt drugs Wockhardt says - Impact of recalled drugs in UK at around 1 million pound -Got UK regulator nod to manufacturing some products at Chikalhana unit.
- ≈ Dumping Financial Technologies could cost MCX-SX Rs 6200 crore in compensation: ET (Auditors of draft panel estimate)

## Weekly Indices Change

Index	Close	P. Close	Chg. (%)
SENSEX	20882	20528	1.72
NIFTY	6189	6096	1.53
MIDCAP	5895	5870	0.43
SMLCAP	5737	5718	0.33
METAL	9017	8718	3.43
OIL&GAS	8815	8525	3.40
AUTO	11930	11959	(0.24)
TECK	4835	4790	0.94
BANKEK	12254	12087	1.38
IT	8546	8514	0.38
FMCG	6994	6816	2.61
HC	9747	9783	(0.37)
PSU	5592	5553	0.70
CD	5920	5875	0.77
POWER	1569	1560	0.58
CG	8428	8472	(0.52)
REALTY	1353	1354	(0.07)

## Global Indices

DOW	15399	15237	1.06
NASDAQ	3914	3791	3.24
FTSE	6622	6487	2.08
NIKKEI	14561	14404	1.09
HANGSENG	23340	23218	0.53

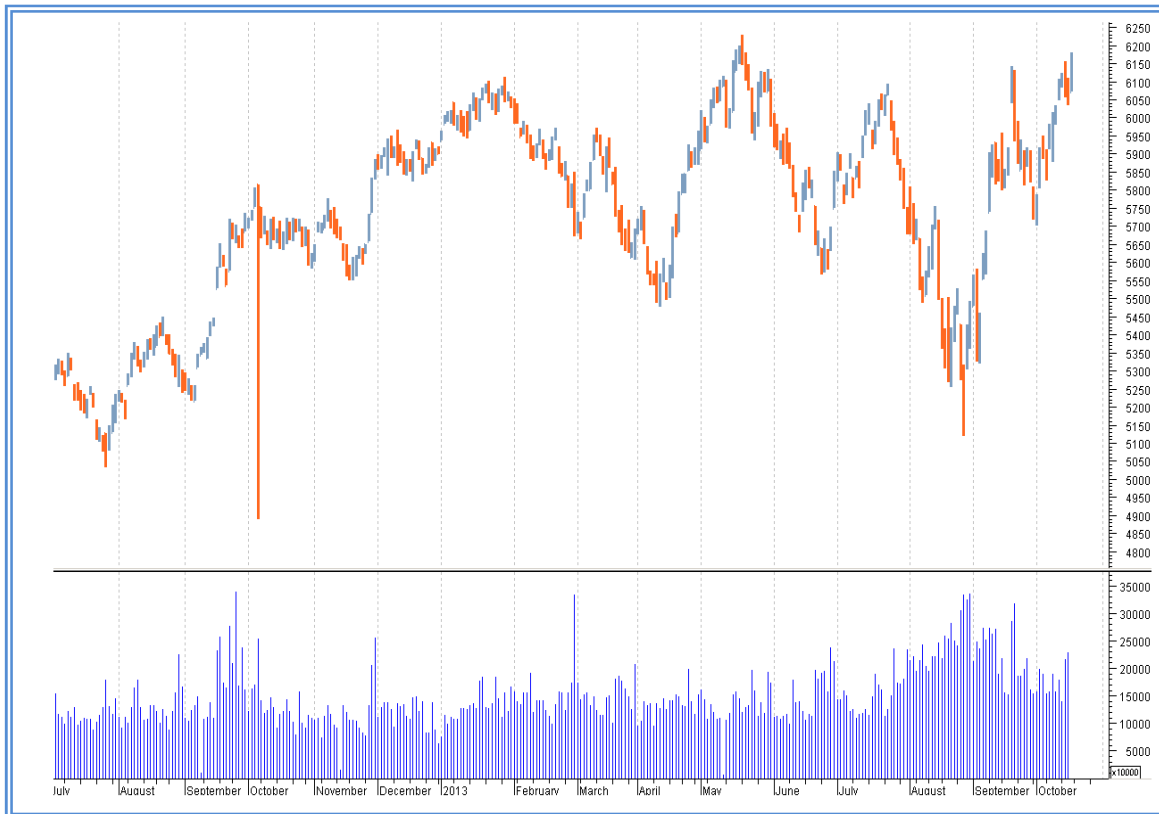
## Top Gainers Weekly

Scrip	Price	% Chg
MCX	509	26.16
JPASSOCIATE	47	23.58
JPOWER	19	16.72
KTKBANK	106	16.49
GMDC	105	15.08

## Top Losers Weekly

Scrip	Price	% Chg
TTKPRESTIGE	3295	6.82
PFC	129	5.61
FINTECH	160	5.42
TATAPOWER	80	5.23
IOC	200	5.19

## Nifty Corner



<b>Support &amp; Resistance</b>						
<b>S3</b>	<b>S2</b>	<b>S1</b>	<b>Nifty</b>	<b>R1</b>	<b>R2</b>	<b>R3</b>
5800	5900	6050	6189	6250	6350	6500
<b>Moving Averages</b>						
<b>20DMA</b>		<b>50DMA</b>		<b>100DMA</b>		<b>200DMA</b>
5480		5705		5810		5835

## Market Commentary

Both Nifty and Sensex closed with the gain of more than 1.5% during the week and Indian market closed at high of 3 yrs. Metals, oil&gas and FMCG were the gainers during the week while Healthcare and Auto seems slightly selling during the week. For the next week Nifty likely to trade in the range between 6250 - 6500 in the upper side and 6050 - 5800 in the lower side.

Stocks at 52 wk High

Scrip	Cmp
ACCELYA	688
THOMASCOOK	70
RALLIS	161
MPSLTD	164
KRBL	30

Stocks at 52 wk Low

Scrip	Cmp
PARSVNATH	26
NOIDATOLL	21
PLETHICO	49
--	--
--	--

FII Activity

Date	Figures in crore
14/10	730.29
15/10	1136.23
16/10	N.A.
17/10	1109.93
18/10	1752.98
NET	4729.43

DII Activity

Date	Figures in crore
14/10	-641.20
15/10	-1035.34
16/10	N.A.
17/10	-1149.22
18/10	-562.23
NET	-3387.99

Weekly Stock Idea

Scrip	B/S	Cmp	Tgt
CENTURYTEXT	B	267	280
WIPRO	B	506	520
DLF	B	157	164
RIIL	B	316	345
SBIN	B	1664	1730

Buy on dips & Sell on rise with Stop-loss of 3%

Volume Breakout Stocks

Scrip	Cmp
ESAB	446
SUBEX	7
HITACHIOM	122
MOIL	230
GRUH	215

Week Ahead**MAJOR RESULTS THIS WEEK:**

**21 OCT:** ASIANPAINTS, KTKBANK, HDFC, ZEEL, TATACOFFEE.

**22 OCT:** YESBANK, WIPRO, CAIRN, IBREALEST.

**23 OCT:** POWERGRID, L&TFH, HEROMOTOCO. HINDZINC, DISHTV, EXIDEIND.

**24 OCT:** UNIPHOS, NMDC, MRF, PTC, IPCALAB, KOTAKBANK, BIOCON.

**25 OCT:** TVSMOTORS, IDBI, ICICIBANK, ADANIPOWER, ADANIPOWER, ADANIPOWER, COLPAL.

**VISIT US AT: [WWW.INDIRATRADE.COM](http://WWW.INDIRATRADE.COM)**

**Disclaimer**

This report is for private circulation within the Indira Group. This report is strictly confidential and for information of the selected recipient only and may not be altered in any way, transmitted to, copied or distributed, in part or in whole, to any other person or to the media or reproduced in any form. This report should not be construed as an offer or solicitation to buy or sell any securities or any interest in securities. It does not constitute a personal recommendation or take into account the particular investment objectives, financial situations, or any such factor. The information, opinions estimates and forecasts contained here have been obtained from, or are based upon, sources we believe to be reliable, but no representation of warranty, express or implied, is made by us to their accuracy or completeness. Opinions expressed are our current opinions as of the date appearing on this material only and are subject to change without notice.