

Top Stories This Week

- ≈ Bajaj Auto September sales - Better than expected, after seven consecutive months of Y-o-Y drop, sales have finally seen a growth Y-o-Y -Domestic motorcycle sales see largely flattish growth versus expectation of 10 percent decline while export boost continues Y-o-Y -Total sales up 2 percent to 3.67 lakh versus 3.60 lakh units - Motorcycles up 3 percent at 3.23 lakh versus 3.15 lakh -3-wheeler down 2 percent at 43936 versus 44838 units -Export sales up 10 percent at 1.46 lakh versus 1.33 lakh units.
- ≈ Ashok Leyland -Disappointing sales across all segments -CV sales have been hit very badly, but now even the fast selling light commercial vehicle Dost has now succumbed to the -slowdown and seen lower sales Y-o-Y for the last two months Y-o-Y.
- ≈ TRAI releases consultation paper on issue/extension of DTH license - TRAI Consultation Paper: Key issues in paper include entry fee, bank guarantee & period of licence -TRAI seeks comments/view of the stakeholders. -Stakeholders requested to offer comments latest by October 15, 2013.
- ≈ SEBI clears Jet Airways -Etihad deal; no open offer required.

Weekly Indices Change

Index	Close	P. Close	Chg. (%)
SENSEX	19915	19727	0.95
NIFTY	5907	5833	1.27
MIDCAP	5731	5621	1.96
SMLCAP	5565	5496	1.26
METAL	8729	8580	1.74
OIL&GAS	8403	8362	0.49
AUTO	11466	11161	2.73
TECK	4549	4458	2.04
BANKEKX	11611	11284	2.90
IT	8021	7834	2.39
FMCG	6798	6925	(1.83)
HC	9572	9472	1.06
PSU	5539	5562	(0.41)
CD	5912	5828	1.44
POWER	1529	1546	(1.10)
CG	8005	7938	0.84
REALTY	1245	1195	4.18

Global Indices

Index	Close	P. Close	Chg. (%)
DOW	15072	15258	(1.22)
NASDAQ	3807	3781	0.69
FTSE	6453	6512	(0.91)
NIKKEI	14024	14760	(4.99)
HANGSENG	23138	23207	(0.30)

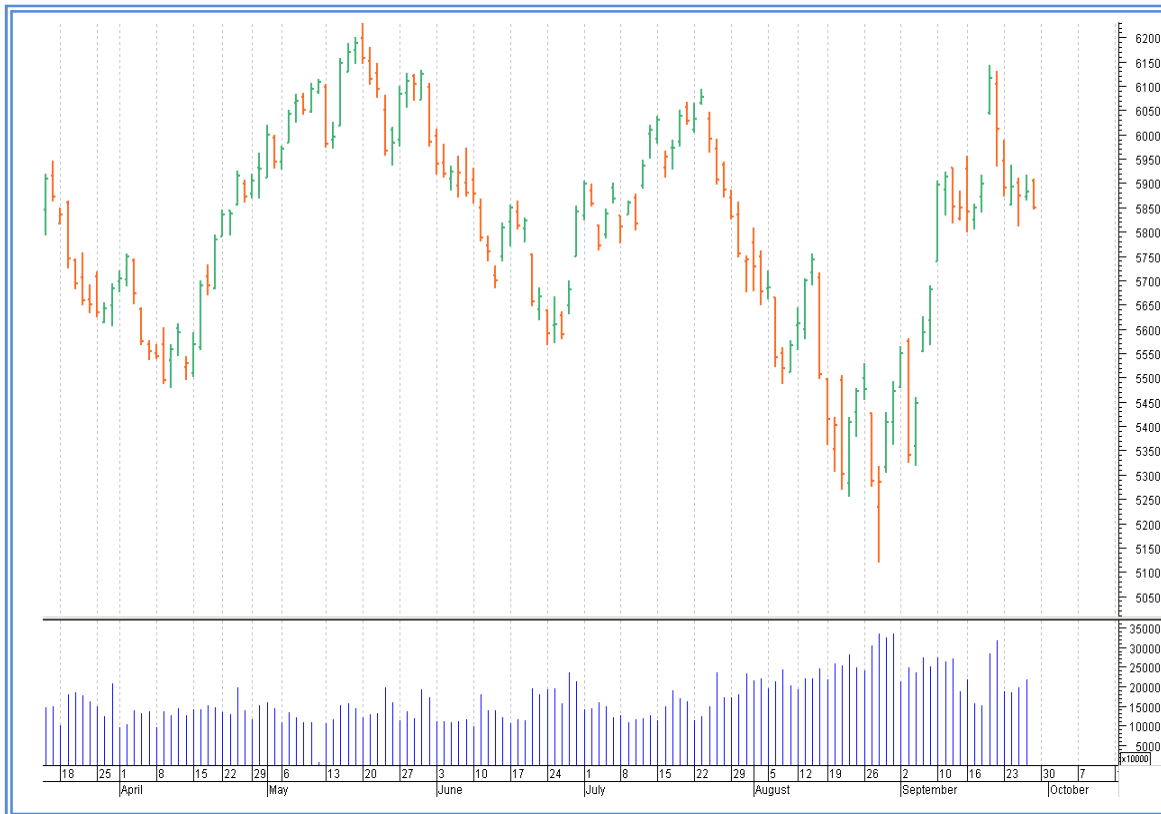
Top Gainers Weekly

Scrip	Price	% Chg
TATACOMM	215	16.68
INGVYASYA	573	15.49
MRF	14389	12.00
SOBHA	318	11.94
GLENMARK	556	11.22

Top Losers Weekly

Scrip	Price	% Chg
WOCKPHARMA	449	23.27
GITANJALI	53	11.61
GODREJIND	265	8.36
MCX	403	7.12
BERGERPAINTS	216	6.87

Nifty Corner



Support & Resistance						
S3	S2	S1	Nifty	R1	R2	R3
5600	5750	5800	5907	5970	6050	6200
Moving Averages						
20DMA		50DMA		100DMA		200DMA
5480		5705		5810		5835

Market Commentary

During the week both Nifty & Sensex closed with the gains of more than 1%. Realty index closed with the gains of 4% followed by Bankex with the gain of 3% and all the other indices closed with gain of 1-2% except Power, FMGC & PSU closed with marginal losses. For the next week Nifty likely to trade in the range between 6050 - 6200 in the upper side and 5750 - 5600 in the lower side.

Stocks at 52 wk High

Scrip	Cmp
JUSTDIAL	1029
CEATLTD	136
CINEMAXINDIA	273
DENSO	139
PVR	547

Stocks at 52 wk Low

Scrip	Cmp
ERAINFRA	94
SABTN	75
--	--
--	--
--	--

FII Activity

Date	Figures in crore
30/09	-519.64
01/10	-106.96
02/10	N.A.
03/10	997.21
04/10	541.36
NET	911.97

DII Activity

Date	Figures in crore
30/09	89.76
01/10	125.35
02/10	N.A.
03/10	-493.00
04/10	-302.07
NET	-579.96

Weekly Stock Idea

Scrip	B/S	Cmp	Tgt
TATACOM	B	215	224
UNIPHOS	B	153	164
BFUTILITIE	B	152	175
INOXLEISURE	B	86	95
ADANIANT	B	148	165

Buy on dips & Sell on rise with Stop-loss of 3%

Volume Breakout Stocks

Scrip	Cmp
INOXLEISURE	86
BFUTILITIE	152
ADANIAPORTS	143
SOBHA	318
BEML	176

Week Ahead**MAJOR RESULTS THIS WEEK:**

09 OCT: GOACARBON, PFS.

11 OCT: INFY, GRUH.

VISIT US AT: WWW.INDIRATRADE.COM

Disclaimer

This report is for private circulation within the Indira Group. This report is strictly confidential and for information of the selected recipient only and may not be altered in any way, transmitted to, copied or distributed, in part or in whole, to any other person or to the media or reproduced in any form. This report should not be construed as an offer or solicitation to buy or sell any securities or any interest in securities. It does not constitute a personal recommendation or take into account the particular investment objectives, financial situations, or any such factor. The information, opinions estimates and forecasts contained here have been obtained from, or are based upon, sources we believe to be reliable, but no representation of warranty, express or implied, is made by us to their accuracy or completeness. Opinions expressed are our current opinions as of the date appearing on this material only and are subject to change without notice.