

## Top Stories This Week

- ≈ Tata Consultancy Services on Thursday reported a 6% quarter-on-quarter rise in consolidated Q1 FY14 net profit at Rs. 3,831cr. India's largest software exporter by revenue posted consolidated sales of Rs. 17,987cr, a jump of 9.5% QoQ. The strong numbers came on the back of increased deal wins and foreign exchange gains. The results were based on international accounting standards.
- ≈ Axis Bank Ltd has posted results Its net profit stood at Rs14.09bn. The bank's net NPA stands at 0.35%, while NII was at 28.65bn.
- ≈ RCom offers 3G plan at 2G Prices, with this move aims at getting 40% share of fast-growing smartphones market.
- ≈ Reserve Bank of India (RBI): Sells only Rs 2,535 crore of bonds in open market operation, Rejects all bids for 8.07 percent, 2017 and 8.15 percent, 2022 bond, Sells Rs 777 crore of 8.33 percent, 2026 bond, Sells Rs 1755 crore of 8.97 percent, 2030 bond, (Street fears CRR hike as bond auction flops).
- ≈ Reliance Industries has posted a 19 percent year-on-year rise in June quarter profit to Rs 5352 crore, boosted by stronger margins in its main oil refining business and higher other income.

## Weekly Indices Change

Index	Close	P. Close	Chg. (%)
SENSEX	20149	19958	0.96
NIFTY	6029	6009	0.33
MIDCAP	5993	6048	(0.91)
SMLCAP	5706	5737	(0.54)
METAL	7478	7747	(3.47)
OIL&GAS	9161	8799	4.11
AUTO	10686	10571	1.09
TECK	4127	3973	3.88
BANKEK	12543	13376	(6.23)
IT	7097	6825	3.99
FMCG	7441	6947	7.11
HC	9346	9385	(0.42)
PSU	5944	5966	(0.37)
CD	6352	6297	0.87
POWER	1643	1664	(1.26)
CG	9320	9528	(2.18)
REALTY	1456	1518	(4.08)

## Global Indices

DOW	15543	15464	0.51
NASDAQ	3587	3600	(0.36)
FTSE	6630	6544	1.31
NIKKEI	14589	14506	0.57
HANGSENG	21362	21277	0.40

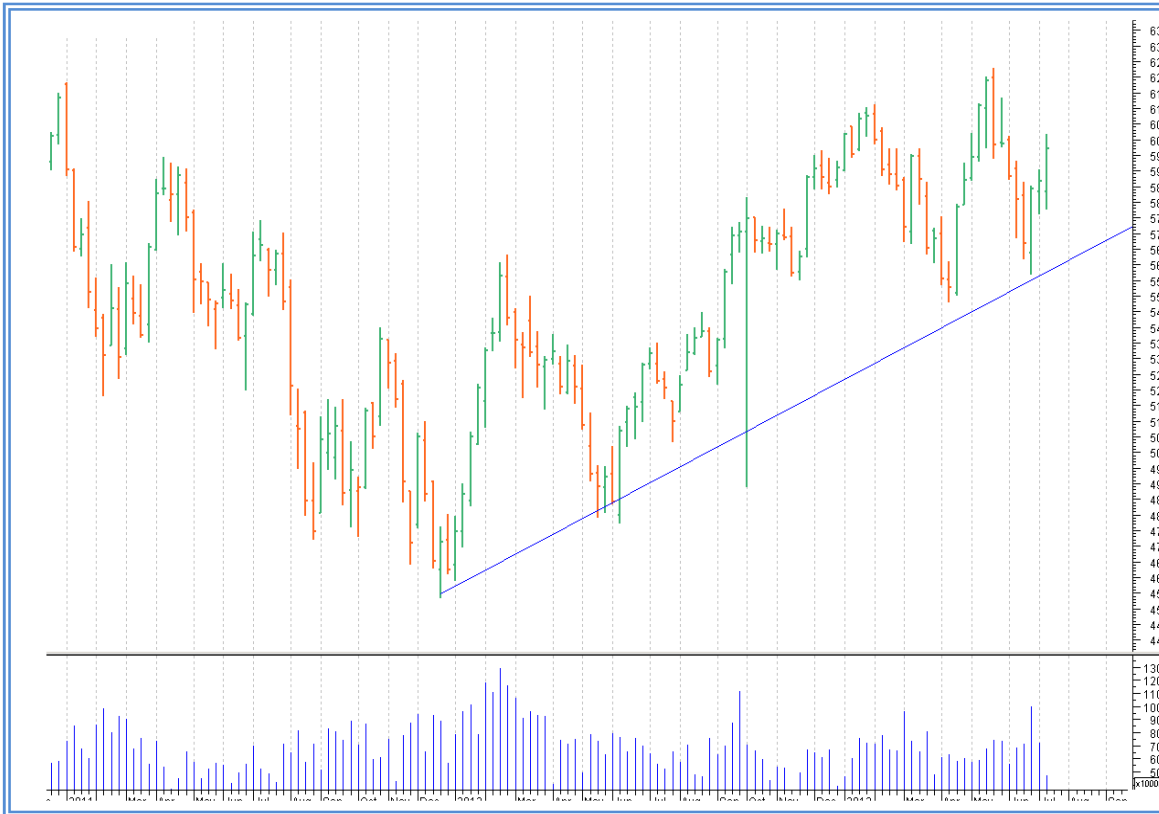
## Top Gainers Weekly

Scrip	Price	% Chg
GODREJCP	955	17.32
HUL	686	15.38
TCS	1741	15.10
ABIRLANUVO	1164	13.93
INFY	2845	13.79

## Top Losers Weekly

Scrip	Price	% Chg
GITANJALI	109	30.08
MMTC	53	22.64
ASHOKLEY	15	17.12
FINANTECH	631	15.83
PRESTIGE	131	13.79

## Nifty Corner



<b>Support &amp; Resistance</b>						
<b>S3</b>	<b>S2</b>	<b>S1</b>	<b>Nifty</b>	<b>R1</b>	<b>R2</b>	<b>R3</b>
5800	5850	5950	6029	6100	6150	6200
<b>Moving Averages</b>						
<b>20DMA</b>		<b>50DMA</b>		<b>100DMA</b>		<b>200DMA</b>
5765		5725		5845		5835

## Market Commentary

Markets traded choppy throughout the week and Indices closed with flattish note. FMCG were the highest gainers in the trade throughout the week and closed with 7% gains and Banking sector were the worst hit during the week which closed with 6% down. For this week Nifty likely to trade in the range between 6150 – 6200 in the upper side and 5850 – 5800 in the lower side.

Stocks at 52 wk High

Scrip	Cmp
AJANTPHARMA	1141
ASIANPAINTS	5165
BAYERCROP	1731
ESCORTS	88
NESTLEIND	5702

Stocks at 52 wk Low

Scrip	Cmp
BGREENERGY	119
CAREERP	83
DISHTV	57
GITANJALI	108
HPCL	226

FII Activity

Date	Figures in crore
15/07	-227.25
16/07	-357.40
17/07	-26.09
18/07	-178.29
19/07	252.26
Net	-536.77

DII Activity

Date	Figures in crore
15/07	454.28
16/07	-210.55
17/07	-73.86
18/07	-239.41
19/07	-229.1
Net	-298.64

Weekly Stock Idea

Scrip	B/S	Cmp	Tgt
BPCL	B	346	360
NMDC	B	107	114
BHEL	S	174	160
LICHSGFIN	S	208	185
CENTURYTEX	B	242	254

Buy on dips & Sell on rise with Stop-loss of 3%

Volume Breakout Stocks

Scrip	Cmp
BAJAJCORP	244
NAUKRI	317
BHEL	174
ABIRLANUVO	1161
UCOBANK	69

Week Ahead**RESULTS THIS WEEK:**

**22 JULY:** MRPL, PEL, JUSTDIAL, ASIANPAINTS, LT, INGVYSYABK.

**23 JULY:** L&TFH, INDIAINFO, CENTURYTEXT, TATASPONGE, TATAELXSI.

**24 JULY:** DABUR, YESBANK, UNIPHOS, HEROMOTOCO, IBREALEST, CENTRALBK, CAIRN, AMBUJACEM.

**25 JULY:** ZEEL, STER, MARUTI, ITC, IOB, GAIL, ACC, BIOCON, BATAINDIA.

**26 JULY:** WIPRO, MCLEODRUSS, PNB, TATACOM, HINDUNILVR, JSWENERGY, DISHTV, BANKINDIA.

**VISIT US AT: [WWW.INDIRATRADE.COM](http://WWW.INDIRATRADE.COM)**

**Disclaimer**

This report is for private circulation within the Indira Group. This report is strictly confidential and for information of the selected recipient only and may not be altered in any way, transmitted to, copied or distributed, in part or in whole, to any other person or to the media or reproduced in any form. This report should not be construed as an offer or solicitation to buy or sell any securities or any interest in securities. It does not constitute a personal recommendation or take into account the particular investment objectives, financial situations, or any such factor. The information, opinions estimates and forecasts contained here have been obtained from, or are based upon, sources we believe to be reliable, but no representation of warranty, express or implied, is made by us to their accuracy or completeness. Opinions expressed are our current opinions as of the date appearing on this material only and are subject to change without notice.