

WEEKLY REPORT

Keep an Eye on Changing Market Place.....

05, JAN 2013

Top Stories This Week

- ≈ ONGC pays interim dividend of Rs 2,961 crore to govt for FY13.
- ≈ Bajaj Hindusthan quits Rs 10,000 crore 1980MW UP Power project.
- ≈ Hindustan Dorr-Oliver bags 2 orders worth Rs 277 crore from GSFC.
- ≈ Deepak Fertilisers' workers at Maharashtra plant on strike from January 3rd over disciplinary action and wage issues.
- ≈ Oil Ministry -Announces steps for better gas usage by power plants, -Notifies steps to divert gas among power plants of 1 company, -Notifies steps to club gas among power plants of 1 company, -Flexibility in gas utilisation to enhance power generation, -Clubbing/diversion should not be for more than a year, -Power plants need NOC from Discoms for diverting gas.
- ≈ Inter-ministerial group (IMG) to study TRAI recommendations on government's entry into TV Broadcast.
- ≈ L&T IDPL, GammonInfra , IL&FS Transportation , GMR Infra in race for Rs 21,147 crore Mumbai rail corridor project.

Weekly Indices Change

| Index | Close | P. Close | Chg. (%) |
|---------|-------|----------|----------|
| SENSEX | 19784 | 19444 | 1.75 |
| NIFTY | 6016 | 5908 | 1.83 |
| MIDCAP | 7314 | 7092 | 3.13 |
| SMLCAP | 7615 | 7342 | 3.72 |
| METAL | 11289 | 11041 | 2.25 |
| OIL&GAS | 8856 | 8510 | 4.07 |
| AUTO | 11590 | 11378 | 1.86 |
| TECK | 3514 | 3429 | 2.48 |
| BANKEKX | 14695 | 14330 | 2.55 |
| IT | 5798 | 5686 | 1.97 |
| FMCG | 5884 | 5932 | (0.81) |
| HC | 8205 | 8127 | 0.96 |
| PSU | 7598 | 7291 | 4.21 |
| CD | 7924 | 7657 | 3.49 |
| POWER | 2032 | 1981 | 2.57 |
| CG | 11096 | 10904 | 1.76 |
| REALTY | 2198 | 2089 | 5.22 |

Global Indices

| | | | |
|----------|-------|-------|------|
| DOW | 13435 | 12938 | 3.84 |
| NASDAQ | 3101 | 2960 | 4.76 |
| FTSE | 6089 | 5925 | 2.77 |
| NIKKEI | 10688 | 10395 | 2.82 |
| HANGSENG | 23331 | 22666 | 2.93 |

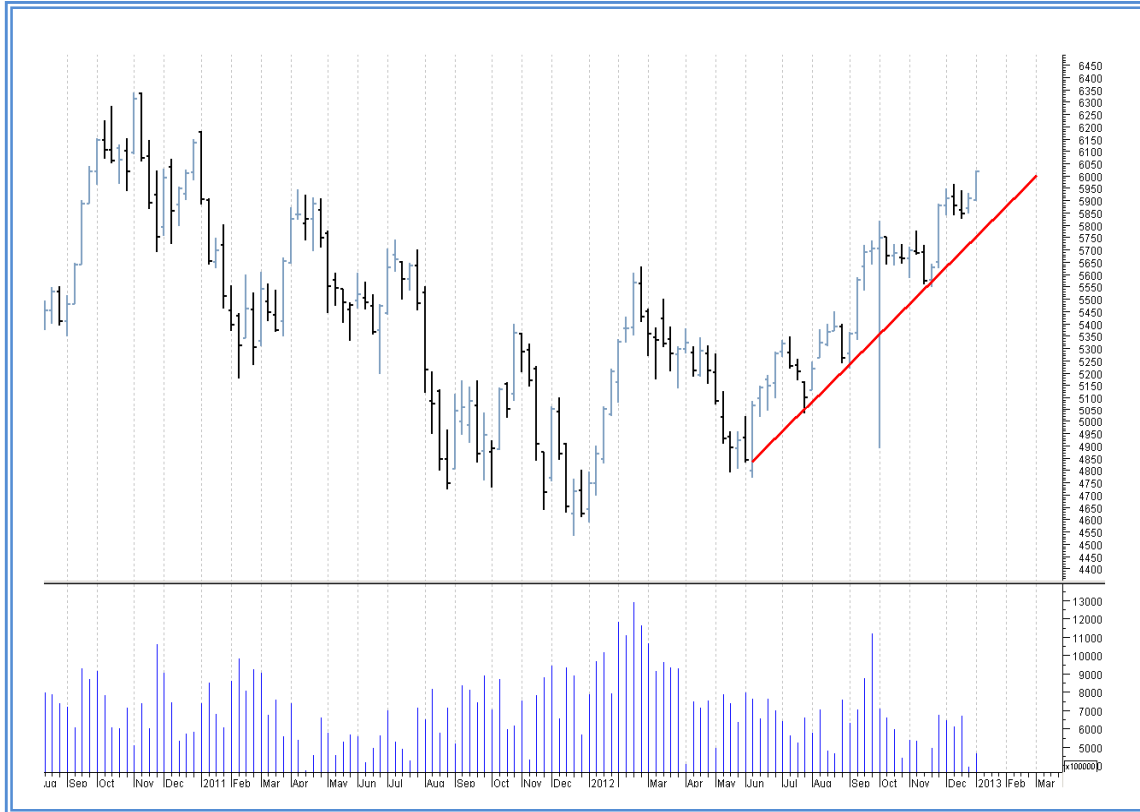
Top Gainers Weekly

| Scrip | Price | % Chg |
|------------|-------|-------|
| INDIABULLS | 311 | 15.75 |
| IFCI | 38 | 15.26 |
| GTANJALI | 585 | 14.57 |
| MUTHOOFFIN | 226 | 12.63 |
| INDIANB | 215 | 10.57 |

Top Losers Weekly

| Scrip | Price | % Chg |
|-----------|-------|-------|
| SUZLON | 18.40 | 4.66 |
| MCX | 1418 | 4.40 |
| MADRASCEM | 239 | 3.85 |
| IPCALAB | 507 | 2.83 |
| EMAMILTD | 584 | 2.62 |

Nifty Corner



| Support & Resistance | | | | | | |
|---------------------------------|--------------|---------------|---------------|-----------|-----------|-----------|
| S3 | S2 | S1 | Nifty | R1 | R2 | R3 |
| 5800 | 5900 | 5950 | 6016 | 6050 | 6100 | 6150 |
| Moving Averages | | | | | | |
| 20DMA | 50DMA | 100DMA | 200DMA | | | |
| 5627 | 5365 | 5320 | 5140 | | | |

Market Commentary

Key benchmark indices surged to attain their highest level in nearly two years after a survey showed strong growth in both the services and manufacturing sectors in December 2012. The market sentiment was also boosted after US lawmakers reaching a last-minute deal to avert the so-called fiscal cliff. The 50-unit S&P CNX Nifty moved past the psychological 6,000 mark. The market gained in four out of five trading sessions in the week just gone by. For the next week Nifty likely to trade in the range between 6100 - 6150 in the upper side and 5900 - 5800 in the lower side.

Stocks at 52 wk High

| Scrip | Cmp |
|-------------|-----|
| DENABANK | 127 |
| ESSAROIL | 72 |
| GICHSGFIN | 141 |
| CENTURYTEXT | 448 |
| NBCC | 185 |

Stocks at 52 wk Low

| Scrip | Cmp |
|-------|-----|
| -- | -- |
| -- | -- |
| -- | -- |
| -- | -- |
| -- | -- |

FII Activity

| Date | Figures in crore |
|-------|------------------|
| 31-12 | 826.34 |
| 01-01 | 665.05 |
| 02-01 | 1107.66 |
| 03-01 | 1397.37 |
| 04-01 | 1164.41 |
| NET | 5160.83 |

DII Activity

| Date | Figures in crore |
|-------|------------------|
| 31-12 | -200.97 |
| 01-01 | -406.14 |
| 02-01 | -417.41 |
| 03-01 | -905.96 |
| 04-01 | -825.40 |
| NET | -2755.88 |

Weekly Stock Idea

| Scrip | B/S | Cmp | Tgt |
|-----------|-----|------|-----|
| HINDPETRO | B | 313 | 325 |
| TREEHOUSE | B | 285 | 315 |
| EIHOTEL | B | 73 | 79 |
| MAHABANK | B | 62.7 | 67 |
| SREINFRA | B | 49.7 | 54 |

Buy on dips & Sell on rise with Stop-loss of 3%

Volume Breakout Stocks

| Scrip | Cmp |
|-----------|-----|
| IFCI | 38 |
| TREEHOUSE | 285 |
| MINDTREE | 698 |
| IOC | 281 |
| ABB | 725 |

Week Ahead

MAJOR RESULTS THIS WEEK:

08 JAN: RSSOFTWARE.

09 JAN: GUJNRECOKE, INDUSINDBANK.

10 JAN: SINTEX.

11 JAN: INFY, CMC.

VISIT US AT: WWW.INDIRATRADE.COM

Disclaimer

This report is for private circulation within the Indira Group. This report is strictly confidential and for information of the selected recipient only and may not be altered in any way, transmitted to, copied or distributed, in part or in whole, to any other person or to the media or reproduced in any form. This report should not be construed as an offer or solicitation to buy or sell any securities or any interest in securities. It does not constitute a personal recommendation or take into account the particular investment objectives, financial situations, or any such factor. The information, opinions estimates and forecasts contained here have been obtained from, or are based upon, sources we believe to be reliable, but no representation of warranty, express or implied, is made by us to their accuracy or completeness. Opinions expressed are our current opinions as of the date appearing on this material only and are subject to change without notice.