

WEEKLY REPORT

Keep an Eye on Changing Market Place.....

15, DEC 2012

Top Stories This Week

- ≈ Fresh round of reforms; Cabinet clears: -Land acquisition bill, - Committee on investment (new avatar of NIB), -Urea investment policy, -Finalises spectrum policy, - Cabinet okays amendments to judicial accountability bill.
- ≈ Coromandel International to acquire Liberty Phosphates.
- ≈ Titan Europe makes open offer for 14.38 percent of Wheels India stake at Rs 725.38/share.
- ≈ Oil marketing companies to float Rs 3500 crore global tender for ethanol.
- ≈ Government extends deadline for sale of October-November sugar quota till December 31.
- ≈ SFIO asked to probe fraud by 83 companies: PTI (Companies include Ambuja Cements, ACC, Ultra Tech and Sesa Goa).
- ≈ Power companies to cut rates after Calcutta HC ruled that regulators cannot fix provisional tariffs.
- ≈ Moody's -Revises PNB 's, Bank of Baroda and Canara Bank outlook to negative from stable, - Outlook revision on increased risk posed by asset quality.

Weekly Indices Change

Index	Close	P. Close	Chg. (%)
SENSEX	19317	19424	(0.55)
NIFTY	5879	5907	(0.47)
MIDCAP	6999	7070	(1.00)
SMLCAP	7353	7445	(1.24)
METAL	10569	10569	0.00
OIL&GAS	8443	8510	(0.79)
AUTO	11162	10936	2.07
TECK	3364	3410	(1.35)
BANKEKX	14264	14183	0.57
IT	5590	5644	(0.96)
FMCG	5975	6066	(1.50)
HC	7982	7971	0.14
PSU	7157	7280	(1.69)
CD	7765	8144	(4.65)
POWER	1954	2019	(3.22)
CG	10948	11239	(2.59)
REALTY	2067	2101	(1.62)

Global Indices

DOW	13135	13155	(0.15)
NASDAQ	2971	2978	(0.24)
FTSE	5921	5914	0.12
NIKKEI	9737	9527	2.20
HANGSENG	22605	22191	1.87

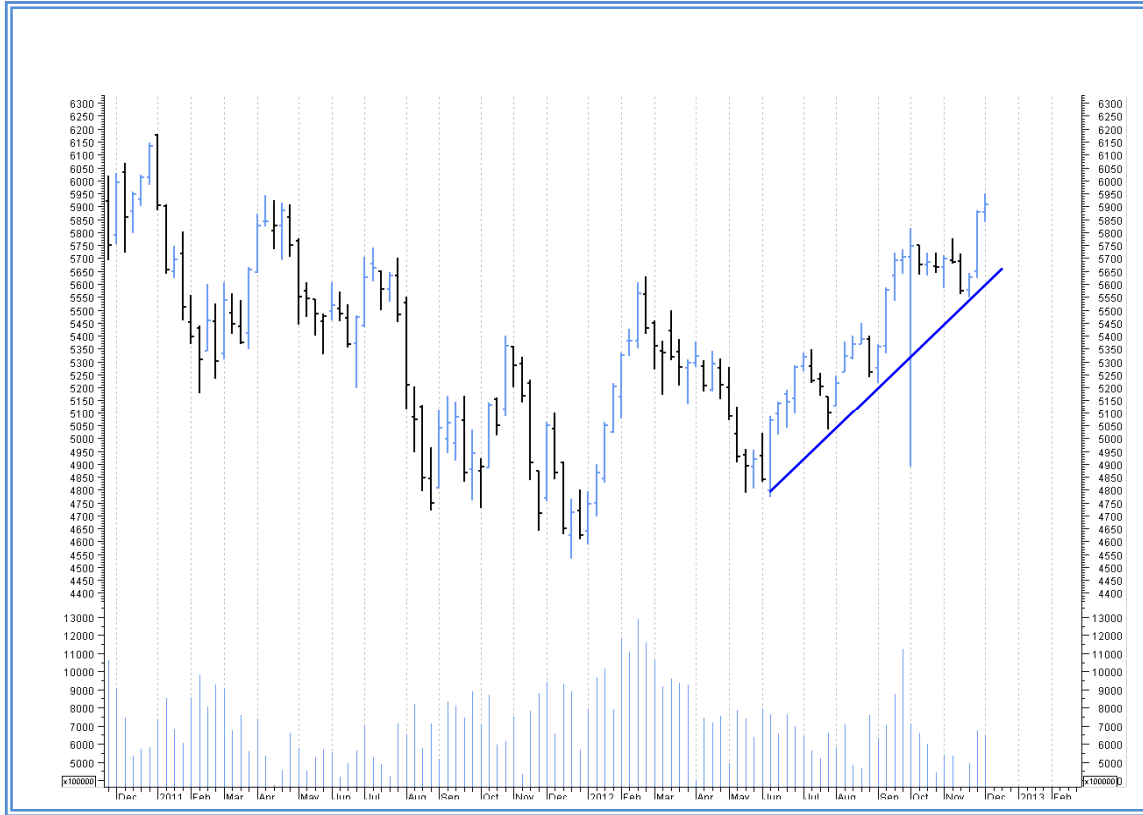
Top Gainers Weekly

Scrip	Price	% Chg
JETAIRWAYS	609	14.99
OFSS	3176	11.18
M&MFINSRV	1083	8.50
SATYAMCOMP	105	7.48
TECHM	945	7.30

Top Losers Weekly

Scrip	Price	% Chg
GITANJALI	472	9.31
HEXAWARE	89	7.82
JPOWER	42	7.80
LITL	13	7.77
BHEL	225	7.41

Nifty Corner



Support & Resistance						
S3	S2	S1	Nifty	R1	R2	R3
5700	5750	5800	5879	5950	6050	6100
Moving Averages						
20DMA	50DMA	100DMA	200DMA			
5679	5677	5485	5335			

Market Commentary

Key benchmark indices logged small declines in the week ended Friday, 14 December 2012 on worries of US fiscal cliff. The market advanced on last trading session of the week after latest data showed inflation based on the wholesale price index (WPI) eased in November 2012, with core inflation reaching 2-1/2-year low. The Sensex declined in four out of five trading sessions in the week just gone by. The BSE Mid-Cap and Small-Cap indices shed over 1% each. For the next week Nifty likely to trade in the range between 5960 - 6100 in the upper side and 5800 - 5700 in the lower side.

Stocks at 52 wk High

Scrip	Cmp
ADFFOODS	72
BAJAJAUTO	2081
GLENMARK	475
JETAIRWAYS	608
MAHSCOOTER	528

Stocks at 52 wk Low

Scrip	Cmp
ALOKTEXT	10.5
AMTEKAUTO	70
EIHOTEL	71
GLODYNE	25
GTINFRA	5.6

FII Activity

Date	Figures in crore
10-12	698.23
11-12	1309.88
12-12	952.75
13-12	1256.57
14-12	574.38
NET	4791.81

DII Activity

Date	Figures in crore
10-12	-586.58
11-12	-1028.34
12-12	-365.07
13-12	-665.67
14-12	-512.43
NET	-3158.09

Weekly Stock Idea

Scrip	B/S	Cmp	Tgt
TATASTEEL	B	397	415
HEXAWARE	B	89	95
HINDALCO	B	119	125
JINDALSTEEL	B	431	445
HINDZINC	B	142	147

Buy on dips & Sell on rise with Stop-loss of 3%

Volume Breakout Stocks

Scrip	Cmp
WHEELS	893
FACT	32
HONAUT	2391
KOLTEPATIL	103
TECHNO	195

Week Ahead

MAJOR BOARD THIS WEEK:

21 DEC: ONGC: BOARD MEETING FOR INTERM DIVIDEND.

VISIT US AT: WWW.INDIRATRADE.COM

Disclaimer

This report is for private circulation within the Indira Group. This report is strictly confidential and for information of the selected recipient only and may not be altered in any way, transmitted to, copied or distributed, in part or in whole, to any other person or to the media or reproduced in any form. This report should not be construed as an offer or solicitation to buy or sell any securities or any interest in securities. It does not constitute a personal recommendation or take into account the particular investment objectives, financial situations, or any such factor. The information, opinions estimates and forecasts contained here have been obtained from, or are based upon, sources we believe to be reliable, but no representation of warranty, express or implied, is made by us to their accuracy or completeness. Opinions expressed are our current opinions as of the date appearing on this material only and are subject to change without notice.